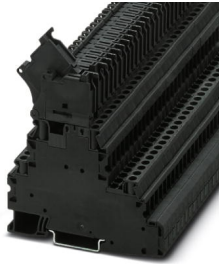


Fuse terminal block - UT 4-L/HESI (5X20)-DIO/U-OL - 1013133

<https://www.phoenixcontact.com/in/products/1013133>

Please be informed that the data shown in this PDF document is generated from our Online Catalog. Please find the complete data in the user documentation. Our General Terms of Use for Downloads are valid.



Fuse modular terminal block, with diode1N4007, fuse type: Glass / ceramics / ..., connection method: Screw connection, cross section: 0.14 mm²- 6 mm², AWG: 26 - 10, nominal current: 28 A, nom. voltage: 500 V, width: 6.2 mm, fuse type: G / 5 x 20, mounting type: NS 35/7,5, NS 35/15, color: black

Fuse terminal block - UT 4-L/HESI (5X20)-DIO/U-OL - 1013133



<https://www.phoenixcontact.com/in/products/1013133>

Commercial Data

Order Key	1013133
Packing unit	50 pc
Minimum order quantity	50 pc
Sales Key	BE1
GTIN	4055626491165
Weight per Piece (including packing)	32.9 GRM
Weight per Piece (excluding packing)	32.9 GRM
Customs tariff number	85369095

Fuse terminal block - UT 4-L/HESI (5X20)-DIO/U-OL - 1013133

<https://www.phoenixcontact.com/in/products/1013133>

Technical Data

Environmental and real-life conditions

Ambient temperature (operation)	-60 °C ... 105 °C (max. short-term operating temperature 130°C)
Ambient temperature (storage/transport)	-25 °C ... 60 °C (for a short time, not exceeding 24 h, -60 °C to +70 °C)
Ambient temperature (assembly)	-5 °C ... 70 °C
Ambient temperature (actuation)	-5 °C ... 70 °C
Permissible humidity (storage/transport)	30 % ... 70 %

Notes

General	The current is determined by the fuse used, the voltage by the selected LED. If the fuse is faulty, the downstream circuit will not be disconnected.
---------	---

Environmental Product Compliance

REACH SVHC	Lead 7439-92-1
China RoHS	Environmentally Friendly Use Period = 50 years
China RoHS	For details about hazardous substances go to tab "Downloads", Category "Manufacturer's declaration"

Electrical properties

Fuse type	Glass / ceramics / ...
Rated surge voltage	6 kV
Maximum power dissipation for nominal condition	1.6 W (the value is multiplied when connecting multiple levels)
Fuse	G / 5 x 20
Maximum power dissipation	max. 1.6 W (with single arrangement of the fuse terminal block in the event of overload)
Maximum power dissipation	max. 1.6 W (With interconnected arrangement of several fuse terminal blocks in the event of overload)
Maximum power dissipation	max. 4 W (with single arrangement of the fuse terminal block in the event of a short-circuit)
Maximum power dissipation	max. 2.5 W (With interconnected arrangement of several fuse terminal blocks in the event of a short-circuit)

Mechanical properties

Mechanical data

Open side panel	No
-----------------	----

Dimensions

Width	6.2 mm
Height	94.5 mm
Height NS 35/15	96.4 mm
Height NS 35/7,5	88.9 mm
Length	92.7 mm

Fuse terminal block - UT 4-L/HESI (5X20)-DIO/U-OL - 1013133

<https://www.phoenixcontact.com/in/products/1013133>

Material specifications

Color	black
Flammability rating according to UL 94	V0
Insulating material group	I
Insulating material	PA

Mounting

Mounting type	NS 35/7,5
Mounting type	NS 35/15

Connection data

Grounding foot	No
Number of connections per level	2
Nominal cross section	4 mm ²

Level 1

Designation	Level 1
Screw thread	M3
Tightening torque	0.6 ... 0.8 Nm
Stripping length	9 mm
Internal cylindrical gage	A4
Connection in acc. with standard	IEC 60947-7-1 / IEC 60947-7-3
Conductor cross section solid	0.14 mm ² ... 6 mm ²
Cross section AWG	26 ... 10
Conductor cross section flexible	0.14 mm ² ... 6 mm ²
Conductor cross section, flexible [AWG]	26 ... 10
Flexible conductor cross section flexible (ferrule, w/o plastic sleeve)	0.14 mm ² ... 4 mm ²
Flexible conductor cross section (ferrule with plastic sleeve)	0.14 mm ² ... 4 mm ²
2 conductors with same cross section, solid	0.14 mm ² ... 1.5 mm ²
2 conductors with same cross section, flexible	0.14 mm ² ... 1.5 mm ²
2 conductors with same cross section, flexible, with ferrule without plastic sleeve	0.14 mm ² ... 1.5 mm ²
2 conductors with the same cross section, flexible, with TWIN ferrule with plastic sleeve	0.5 mm ² ... 1.5 mm ²
Nominal current	28 A (with 4 mm ² conductor cross section)
Maximum load current	36 A (with 6 mm ² conductor cross section)
Nominal voltage	500 V
Nominal cross section	4 mm ²

Level 2

Designation	Level 2
Screw thread	M3
Tightening torque	0.6 ... 0.8 Nm
Stripping length	9 mm

Fuse terminal block - UT 4-L/HESI (5X20)-DIO/U-OL - 1013133



<https://www.phoenixcontact.com/in/products/1013133>

Connection in acc. with standard	IEC 60947-7-1 / IEC 60947-7-3
Conductor cross section solid	0.14 mm ² ... 6 mm ²
Cross section AWG	26 ... 10
Conductor cross section flexible	0.14 mm ² ... 6 mm ²
Conductor cross section, flexible [AWG]	26 ... 10
Flexible conductor cross section flexible (ferrule, w/o plastic sleeve)	0.14 mm ² ... 4 mm ²
Flexible conductor cross section (ferrule with plastic sleeve)	0.14 mm ² ... 4 mm ²
2 conductors with same cross section, solid	0.14 mm ² ... 1.5 mm ²
2 conductors with same cross section, flexible	0.14 mm ² ... 1.5 mm ²
2 conductors with same cross section, flexible, with ferrule without plastic sleeve	0.14 mm ² ... 1.5 mm ²
2 conductors with the same cross section, flexible, with TWIN ferrule with plastic sleeve	0.5 mm ² ... 1.5 mm ²
Nominal current	6.3 A
Maximum load current	6.3 A (the current is determined by the fuse used)
Nominal voltage	500 V (the voltage is determined by the fuse used)
Nominal cross section	1 mm ²

Standards and regulations

Connection in acc. with standard	IEC 60947-7-1 / IEC 60947-7-3
Connection in acc. with standard	IEC 60947-7-1 / IEC 60947-7-3

Product properties

Number of connections	4
Number of levels	2
Potentials	2

Insulation characteristics

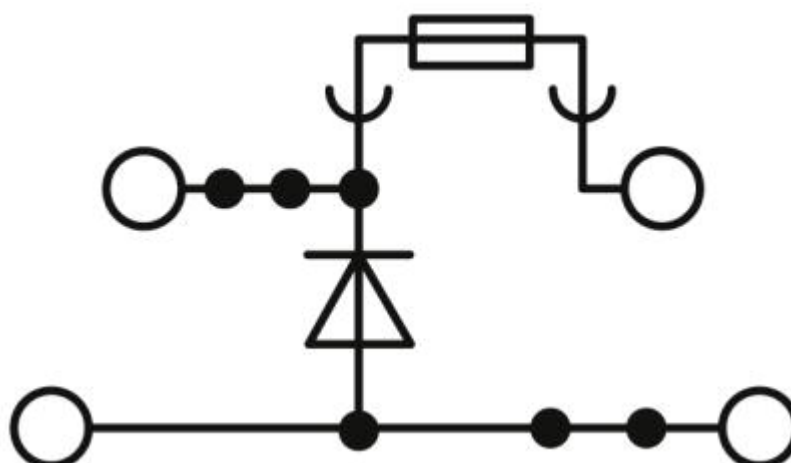
Overvoltage category	III
Degree of pollution	3

Fuse terminal block - UT 4-L/HESI (5X20)-DIO/U-OL - 1013133

<https://www.phoenixcontact.com/in/products/1013133>

Drawings

Circuit diagram



Fuse terminal block - UT 4-L/HESI (5X20)-DIO/U-OL - 1013133



<https://www.phoenixcontact.com/in/products/1013133>

Approvals

EAC

EAC

UL Recognized

Usegroup	B	B1	C	C1
Nominal voltage U_N	300 V	300 V	300 V	300 V
Nominal current I_N	20 A	16 A	20 A	16 A
AWG/kcmil	26 mm ²	26 mm ²	26 mm ²	26 mm ²
Min. cross section	10 mm ²	10 mm ²	10 mm ²	10 mm ²
Max. cross section				

cUL Recognized

Usegroup	B	B1	C	C1
Nominal voltage U_N	300 V	300 V	300 V	300 V
Nominal current I_N	20 A	16 A	20 A	16 A
AWG/kcmil	26 mm ²	26 mm ²	26 mm ²	26 mm ²
Min. cross section	10 mm ²	10 mm ²	10 mm ²	10 mm ²
Max. cross section				

Fuse terminal block - UT 4-L/HESI (5X20)-DIO/U-OL - 1013133

<https://www.phoenixcontact.com/in/products/1013133>

Accessories

DIN rail

DIN rail - NS 35/15-2,3 UNPERF 2000MM - 1201798



DIN rail, unperforated, Standard profile 2.3 mm, width: 35 mm, height: 15 mm, acc. to EN 60715, material: Steel, galvanized, passivated with a thick layer, length: 2000 mm, color: silver

DIN rail

DIN rail - NS 35/15 AL UNPERF 2000MM - 1201756



DIN rail, unperforated, Standard profile, width: 35 mm, height: 15 mm, similar to EN 60715, material: Aluminum, uncoated, length: 2000 mm, color: silver

DIN rail

DIN rail - NS 35/15 CAP - 1206573

Fuse terminal block - UT 4-L/HESI (5X20)-DIO/U-OL - 1013133

<https://www.phoenixcontact.com/in/products/1013133>

DIN rail end piece, for DIN rail NS 35/15



DIN rail

DIN rail - NS 35/15 CU UNPERF 2000MM - 1201895



DIN rail, unperforated, Standard profile, width: 35 mm, height: 15 mm, similar to EN 60715, material: Copper, uncoated, length: 2000 mm, color: copper-colored

DIN rail

DIN rail - NS 35/15 PERF 2000MM - 1201730



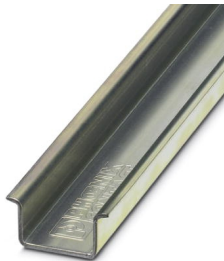
DIN rail perforated, Standard profile, width: 35 mm, height: 15 mm, similar to EN 60715, material: Steel, galvanized, passivated with a thick layer, length: 2000 mm, color: silver

DIN rail

Fuse terminal block - UT 4-L/HESI (5X20)-DIO/U-OL - 1013133

<https://www.phoenixcontact.com/in/products/1013133>

DIN rail - NS 35/15 UNPERF 2000MM - 1201714



DIN rail, unperforated, Standard profile, width: 35 mm, height: 15 mm, similar to EN 60715, material: Steel, galvanized, passivated with a thick layer, length: 2000 mm, color: silver

DIN rail

DIN rail - NS 35/15 WH PERF 2000MM - 0806602



DIN rail perforated, Standard profile, width: 35 mm, height: 15 mm, similar to EN 60715, material: Steel, Galvanized, white passivated, length: 2000 mm, color: silver

DIN rail

DIN rail - NS 35/15 WH UNPERF 2000MM - 1204135



DIN rail, unperforated, Standard profile, width: 35 mm, height: 15 mm, similar to EN 60715, material: Steel, Galvanized, white passivated, length: 2000 mm, color: silver

Fuse terminal block - UT 4-L/HESI (5X20)-DIO/U-OL - 1013133

<https://www.phoenixcontact.com/in/products/1013133>

DIN rail

DIN rail - NS 35/15 ZN PERF 2000MM - 1206599



DIN rail perforated, Standard profile, width: 35 mm, height: 15 mm, similar to EN 60715, material: Steel, galvanized, length: 2000 mm, color: silver

DIN rail

DIN rail - NS 35/15 ZN UNPERF 2000MM - 1206586



DIN rail, unperforated, Standard profile, width: 35 mm, height: 15 mm, similar to EN 60715, material: Steel, galvanized, length: 2000 mm, color: silver

DIN rail

DIN rail - NS 35/ 7,5 AL UNPERF 2000MM - 0801704



DIN rail, unperforated, Standard profile, width: 35 mm, height: 7.5 mm, acc. to EN 60715, material: Aluminum, uncoated, length: 2000 mm, color: silver

Fuse terminal block - UT 4-L/HESI (5X20)-DIO/U-OL - 1013133

<https://www.phoenixcontact.com/in/products/1013133>

DIN rail

DIN rail - NS 35/ 7,5 CAP - 1206560

DIN rail end piece, for DIN rail NS 35/7.5



DIN rail

DIN rail - NS 35/ 7,5 CU UNPERF 2000MM - 0801762



DIN rail, unperforated, Standard profile, width: 35 mm, height: 7.5 mm, acc. to EN 60715, material: Copper, uncoated, length: 2000 mm, color: copper-colored

DIN rail

DIN rail - NS 35/ 7,5 PERF 2000MM - 0801733



DIN rail perforated, Standard profile, width: 35 mm, height: 7.5 mm, acc. to EN 60715, material: Steel, galvanized, passivated with a thick layer, length: 2000 mm, color: silver

Fuse terminal block - UT 4-L/HESI (5X20)-DIO/U-OL - 1013133

<https://www.phoenixcontact.com/in/products/1013133>

DIN rail

DIN rail - NS 35/ 7,5 UNPERF 2000MM - 0801681



DIN rail, unperforated, Standard profile, width: 35 mm, height: 7.5 mm, acc. to EN 60715, material: Steel, galvanized, passivated with a thick layer, length: 2000 mm, color: silver

DIN rail

DIN rail - NS 35/ 7,5 WH PERF 2000MM - 1204119



DIN rail perforated, Standard profile, width: 35 mm, height: 7.5 mm, acc. to EN 60715, material: Steel, Galvanized, white passivated, length: 2000 mm, color: silver

DIN rail

DIN rail - NS 35/ 7,5 WH UNPERF 2000MM - 1204122



DIN rail, unperforated, Standard profile, width: 35 mm, height: 7.5 mm, acc. to EN 60715, material: Steel, Galvanized, white passivated, length: 2000 mm, color: silver

Fuse terminal block - UT 4-L/HESI (5X20)-DIO/U-OL - 1013133

<https://www.phoenixcontact.com/in/products/1013133>

DIN rail

DIN rail - NS 35/ 7,5 ZN PERF 2000MM - 1206421



DIN rail perforated, Standard profile, width: 35 mm, height: 7.5 mm, acc. to EN 60715, material: Steel, galvanized, length: 2000 mm, color: silver

DIN rail

DIN rail - NS 35/ 7,5 ZN UNPERF 2000MM - 1206434



DIN rail, unperforated, Standard profile, width: 35 mm, height: 7.5 mm, acc. to EN 60715, material: Steel, galvanized, length: 2000 mm, color: silver

Switching jumper

Switching jumper - DMET 5X20 - 3032075



Feed-through metal in the shape of a 5 x 20 mm glass tube fuse insert for use in fuse terminal blocks.

Fuse terminal block - UT 4-L/HESI (5X20)-DIO/U-OL - 1013133

<https://www.phoenixcontact.com/in/products/1013133>

Marker pen

Marker pen - X-PEN 0,35 - 0811228



Marker pen without ink cartridge, for manual labeling of markers, labeling extremely wipe-proof, line thickness 0.35 mm

Screwdriver tools

Screwdriver tools - SZS 0,6X3,5 - 1205053



Actuation tool, for ST terminal blocks, insulated, also suitable for use as a bladed screwdriver, size: 0.6 x 3.5 x 100 mm, 2-component grip, with non-slip grip

Labeled terminal marker

Labeled terminal marker - ZB 5,LGS:L1-N,PE - 1050415



Zack marker strip, Strip, white, labeled, horizontal: L1, L2, L3, N, PE, L1, L2, L3, N, PE, mounting type: snap into tall marker groove, for terminal block width: 5.2 mm, lettering field size: 5.15 x 10.5 mm, Number of individual labels: 10

Fuse terminal block - UT 4-L/HESI (5X20)-DIO/U-OL - 1013133

<https://www.phoenixcontact.com/in/products/1013133>

Labeled terminal marker

Labeled terminal marker - ZB 6,LGS:L1-N,PE - 1051414



Marker for terminal blocks, Strip, white, labeled, can be labeled with: CMS-P1-PLOTTER, horizontal: L1, L2, L3, N, PE, L1, L2, L3, N, PE, mounting type: snap into tall marker groove, for terminal block width: 6.2 mm, lettering field size: 6.15 x 10.5 mm, Number of individual labels: 10

Labeled terminal marker

Labeled terminal marker - ZB 6,LGS:U-N - 1051430



Marker for terminal blocks, Strip, white, labeled, can be labeled with: CMS-P1-PLOTTER, printed horizontally: U, V, W, N, GND, U, V, W, N, GND, mounting type: snap into tall marker groove, for terminal block width: 6.2 mm, lettering field size: 6.15 x 10.5 mm, Number of individual labels: 10

Terminal marking

Terminal marking - UC-TM 5 - 0818108



Marker for terminal blocks, Sheet, white, unlabeled, can be labeled with: BLUEMARK ID COLOR, BLUEMARK ID, BLUEMARK CLED, PLOTMARK, CMS-P1-PLOTTER, mounting type: snap into tall marker groove, for terminal block width: 5.2 mm, lettering field size: 10.5 x 4.6 mm, Number of individual labels: 96

Fuse terminal block - UT 4-L/HESI (5X20)-DIO/U-OL - 1013133

<https://www.phoenixcontact.com/in/products/1013133>

Terminal marking

Terminal marking - UC-TM 6 - 0818085



Marker for terminal blocks, Sheet, white, unlabeled, can be labeled with: BLUEMARK ID COLOR, BLUEMARK ID, BLUEMARK CLED, PLOTMARK, CMS-P1-PLOTTER, mounting type: snap into tall marker groove, for terminal block width: 6.2 mm, lettering field size: 5.6 x 10.5 mm, Number of individual labels: 80

Terminal marking

Terminal marking - UCT-TM 5 - 0828734



Marker for terminal blocks, Sheet, white, unlabeled, can be labeled with: TOPMARK NEO, TOPMARK LASER, BLUEMARK ID COLOR, BLUEMARK ID, BLUEMARK CLED, THERMOMARK PRIME, THERMOMARK CARD 2.0, THERMOMARK CARD, mounting type: snap into tall marker groove, for terminal block width: 5.2 mm, lettering field size: 4.6 x 10.5 mm, Number of individual labels: 72

Terminal marking

Terminal marking - UCT-TM 6 - 0828736



Marker for terminal blocks, Sheet, white, unlabeled, can be labeled with: TOPMARK NEO, TOPMARK LASER, BLUEMARK ID COLOR, BLUEMARK ID, BLUEMARK CLED, THERMOMARK PRIME, THERMOMARK CARD 2.0, THERMOMARK CARD, mounting type: snap into tall marker groove, for terminal block width: 6.2 mm, lettering field size: 5.6 x 10.5 mm, Number of individual labels: 60

Fuse terminal block - UT 4-L/HESI (5X20)-DIO/U-OL - 1013133

<https://www.phoenixcontact.com/in/products/1013133>

Terminal marking

Terminal marking - ZB 5 :UNBEDRUCKT - 1050004



Zack marker strip, Strip, white, unlabeled, can be labeled with: PLOTMARK, CMS-P1-PLOTTER, mounting type: snap into tall marker groove, for terminal block width: 5.2 mm, lettering field size: 5.1 x 10.5 mm, Number of individual labels: 10

Terminal marking

Terminal marking - ZB 6:UNBEDRUCKT - 1051003



Zack marker strip, Strip, white, unlabeled, can be labeled with: PLOTMARK, CMS-P1-PLOTTER, mounting type: snap into tall marker groove, for terminal block width: 6.2 mm, lettering field size: 6.15 x 10.5 mm, Number of individual labels: 10

Test socket

Test socket - PAI-4-FIX-5/6 BK - 3035980



4 mm test adapter, for terminal blocks with 5.2 mm and 6.2 mm pitch

Fuse terminal block - UT 4-L/HESI (5X20)-DIO/U-OL - 1013133

<https://www.phoenixcontact.com/in/products/1013133>

Test socket

Test socket - PAI-4-FIX-5/6 BN - 3035981



4 mm test adapter, for terminal blocks with 5.2 mm and 6.2 mm pitch

Test socket

Test socket - PAI-4-FIX-5/6 BU - 3035975



4 mm test adapter, for terminal blocks with 5.2 mm and 6.2 mm pitch

Test socket

Test socket - PAI-4-FIX-5/6 GN - 3035978



4 mm test adapter, for terminal blocks with 5.2 mm and 6.2 mm pitch

Fuse terminal block - UT 4-L/HESI (5X20)-DIO/U-OL - 1013133

<https://www.phoenixcontact.com/in/products/1013133>

Test socket

Test socket - PAI-4-FIX-5/6 GY - 3035982



4 mm test adapter, for terminal blocks with 5.2 mm and 6.2 mm pitch

Test socket

Test socket - PAI-4-FIX-5/6 OG - 3035974



4 mm test adapter, for terminal blocks with 5.2 mm and 6.2 mm pitch

Test socket

Test socket - PAI-4-FIX-5/6 RD - 3035976



4 mm test adapter, for terminal blocks with 5.2 mm and 6.2 mm pitch

Fuse terminal block - UT 4-L/HESI (5X20)-DIO/U-OL - 1013133

<https://www.phoenixcontact.com/in/products/1013133>

Test socket

Test socket - PAI-4-FIX-5/6 VT - 3035979



4 mm test adapter, for terminal blocks with 5.2 mm and 6.2 mm pitch

Test socket

Test socket - PAI-4-FIX-5/6 WH - 3035983



4 mm test adapter, for terminal blocks with 5.2 mm and 6.2 mm pitch

Test socket

Test socket - PAI-4-FIX-5/6 YE - 3035977



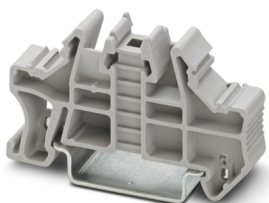
4 mm test adapter, for terminal blocks with 5.2 mm and 6.2 mm pitch

Fuse terminal block - UT 4-L/HESI (5X20)-DIO/U-OL - 1013133

<https://www.phoenixcontact.com/in/products/1013133>

End block

End block - CLIPFIX 35 - 3022218



Quick mounting end clamp for NS 35/7,5 DIN rail or NS 35/15 DIN rail, with marking option, width: 9.5 mm, color: gray

End block

End block - CLIPFIX 35-5 - 3022276



Quick mounting end clamp for NS 35/7,5 DIN rail or NS 35/15 DIN rail, with marking option, with parking option for FBS...5, FBS...6, KSS 5, KSS 6, width: 5.15 mm, color: gray

End block

End block - E/NS 35 N - 0800886



End clamp, width: 9.5 mm, color: gray

Fuse terminal block - UT 4-L/HESI (5X20)-DIO/U-OL - 1013133



<https://www.phoenixcontact.com/in/products/1013133>

Phoenix Contact 2020 © - all rights reserved
<https://www.phoenixcontact.com>

PHOENIX CONTACT (I) Pvt. Ltd.
A-58/2, Okhla Industrial Area, Phase - II, New Delhi-110 020

+91.11.30262800
info@phoenixcontact.co.in

Mouser Electronics

Authorized Distributor

Click to View Pricing, Inventory, Delivery & Lifecycle Information:

Phoenix Contact:

1013133