



## 75W LED Driver with 3 Channel Constant Current Outputs PDA075W LED Power Supply



### Features

- Class 2 Output per UL1310
- OVP and Short-Circuit Protection
- 3 Channel Output
- IP66
- THD <20% &  $\geq 0.9$  Power Factor
- Brownout Protection

### Applications

- Troffers

### Safety Approvals

- cUL/UL/ UL8750
- Class 2 Output per UL1310

### Mechanical Characteristics

- Length: 242mm (9.53in)
- Width: 43.5mm (1.71in)
- Height: 30.5mm (1.2in)
- Weight: 650g

### Output Specifications

#### Channel 1~3

Model	DC Output Voltage			Output Current	Output Power
	Min.	Typ.	Max.		
PDA075B-T700G	28V	31V	33V	700mA	25W

PhiHong is not responsible for any error, and reserves the right to make changes without notice. Please visit our website at [www.phihong.com](http://www.phihong.com) for the most up-to-date specifications and contact information.

**INPUT:****AC Input Voltage**

108~304VAC

**Nominal AC Input Voltage**

120~277VAC

**Maximum Input Current**

0.82A (RMS) at 108Vac, 60Hz

**Leakage Current**

0.75mA maximum at 277VAC

**AC Inrush Current**

&lt;100A at 277VAC, 60 Hz

**Power Factor** $\geq 0.9$ **THD**

&lt; 20%

**Ripple (Ch1~Ch3)**

240mA p-p

**Turn on/off Time**

3 seconds maximum at nominal AC input

0.5 seconds maximum at nominal AC input

**Efficiency**

81% at 120VAC

83% at 277VAC

Typical Efficiency 85%

**Environmental:****Temperature**

Operating 0 to Tc +70°C

Non-operation -40 to +85°C

Operating Humidity 10% to 95%

**EMC**

FCC 47 CFR Part 15, Class A

**Immunity**

IEC61000-4-2

IEC61000-4-5

IEC61000-4-11

**Dielectric Withstand (Hi-pot) Test**

Primary to secondary: 3000VAC for 1 minute, 10mA

**Insulation Resistance**

Primary to secondary: &gt;5M Ohm 500VDC, 1 Minute

**Short-Circuit Protection**

Auto-Recovery

**Open Circuit and Output Over-voltage Protection**

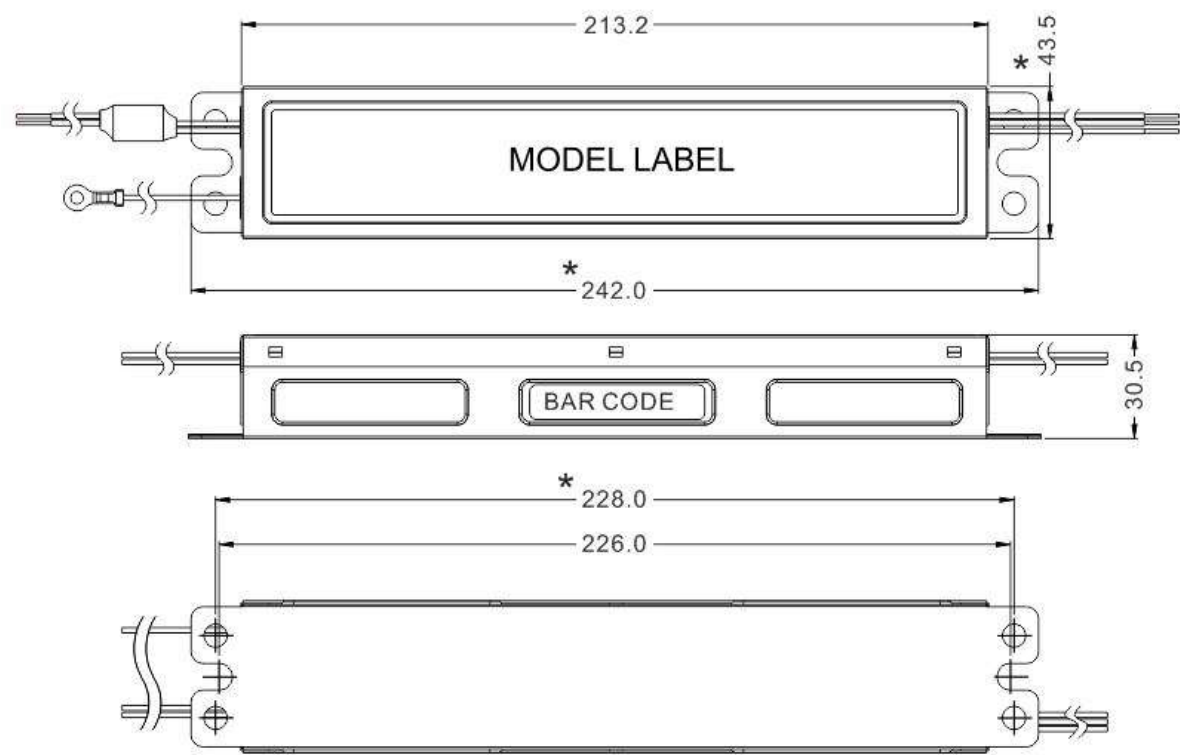
Max Voltage Limit 42V

**Input / Output Connections**

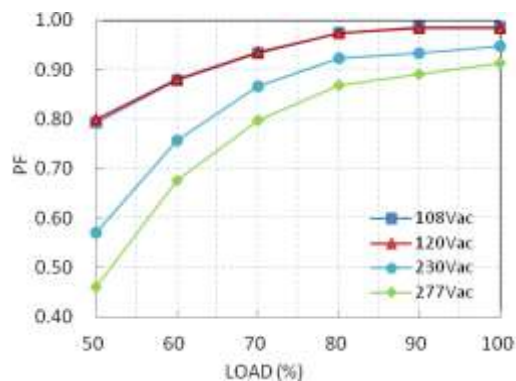
Position	Terminal Color	Specification	Length
Input	Black	AWG16 Solid Wire	660mm
	White	AWG16 Solid Wire	660mm
Output	Red(+)	AWG18 Solid Wire	250mm
	Blue(-)	AWG18 Solid Wire	250mm

**Warranty**

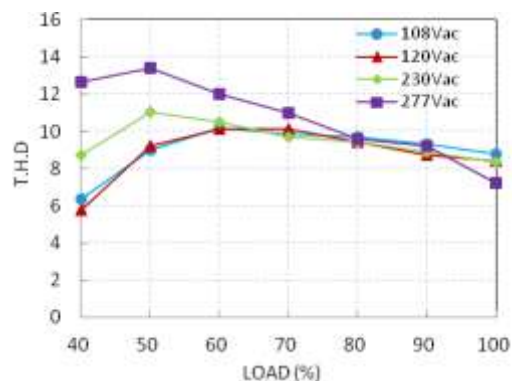
5 Years



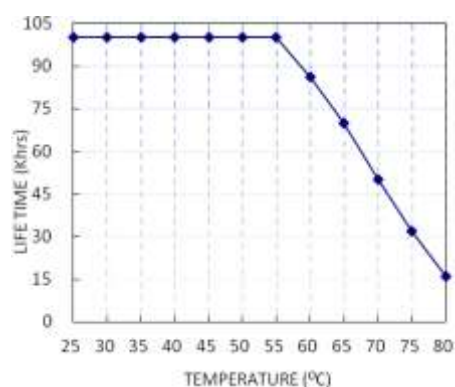
Power Factor vs. Load



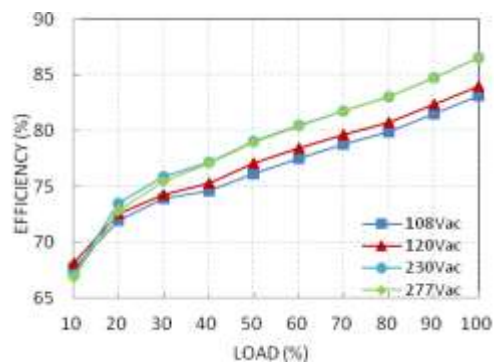
Total Harmonic Distortion vs. Load



Lifetime vs. Tc

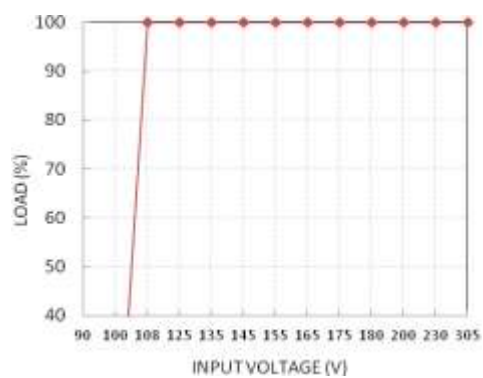


Efficiency vs. Load

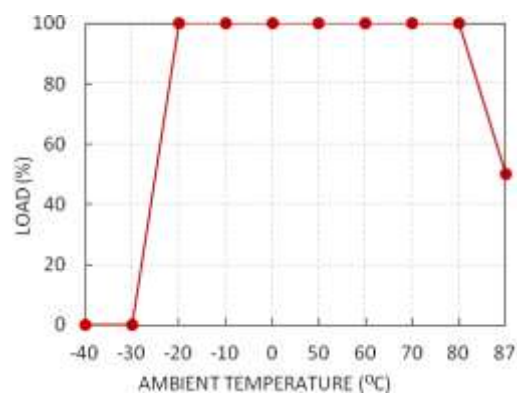


## Temperature Rating

Static Characteristic: Load vs. Input Voltage



Derating Curve: Load vs Ta



# Mouser Electronics

Authorized Distributor

Click to View Pricing, Inventory, Delivery & Lifecycle Information:

[Phihong:](#)

[PDA075B-T700G](#)