

Stepping Motors

M42SP-5

OUTLINE

"M42SP-5" has acquired the highest output torque among the outer diameter 42mm model series-holding torque : 78.4mN·m, pull-out torque : 27.6mN·m/200pps, and pull-in torque : 26.5mN·m/200pps (12V DC).

With superior running noiselessness and other features, this model motor is the most suited to future, compact electronic equipment.



FEATURES

1. High output torque.
2. Superior running quietness and stability.
3. Step angle : 7.5°.
4. Excellent responsiveness acquired.

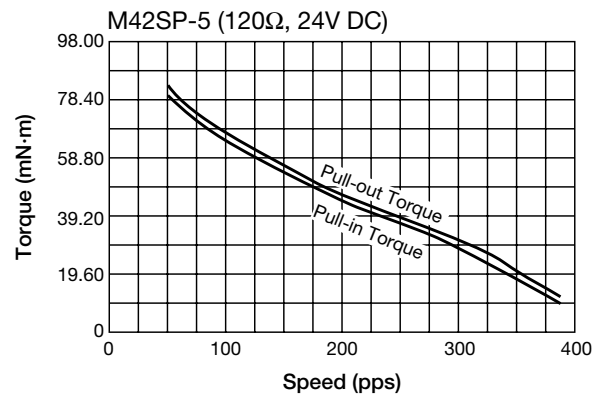
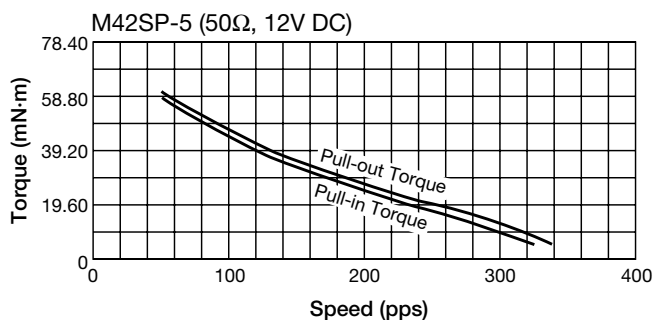
USES

Printers, typewriters, word processors, facsimiles, copy machines, and such.

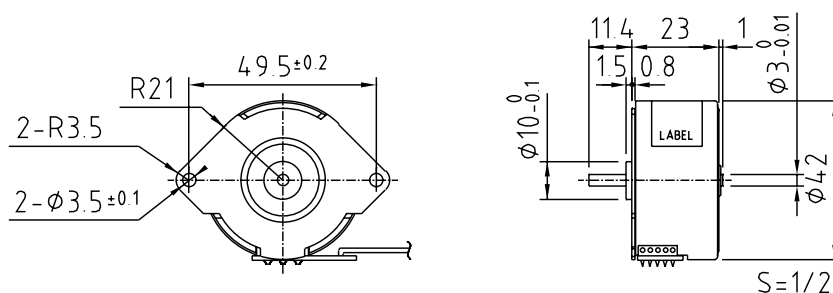
SPECIFICATIONS

Items	M42SP-5	
Rated Voltage	DC 12V	DC 24V
Working Voltage	DC 10.8~13.2V	DC 21.6~26.4V
Rated Current/Phase	259mA	216mA
No. of Phase	4 Phase	4 Phase
Coil DC Resistance	50Ω/phase±7%	120Ω/phase±7%
Step Angle	7.5°/step	7.5°/step
Excitation Method	2-2 Phase excitation (Unipolar driving)	
Insulation Class	Class E insulation	Class E insulation
Holding Torque	78.4mN·m	94.1mN·m
Pull-out Torque	27.6mN·m/200pps	46.1mN·m/200pps
Pull-in Torque	26.5mN·m/200pps	45.6mN·m/200pps
Max. Pull-out Pulse Rate	375pps	445pps
Max. Pull-in Pulse Rate	365pps	435pps

CHARACTERISTICS



DIMENSIONS



Unit : mm, General tolerance : ±0.5

Mouser Electronics

Authorized Distributor

Click to View Pricing, Inventory, Delivery & Lifecycle Information:

Parallax:

27964