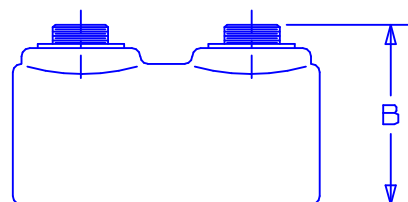
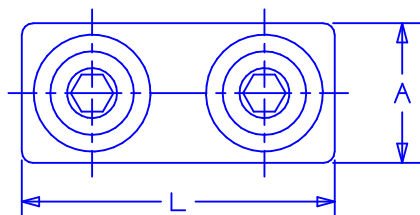


NOTES:

1. UL LISTED.
2. FOR COPPER WIRE ONLY.
3. IF HEX KEY IS NOT GIVEN, FLAT HEAD SCREW IS USED.
4. MADE IN THE USA.
5. SADDLE/PLATE PROVIDES UNIFORM CLAMPING FORCE WITHOUT DISTORTING THE CABLE SHAPE.



CATALOG NUMBER	CONDUCTOR RANGE	WIRE DIAMETER RANGE	APPROXIMATE DIMENSIONS			WRENCH SIZE	TORQUE VALUE IN-LBS
			A	B	L		
HC4-3	8 SOL. - 4 STR.	.128 - .234	.50	.56	1.25	SCREW DRIVER SLOT	35
HC8-3	4 SOL. - 1 STR.	.204 - .328	.69	.81	1.75	7/16	100
HC13-3	1 STR. - 2/0 STR.	.328 - .418	.81	.94	2.00	9/16	250
HC21-1	2/0 STR. - 4/0 STR.	.418 - .528	1.00	1.19	2.25	9/16	250
HC30-1	4/0 STR. - 300 MCM	.528 - .630	1.19	1.44	2.56	5/8	350
HC50-1	300 MCM - 500 MCM	.630 - .814	1.38	1.63	3.00	3/4	480

C41180_02

								<div><div>PANDUIT</div><div>TINLEY PARK, ILLINOIS</div></div>			
02	4/04	JHNU		REMOVED P/N'S HC75-1 AND HC100-1.				TWO-WAY CONNECTOR PREMIUM TYPE HC CUSTOMER DRAWING			
01	10/98	WB	WB	ADDED NOTE 5	07229	LA	RM				
00	10/96	TM	WB	RELEASED	05221	LA	RM				
REV	DATE	BY	CHK	DESCRIPTION	ECN #	APP	PM	DRAWN BY EJD	CHK'D WJB	SCALE N/A	DRAWING NO. C41180

Mouser Electronics

Authorized Distributor

Click to View Pricing, Inventory, Delivery & Lifecycle Information:

Panduit:

[HC13-3](#) [HC30-1](#) [HC21-1](#) [HC50-1](#) [HC4-3](#) [HC8-3](#)