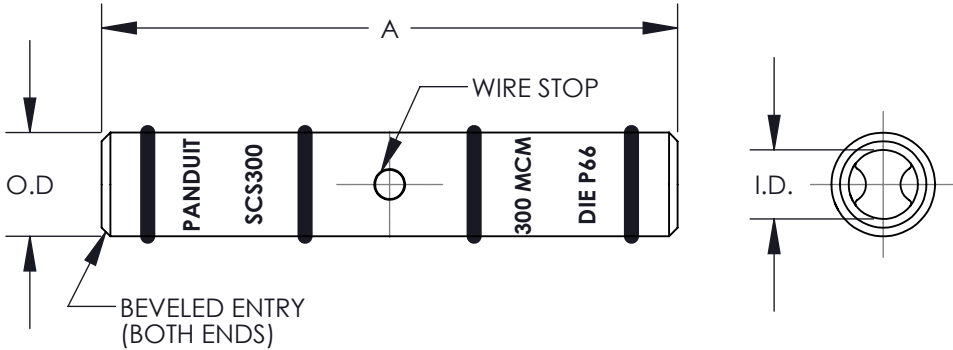


PANDUIT PART NUMBER	COPPER CONDUCTOR SIZE	EXPANDED WIRE RANGE***	BARREL		OVERALL LENGTH "A" +/- .12	WIRE STRIP LENGTH	PANDUIT CRIMP TOOL PART NUMBERS			
			I.D. +/- .01	O.D. +/- .01			CT-720	CT-920, CT-920CH, CT-930, CT-930CH, CT-940CH*, CT-2920, CT-2940*	CT-2001	CT-2950**, CT- 2980, CT-980, CT-980CH
			DIE PART NO./DIE SET COLOR & INDEX NO./NUMBER OF CRIMPS							
SCS300-X	300 kcmil	#2/0 - 300 kcmil	0.65	0.81	2.25	1-1/16	CD-720-4 WHITE P66 2 CRIMPS	CD-920-300 WHITE P66 2 CRIMPS	CD-2001-300 WHITE P66 2 CRIMPS	STD 2 CRIMPS
SCS350-X	350 kcmil	#3/0 - 350 kcmil	0.70	0.87	2.37	1-1/8	CD-720-5 RED P71 2 CRIMPS	CD-920-350 RED P71 2 CRIMPS	CD-2001-350 RED P71 2 CRIMPS	STD 2 CRIMPS
SCS350UP-X										
SCS400-6	400 kcmil	#4/0 - 400 kcmil	0.76	0.95	2.50	1-3/16	CD-720-6 BLUE P76 2 CRIMPS	CD-920-400 BLUE P76 2 CRIMPS	CD-2001-400 BLUE P76 2 CRIMPS	STD 2 CRIMPS
SCS400UP-6										
SCS500-6	500 kcmil	#4/0 - 500 kcmil	0.83	1.05	2.87	1-3/8	CD-720-7 BROWN P87 2 CRIMPS	CD-920-500 BROWN P87 2 CRIMPS	CD-2001-500 BROWN P87 2 CRIMPS	STD 2 CRIMPS
SCS500UP-6										
SCS600-6	600 kcmil	250 - 600 kcmil	0.92	1.18	2.87	1-3/8	---	CD-920-600 GREEN P94 2 CRIMPS	---	STD 2 CRIMPS
SCS600UP-6										
SCS750-6	750 kcmil	500 - 750 kcmil	1.03	1.29	3.37	1-5/8	---	CD-920-750 CD-940-750*** BLACK P106 2 CRIMPS	---	STD 2 CRIMPS
SCS750UP-6										
SCS800-6	800 kcmiL	----	1.05	1.35	3.37	1-7/8	---	CD-940-800*** ORANGE P107 2 CRIMPS	---	----
SCS1000-3	1000 kcmil	----	1.17	1.50	3.87	1-7/8	---	CD-940-1000*** WHITE P125 2 CRIMPS	---	----
SCS1000UP-3										

* CD-920 DIES CAN BE USED WITH CT-940CH AND CT-2940 TOOL WITH CD-940-DA DIE ADAPTER
** MAX SIZE 500 MCM
*** WITH CT-980, CT-980CH, CT-2950 7 CT-2980



- NOTES:
1. MATERIAL: HIGH CONDUCTIVITY SEAMLESS COPPER TUBING
 2. ELECTRO TIN PLATED
NOTE: SCS350UP, SCS400UP, SCS500UP, SCS600UP, SCS750UP, SCS1000UP ARE NOT PLATED
 3. BARREL COLOR CODED WITH DIE SET INDEX NUMBER
NOTE: PLATED PARTS ONLY
 4. UL LISTED WITH CODE COPPER CONDUCTORS FOR APPLICATIONS UP TO 35KV, FILE E52164
 5. CONSULT CABLE MANUFACTURER FOR VOLTAGE STREE RELIEF INSTRUCTIONS WITH APPLICATIONS GREATER THAN 2000 VOLTS
 6. CSA CERTIFIED FOR APPLICATIONS UP TO 600V, FILE LR31212
 7. FOR USE WITH COPPER CABLES ONLY



08	6/13	JHNU	RGB	ADDED SCS800 TO DRAWING	N41135BB-C41135	RGB	RGB	<div>PANDUIT CORP. TINLEY PARK, ILLINOIS</div> <div>SCS STANDARD BARREL #300-#1000 SPLICES</div> <div>CUSTOMER DRAWING</div>		
07	6/12	JHNU	RGB	REMOVED SCS800 FROM DRAWING	N41135BB-C41135	RGB	RGB			
06	2/12	JHNU	RGB	ADDED SCS800 TO DRAWING	N41135BB-C41135	RGB	RGB			
05	8/11	JHNU	RGB	ADDED SCS350UP, SCS400UP, SCS500UP, SCS600UP, SCS750UP, SCS1000UP, CONVERTED DWG TO SOLIDWORKS	N41135BB-C41135	RGB	RGB			
04	10/02	SAC		REMOVED SCS800-6				<div>UNLESS OTHERWISE SPECIFIED</div> <div>DIMENSIONAL TOLERANCES ARE:</div> <div>(.X) ± (.XXX) ±</div> <div>(.XX) ± ANGLES ±</div>		
03	6/02	SAB	JAC	ADDED SCS800-6, UPDATED SCS750-6 & SCS1000-3 TOOL INFO ALL kcmils WERE MCM	10252	JAC	LM			
02	4/01	BDK	SKB	ADDED LETTER "P" TO DIE INDEX NUMBER, ADDED CT-2980, CT-980, & CT-980CH, EXPANDED WIRE RANGE	09383	JAC	RM	<div>DRAWN BY PWS</div> <div>DATE 3/93</div> <div>CHK'D GRM</div>		
01	2/94	PWS	JCJ	FILESPEC WAS C41105, DWG WAS C41105	02060	LA	RM			
00	3/93	PWS	GRM	DRAWING RELEASED	01415		KRS	<div>DRAWING NO / CAD FILE</div> <div>C41135_08</div> <div>DWG B SIZE</div>		
REV	DATE	BY	CHK	DESCRIPTION	ECN	-R	SUP			

Mouser Electronics

Authorized Distributor

Click to View Pricing, Inventory, Delivery & Lifecycle Information:

[Panduit:](#)

[SCS800-6](#)