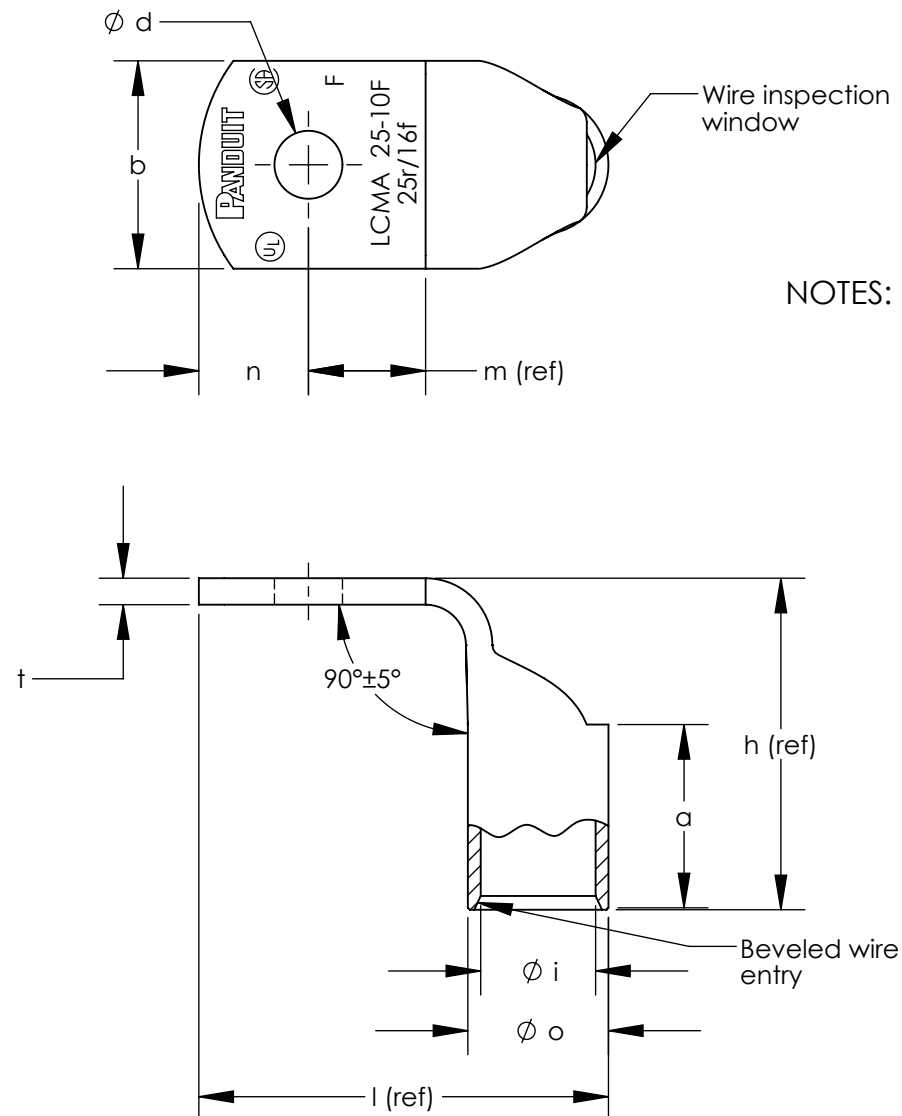


| ALL DIMENSIONS ARE IN mm | | | | | | | | | | | | | | | | | | |
|--------------------------|--------------------|-------------------------|-----------|-------------------|--|--|--|---------|---------|--------|--------|---------|---------|---------|--------|---------|------------|--|
| Part Number | Class 2r Wire Size | Class 5f & 6f Wire Size | Stud Size | Wire Strip Length | Panduit Die Index No. For Class 2r Wire Circumferential Dies | Panduit Die Index No For Class 5f & 6f Wire Circumferential Dies | Panduit Die Index No For Class 5f & 6f Wire Nest/Indenter Dies | l (ref) | h (ref) | o ±.50 | i ±.50 | a ±2.25 | m (ref) | n ±1.25 | d ±.50 | b ±1.25 | t | |
| LCMA 10-5F-C | 10 mm² | ----- | M5 | 12.50 | P21 | ----- | ----- | 24.5 | 19.0 | 6.20 | 4.50 | 11.0 | 9.8 | 6.0 | 5.50 | 11.0 | 1.20 ± .35 | |
| LCMA 10-6F-C | 10 mm² | ----- | M6 | 12.50 | P21 | ----- | ----- | 24.5 | 19.0 | 6.20 | 4.50 | 11.0 | 9.8 | 6.0 | 6.60 | 11.0 | 1.20 ± .35 | |
| LCMA 10-8F-C | 10 mm² | ----- | M8 | 13.00 | P21 | ----- | ----- | 25.2 | 18.3 | 6.20 | 4.50 | 11.5 | 8.5 | 8.0 | 9.00 | 13.0 | 1.05 ± .35 | |
| LCMA 10-10F-C | 10 mm² | ----- | M10 | 13.00 | P21 | ----- | ----- | 26.2 | 18.5 | 7.14 | 4.36 | 11.5 | 8.5 | 8.0 | 11.00 | 14.5 | 1.65 ± .35 | |
| LCMA 16-5F-C | 16 mm² | 10 mm² | M5 | 16.00 | P21 | P21 | P29/1 | 26.5 | 21.7 | 7.20 | 5.50 | 14.5 | 10.3 | 6.5 | 5.50 | 13.0 | 1.26 ± .40 | |
| LCMA 16-6F-C | 16 mm² | 10 mm² | M6 | 16.00 | P21 | P21 | P29/1 | 26.5 | 21.7 | 7.20 | 5.50 | 14.5 | 10.3 | 6.5 | 6.60 | 13.0 | 1.26 ± .40 | |
| LCMA 16-8F-C | 16 mm² | 10 mm² | M8 | 16.00 | P21 | P21 | P29/1 | 26.5 | 21.7 | 7.20 | 5.50 | 14.5 | 10.3 | 6.5 | 9.00 | 13.0 | 1.20 ± .40 | |
| LCMA 16-10F-C | 16 mm² | 10 mm² | M10 | 16.00 | P21 | P21 | P29/1 | 27.9 | 22.5 | 7.20 | 5.50 | 14.5 | 10.2 | 8.0 | 11.00 | 15.0 | 1.10 ± .40 | |
| *LCMA25-5F-C | 25 mm² | 16 mm² | M5 | 16.50 | P29 | P21 | P29/1 | 29.9 | 23.4 | 8.80 | 6.90 | 15.0 | 10.0 | 8.0 | 5.50 | 14.0 | 1.60 ± .40 | |
| LCMA 25-6F-C | 25 mm² | 16 mm² | M6 | 16.50 | P29 | P21 | P29/1 | 29.9 | 23.4 | 8.80 | 6.90 | 15.0 | 10.0 | 8.0 | 6.60 | 14.0 | 1.60 ± .40 | |
| LCMA 25-8F-C | 25 mm² | 16 mm² | M8 | 16.50 | P29 | P21 | P29/1 | 29.3 | 23.4 | 8.80 | 6.90 | 15.0 | 10.0 | 8.0 | 9.00 | 15.5 | 1.60 ± .40 | |
| LCMA 25-10F-C | 25 mm² | 16 mm² | M10 | 16.50 | P29 | P21 | P29/1 | 29.9 | 23.3 | 8.80 | 6.90 | 15.0 | 10.0 | 8.0 | 11.00 | 15.5 | 1.50 ± .40 | |

*CULUS LISTED WIRE CONNECTOR



NOTES:

1. Material: High conductivity seamless copper tube.
2. Plating: Parts are annealed and tin plated.
3. Wire Type: Class 2r, 5f & 6f Stranded Copper per DIN VDE 0295, IEC 60228 and HD 383.
4. UL Listed Wire Connector: Yes, for applications up to 35kv.
Consult cable manufacturer for voltage stress relief instructions with applications greater than 2000 volts.
5. UL Temperature Rating: 90° C
6. C.S.A. Certified Wire Connector: Yes
7. Parts are CE and tested per EN 61238-1:2003/IEC 61238-1:2003 Class B, with Class 2r wire 10mm² - 25mm².




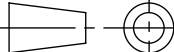
LISTED
Wire Connector



LISTED
Wire Connector



CERTIFIED

| | | | | | | | | | | | | | | |
|-----|-------|------|------|-----|-------------------|-------------|--|---------------|-------------|---|--------------|-----------|-------------------------------|--|
| | | | | | | | TITLE METRIC LUGS - LCMA ONE HOLE SERIES 10-25mm ² 90° BENT STANDARD BARREL CUSTOMER DRAWING | | | | | | | |
| | | | | | | | ITEM REVISION NAME 11J033BM/01 | | |  | | | | |
| | | | | | | | DATASET FILE NAME 11J033BM-JC/01.SLDDRW | | | | | | | |
| | | | | | | | UNLESS OTHERWISE SPECIFIED, DIMENSIONAL TOLERANCES ARE: IN [mm] | | | | | MATERIAL | | |
| | | | | | | | .X ± .XXX ± .XX ± ANGLES ±  | | | | | SEE NOTES | | |
| 01 | 7/15 | JHNU | JHNU | RGB | ADDED LCMA25-5F-C | 11J033BM-JC | | | | | | | | |
| 00 | 10/13 | JHNU | TLCO | RGB | DRAWING RELEASED | 11J033BM-JC | THIRD ANGLE PROJECTION | | | | | | DRAWING NUMBER 11J033BM-JC | |
| REV | DATE | BY | CHK | APR | DESCRIPTION | ECN | DRAWN BY JHNU | DATE 10/13 | CHK TLCO | SCALE NONE | SHEET 1 OF 1 | | SIZE B | |

Mouser Electronics

Authorized Distributor

Click to View Pricing, Inventory, Delivery & Lifecycle Information:

Panduit:

[LCMA25-8F-C](#) [LCMA10-10F-C](#) [LCMA10-6F-C](#) [LCMA10-8F-C](#) [LCMA16-6F-C](#) [LCMA25-5F-C](#) [LCMA10-5F-C](#)
[LCMA25-10F-C](#) [LCMA25-6F-C](#)