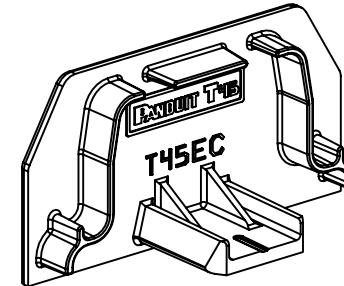
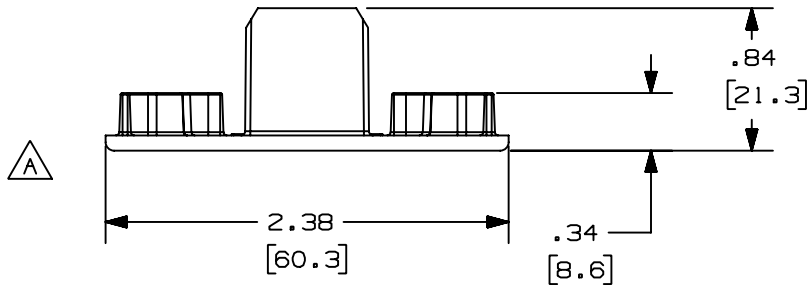
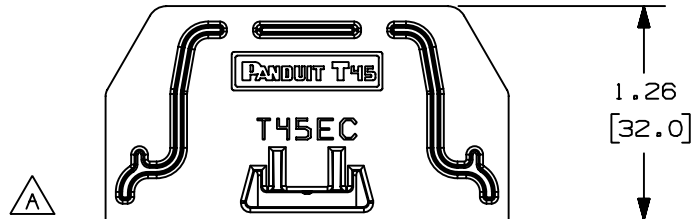


THIS COPY IS PROVIDED ON A RESTRICTED BASIS AND IS NOT TO BE USED IN ANY WAY DETRIMENTAL TO THE INTERESTS OF PANDUIT CORP.

| PANDUIT P/N | WEIGHT |
|-------------|---------------------------------|
| T45EC | .165 LB/10 PCS 74.8 g/10 PCS |

NOTES:

1. THIS FITTING IS INTENDED TO COVER OPEN ENDS OF THE T-45 RACEWAY.
2. DIMENSIONS IN PARENTHESES ARE IN METRIC.
3. SEE CURRENT CATALOG FOR ADDITIONAL PART SUFFIXES TO INDICATE COLOR AND OR PACKAGE QUANTITY.



| | | | |
|---|-------------------|---|-------------|
| CAD FILENAME/LAYERS | | D36975EA_DC_T45EC_01A.PRT | |
| PANDUIT | | CORP. TINLEY PARK, ILLINOIS | |
| T-45 END CAP FITTING | | (T45EC) | |
| CUSTOMER DRAWING | | | |
| UNLESS OTHERWISE SPECIFIED, DIMENSIONAL TOLERANCES ARE: (.X) ± (.XXX) ± (.XX) ±.03 (.8) ANGLES ± | | UNLESS OTHERWISE SPECIFIED, ALL DIMENSIONS ARE GIVEN IN INCHES, THIRD ANGLE PROJECTION. | |
| DRAWN BY RABO | MAT'L: PVC | SCALE NONE | |
| DATE 10-28-99 | | DRAWING NO. | DWG SIZE |
| CHECKED BY BKR | | 36975-61 | A |

| | | | | | | | | | |
|-----|----------|------|-----|------------------------------------|----------|-----|------|-----|--|
| 1 | 01-12-00 | JHNU | HIW | A. REVISED GEOMETRY TO REMOVE SLOT | 36975-61 | HIW | HIW | | |
| R | 10-28-99 | RABO | HIW | RELEASED TO PRODUCTION. | 36975-61 | HIW | HIW | | |
| REV | DATE | BY | CHK | DESCRIPTION | ECN | CHK | CUST | SUP | |

Mouser Electronics

Authorized Distributor

Click to View Pricing, Inventory, Delivery & Lifecycle Information:

Panduit:

[T45ECIW](#) [T45ECWH](#) [T45ECEI](#)