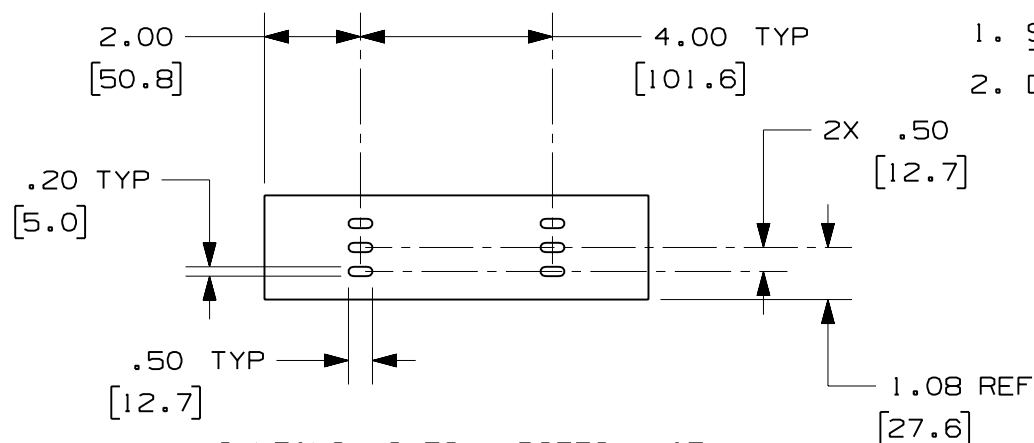


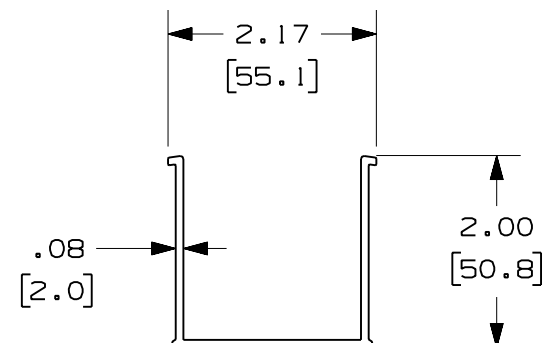
PANDUIT PART NUMBER	LENGTH	WEIGHT	WEIGHT/LENGTH
S2X2**2 (SEE NOTE 1)	78.74 IN ±.18 IN (2000.0mm ±4.6mm)	1.84 LB (835g)	0.28 LB/FT (4.2g/cm)
S2X2**6 (SEE NOTE 1)	72.00 IN ±.18 IN (1828.8mm ±4.6mm)	1.68 LB (762g)	0.28 LB/FT (4.2g/cm)
S2X2**2NM (SEE NOTE 1)	78.74 IN ±.18 IN (2000.0mm ±4.6mm)	2.08 LB (943g)	0.29 LB/FT (4.4g/cm)
S2X2**6NM (SEE NOTE 1)	72.00 IN ±.18 IN (1828.8mm ±4.6mm)	1.74 LB (789g)	0.29 LB/FT (4.4g/cm)

NOTES:

1. SEE CURRENT CATALOG FOR ADDITIONAL PART SUFFIXES TO INDICATE COLOR AND/OR PACKAGE QUANTITY.
2. DIMENSIONS IN PARENTHESES ARE IN METRIC.



MOUNTING HOLES - BOTTOM VIEW  
(S2X2\*\*2 AND S2X2\*\*6 ONLY)



ENG. REF.: D35245C0\_DC\_S2X2\_00.prt

CAD\_FILENAME/LAYERS

S2X2.pdf

PANDUIT CORP      TINLEY PARK, ILLINOIS

FIBER-DUCT 2x2 SOLID WALL CHANNEL  
(S2X2\*\*2, S2X2\*\*6, S2X2\*\*2NM, S2X2\*\*6NM)

CUSTOMER DRAWING

UNLESS OTHERWISE SPECIFIED,  
DIMENSIONAL TOLERANCES ARE:

$$\begin{array}{l} (.X) \pm \\ (.XX) \pm .03 \quad (0.8) \end{array} \quad \begin{array}{l} (.XXX) \pm \\ \text{ANGLES} \pm \end{array}$$

UNLESS OTHERWISE SPECIFIED,  
ALL DIMENSIONS ARE GIVEN IN  
INCHES, THIRD ANGLE PROJECTION.

DRAWN BY	
----------	--

MAT'L:	
--------	--

SCALE

NONE

DATE \_\_\_\_\_

1-5-07

PVC

DRAWING NO.

35245 - 41

DWG  
A  
SIZE

R	1-5-07	MSO	RN	RELEASED TO PRODUCTION	35245-41	RN	RN		
REV	DATE	BY	CHK	DESCRIPTION	ECN - R	CUST	SUP	GMBH	

# Mouser Electronics

Authorized Distributor

Click to View Pricing, Inventory, Delivery & Lifecycle Information:

Panduit:

[S2X2YL6NM](#) [S2X2BL6NM](#) [S2X2OR6NM](#)