

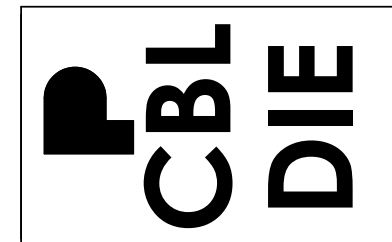
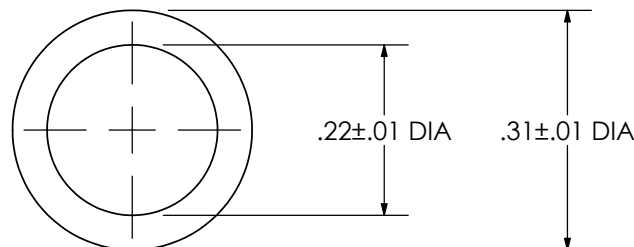
THIS COPY IS PROVIDED ON A RESTRICTED BASIS AND IS NOT TO BE USED IN ANY WAY DETRIMENTAL TO THE INTERESTS OF PANDUIT CORP.

Material	High Conductivity Seamless Copper Tube
Plating	Electro-Tin
Wire Type	Stranded Copper; Class B: Compact, Compressed or Concentric, Class C: Concentric
Wire Strip Length	7/16 in.
UL Listed Wire Connector	Yes, for applications up to 35kv. Consult cable manufacturer for voltage stress relief instructions with applications greater than 2000 volts.
UL Temperature Rating	90° C
C.S.A Certified Wire Connector	Yes
Panduit Color Code on Barrel	BLUE
Panduit Die Index No. on Barrel	P24

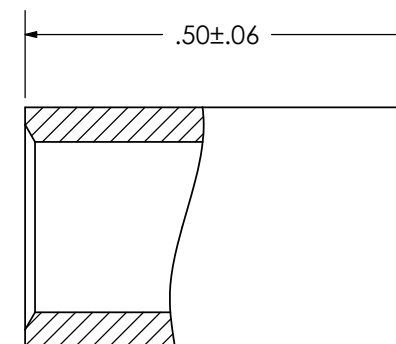
WIRE SIZE/COMBINATIONS	
(3) #12 str	(2) #10 str w/ (1) #14 str
(5) #14 str	(2) #12 str w/ (3) #14 str
(1) #8 str w/ (1) #14 str	(4) #12 str
(2) #10 str	(1) #8 str w/ (1) #10 str
(1) #8 str w/ (1) #12 str	(2) #10 str w/ (1) #12 str
(2) #12 str w/ (2) #14 str	(1) #8 str w/ (3) #14 str
(1) #10 str w/ (2) #12 str	(2) #10 str w/ (2) #14 str
(3) #12 str w/ (1) #14 str	(1) #8 str w/ (2) #12 str
(1) #10 str w/ (3) #14 str	(1) #6 str w/ (1) #14 str
(1) #8 str w/ (2) #14 str	



LISTED
Wire Connector



Color coded
barrel markings



						PANDUIT CORP. TINLEY PARK, ILLINOIS	
00	4/07	JHNU	TLCO	RELEASED	PC00728	PSCBLU-L Parallel Splice	
REV	DATE	BY	CHK	DESCRIPTION	ECN	SCALE N/A	DRAWING NO / CAD FILE PSCBLU-CUST

Mouser Electronics

Authorized Distributor

Click to View Pricing, Inventory, Delivery & Lifecycle Information:

Panduit:

PSCBLU-L