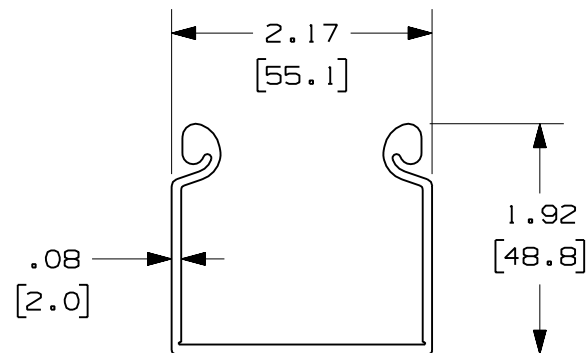
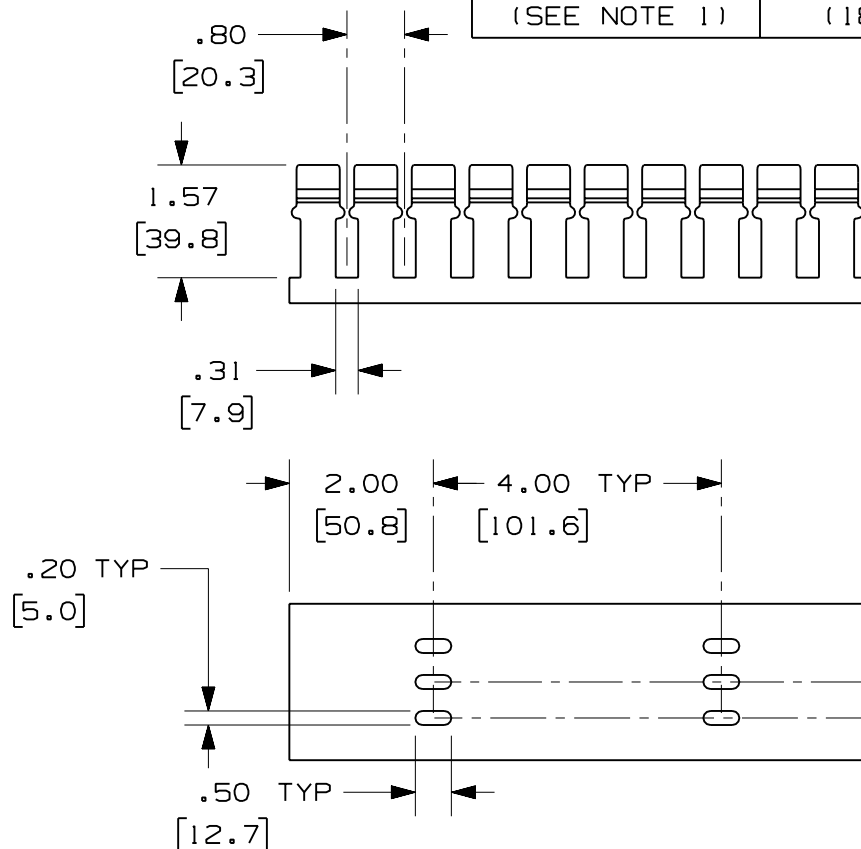


THIS COPY IS PROVIDED ON A RESTRICTED BASIS AND IS NOT TO BE USED IN ANY WAY DETRIMENTAL TO THE INTERESTS OF PANDUIT CORP.

| PANDUIT PART NUMBER | LENGTH | WEIGHT | WEIGHT/LENGTH |
|-------------------------|---------------------------------------|-------------------|-------------------------|
| H2X2**2 (SEE NOTE 1) | 78.74 IN ±.18 IN (2000.0mm ±4.6mm) | 1.97 LB (894g) | 0.30 LB/FT (4.5g/cm) |
| H2X2**6 (SEE NOTE 1) | 72.00 IN ±.18 IN (1828.8mm ±4.6mm) | 1.80 LB (816g) | 0.30 LB/FT (4.5g/cm) |

NOTES:

1. SEE CURRENT CATALOG FOR ADDITIONAL PART SUFFIXES TO INDICATE COLOR AND/OR PACKAGE QUANTITY.
2. DIMENSIONS IN PARENTHESES ARE IN METRIC.



ENG. REF.: D38258CJ_DC_H2X2_00.prt

CAD_FILENAME/LAYERS

H2X2.pdf

PANDUIT CORP. TINLEY PARK, ILLINOIS
FIBERRUNNER 2x2 HINGED SLOTTED
CHANNEL (H2X2**2, H2X2**6)
CUSTOMER DRAWING

UNLESS OTHERWISE SPECIFIED,
DIMENSIONAL TOLERANCES ARE:

| | |
|------------------|----------|
| (.X) ± | (.XXX) ± |
| (.XX) ±.03 (0.8) | ANGLES ± |

UNLESS OTHERWISE SPECIFIED,
ALL DIMENSIONS ARE GIVEN IN
INCHES, THIRD ANGLE PROJECTION.

| | |
|----------|-------|
| DATE | _____ |
| DRAWN BY | _____ |

| | |
|--------|--|
| MAT'L: | |
|--------|--|

SCALE

NONE

| |
|------|
| DATE |
|------|

1-8-07

PVC

DRAWING NO.

38258-25

DWG
A
SIZE

| | | | | | | | | | |
|-----|--------|-----|-----|------------------------|----------|------|-----|------|--|
| | | | | | | | | | |
| | | | | | | | | | |
| | | | | | | | | | |
| | | | | | | | | | |
| | | | | | | | | | |
| | | | | | | | | | |
| | | | | | | | | | |
| R | 1-8-07 | MSO | RN | RELEASED TO PRODUCTION | 38258-25 | RN | RN | | |
| REV | DATE | BY | CHK | DESCRIPTION | ECN - R | CUST | SUP | GMBH | |

Mouser Electronics

Authorized Distributor

Click to View Pricing, Inventory, Delivery & Lifecycle Information:

[Panduit:](#)

[H2X2OR6](#)