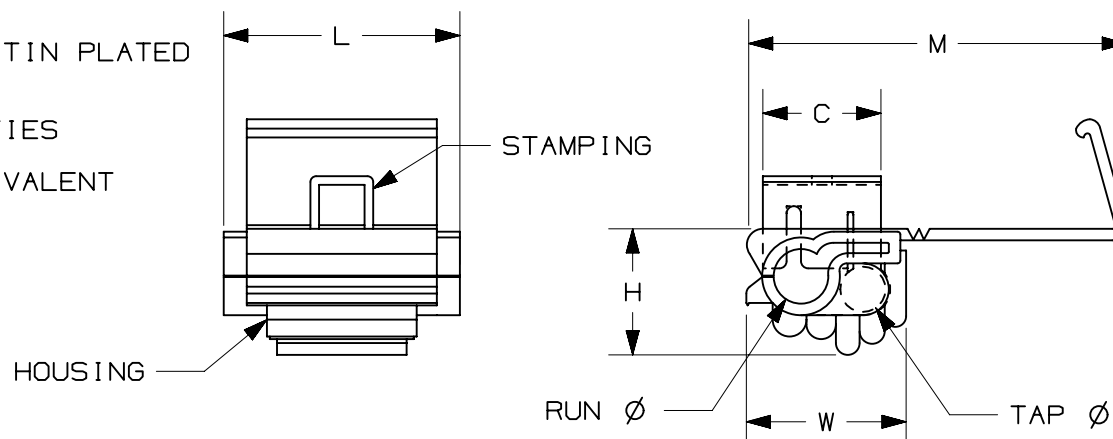


THIS COPY IS PROVIDED ON A RESTRICTED BASIS AND IS NOT TO BE USED IN ANY WAY DETRIMENTAL TO THE INTERESTS OF PANDUIT CORP.

PANDUIT PART #	TAP		RUN		DIMENSIONS in. [mm]				
	AWG [mm ²]	Ø ±.01 [0.3]	AWG [mm ²]	Ø ±.01 [0.3]	L ±.02 [0.5]	W ±.02 [0.5]	H ±.02 [0.5]	C ±.02 [0.4]	M ±.02 [0.6]
EQSP10-18D	#18-14 [0.75-1.5]	.16 [4.0]	#12-10 [4.0]	.19 [4.7]	.83 [21.1]	0.60 [15.2]	0.43 [10.9]	0.43 [10.9]	1.32 [33.5]

NOTES:

- USED FOR:
 - STRANDED COPPER WIRE ONLY
 - 221°F [105°C] MAX. OPERATING TEMPERATURE
 - 600 V. MAX VOLTAGE RATING
- MATERIAL:
 - STAMPING: .028" [0.7] THICK BRASS, TIN PLATED
 - HOUSING: POLYPROPYLENE, BROWN
- SEE www.panduit.com FOR PACKAGE QUANTITIES
- DIMENSIONS IN BRACKETS ARE METRIC EQUIVALENT



LISTED
2000
E52164

TITLE			
STRONGHOLD QUICK SPLICE CONNECTOR INSULATION DISPLACEMENT #18-14 TO #12-10 CUSTOMER DRAWING			
ITEM REVISION NAME		00123SSI/01	
DATASET FILE NAME		00123SSI/01	
UNLESS OTHERWISE SPECIFIED, DIMENSIONAL TOLERANCES ARE: IN [mm]		.x ± .1 [2.54] .xxx ± .005 [.127] .xx ± .01 [.25] ANGLES ± 5°	
THIRD ANGLE PROJECTION			
DRAWN BY JHNU		DATE -	CHK -
SCALE N.T.S.		SIZE A	
MATERIAL: SEE NOTES		DRAWING NUMBER: 00123SSI-DC	
REV		SHT 1 OF 1	

REV	DATE	BY	CHK	APR	DESCRIPTION	ECN
01	6/21	JHNU	TMR	JADE	REMOVED TOOL COLUMN	102186
00	2/18	JHNU	TMR	RGB	DRAWING RELEASED	00123SS

Mouser Electronics

Authorized Distributor

Click to View Pricing, Inventory, Delivery & Lifecycle Information:

Panduit:

[EQSP10-18D-Q](#)