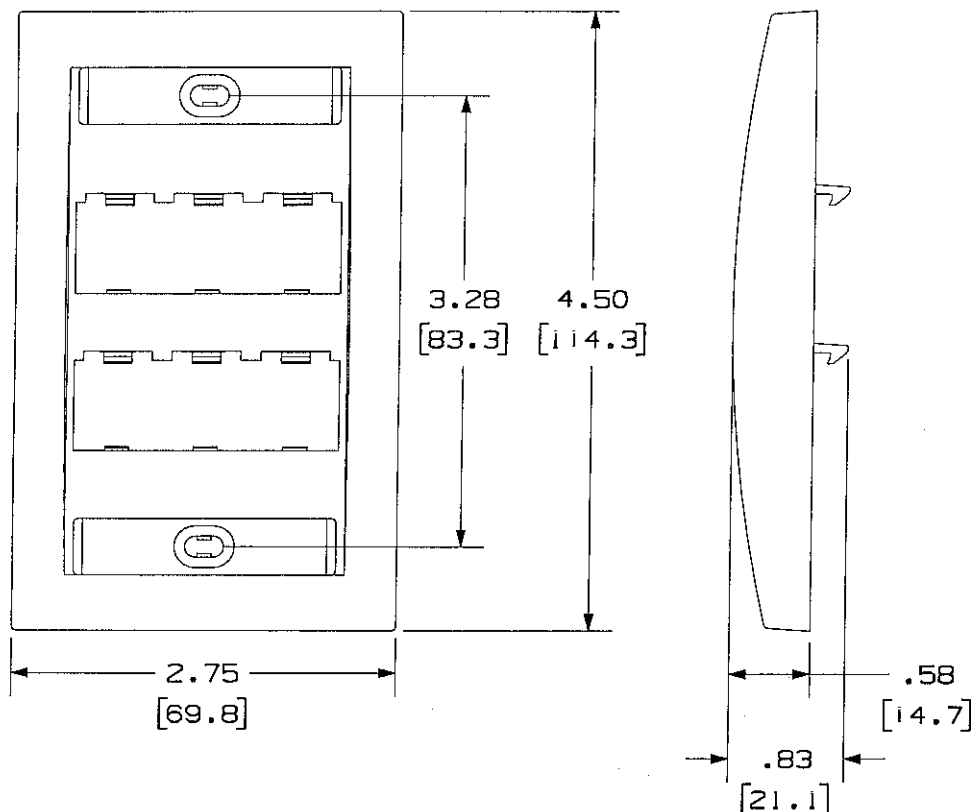


PANDUIT P/N	WEIGHT
CFPE6**Y	.67 LB/10 PCS 303.9 g/10 PCS)

- NOTES:
1. SEE CURRENT CATALOG FOR ADDITIONAL PART NUMBER SUFFIXES TO INDICATE COLOR AND OR PACKAGE QUANTITY.
  2. SEE CATALOG FOR COMPLETE LIST OF PARTS APPLICABLE FOR USE WITH THIS PART.
  3. DIMENSIONS IN ( ) ARE IN METRIC.
  4. PART INCLUDES:
    - 1- FACEPLATE
    - 2- LABEL
    - 2- LABEL COVER
    - 2- MOUNTING SCREW



## NETWORK SYSTEMS

MAY 25 2006

ENGINEERING DEPT

DRAWING FILENAME

MO2479EM\_DC119\_00A.PRT

[illegible]

A

MINI-COM 6 POSITION EXECUTIVE  
SERIES FACEPLATE CUSTOMER DRAWING



**PANDUIT**™  
CORP  
TINLEY PARK, ILL 60477

1.1. NUMBER	N/A
-------------	-----

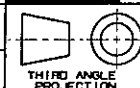
PRODUCT SPEC	N/A
--------------	-----

WORK INSTRUCTION	N/A
------------------	-----

SCALE	NONE
-------	------

PART NO.	CFPE6**Y
----------	----------

DRAWING NO. 02479-119



PROJECTED  
DRAWN BY  
JSP

DATE 4-26-06

CHK'D *11/23*

	MATERIALS
--	-----------

ABS

					MAY 25 2006				
					ENGINEERING DEPT				
R	4-26-06	JSP	[Signature]	RELEASED TO PRODUCTION	02479-119	[Signature]	[Signature]		
REV	DATE	BY	CHK	DESCRIPTION	ECN - R	CUST	SUP	OTH	

# Mouser Electronics

Authorized Distributor

Click to View Pricing, Inventory, Delivery & Lifecycle Information:

Panduit:

[CFPE6WH-LY](#) [CFPE6EI-LY](#) [CFPE6IW-LY](#)