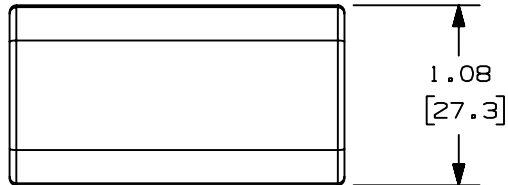


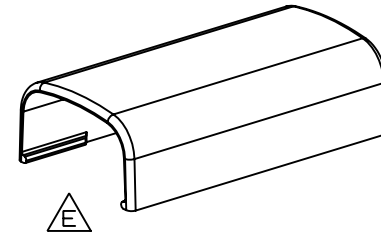
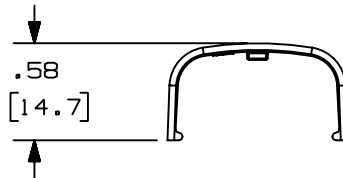
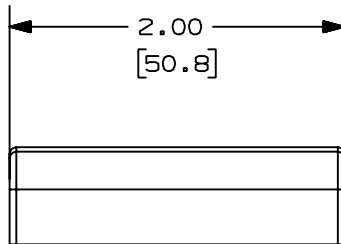
THIS COPY IS PROVIDED ON A RESTRICTED BASIS AND IS NOT TO BE USED IN ANY WAY DETRIMENTAL TO THE INTERESTS OF PANDUIT CORP.

$\triangle B$	PANDUIT P/N	WEIGHT
$\triangle C$	CF5	0.82 LB/100 PCS. (373g/100 PCS.)



$\triangle D$ NOTES:

1. SEE CURRENT CATALOG FOR ADDITIONAL PART NUMBER SUFFIXES TO INDICATE COLOR AND OR PACKAGE QUANTITY.
2. DIMENSIONS IN PARENTHESIS ARE IN METRIC.



CAD FILENAME/LAYERS D34474BC_DC_CF5_01.prt

						PANDUIT CORP. TINLEY PARK, ILLINOIS		
						COUPLER FITTING (CF5) CUSTOMER DRAWING		
						UNLESS OTHERWISE SPECIFIED, DIMENSIONAL TOLERANCES ARE: (.X) ± (.XXX) ± (.XX) ± .03(.8) ANGLES ±		UNLESS OTHERWISE SPECIFIED, ALL DIMENSIONS ARE GIVEN IN INCHES, THIRD ANGLE PROJECTION.
6	7-2-02	JHN/URMHI	F. REVISED MATERIAL IN DRAWING TITLE BLOCK.	16867	RGRD	RGRD		
5	8-28-00	MSO/HIW	E. REVISED AND REDRAWN ON CAD.	16867	HIW	HIW		
4	10-3-91	DW/CF	D. REVISED NOTE AND REMOVED COLOR FROM DRAWING.	16867		CF		
3	2-28-91	DW/CF	C. REVISED COLORS: OMIT BG, LI, LG. ADDED INT. WHITE AND INT. GRAY.	16867		WJB		
2	12-2-87	LDB/WJB	B. ADDED PART NUMBERS CF5E1 AND CF5LI.	16867		WJB		
1	5-14-82	KJS/JK	A. POLYSTYRENE WAS ABS.			JAK		
R	9-14-81	KJS/HP	DRAWING RELEASED			HP		
REV	DATE	BY	CHK	DESCRIPTION	ECN - R	CUST	SUP	
						DRAWN BY KJS	MAT'L: ABS	SCALE FULL
						DATE 9-10-81		DRAWING NO. SS-16867
						CHK'D JK	$\triangle A$ $\triangle F$	DWG SIZE A

Mouser Electronics

Authorized Distributor

Click to View Pricing, Inventory, Delivery & Lifecycle Information:

[Panduit:](#)

[CF5EI-E](#) [CF5WH-E](#) [CF5IW-E](#) [CF5IG-E](#)