

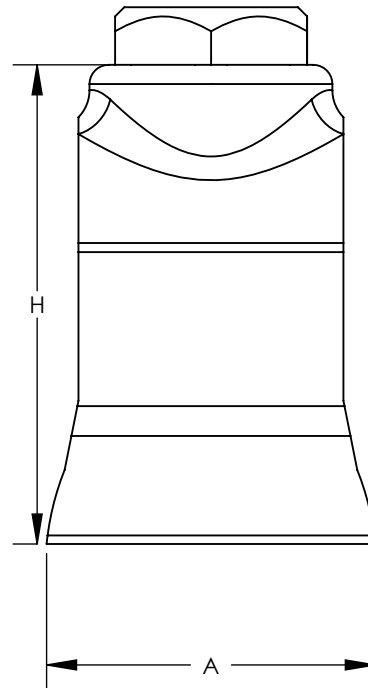
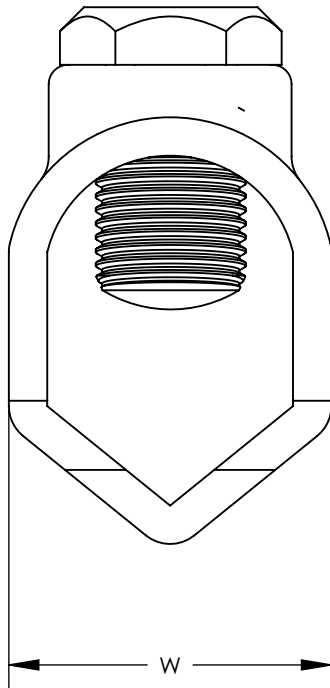
## NOTES:

1. MATERIAL:  
BODY - CASTED BRONZE  
SCREW - STAINLESS STEEL
2. DIRECT BURIAL
3. LISTED PER UL 467, CSA CERTIFIED
4. DIMENSIONS IN PARENTHESIS ARE MILLIMETERS.



CERTIFIED

PANUIT PART NUMBER	GROUND ROD SIZE	WIRE RANGE COPPER	INSTALLATION TOOL	DIMENSIONS - IN [mm]		
				W	H	A
WB12-L	1/2 INCH	2-10 AWG STR 10 AWG SOL	1/2 INCH HEX WRENCH	0.84 [21.3]	1.28 [32.5]	0.88 [22.4]
WB34-X	5/8 INCH 3/4 INCH	1/0 - 8 AWG STR 2 - 8 AWG STR	1/2 INCH HEX WRENCH	1.06 [26.9]	1.54 [39.1]	1.03 [26.2]
WB58-Q	5/8 INCH	1/0 - 8 AWG STR	1/2 INCH HEX WRENCH	0.92 [23.4]	1.40 [35.6]	1.04 [26.4]



02	10/11	JHNU	JHNU	REVISED NOTE 1: SCREW MATERIAL WAS SILICON BRONZE	N41399BB-C41399	RGB	RGB	
01	2/08	JHNU	JHNU	REVISED NOTES CONVERTED DRAWING TO SOLIDWORKS				
00	12/03	SRB		RELEASED				
REV	DATE	BY	CHK	DESCRIPTION	ECN	-R	SUP	
							SCALE	
							N/A	DRAWING NO / CAD FILE
								C41399_02

GROUND ROD CLAMP - WB SERIES  
(WB12-L, WB34-X, WB58-Q)  
CUSTOMER DRAWING

# Mouser Electronics

Authorized Distributor

Click to View Pricing, Inventory, Delivery & Lifecycle Information:

Panduit:

WB34-X