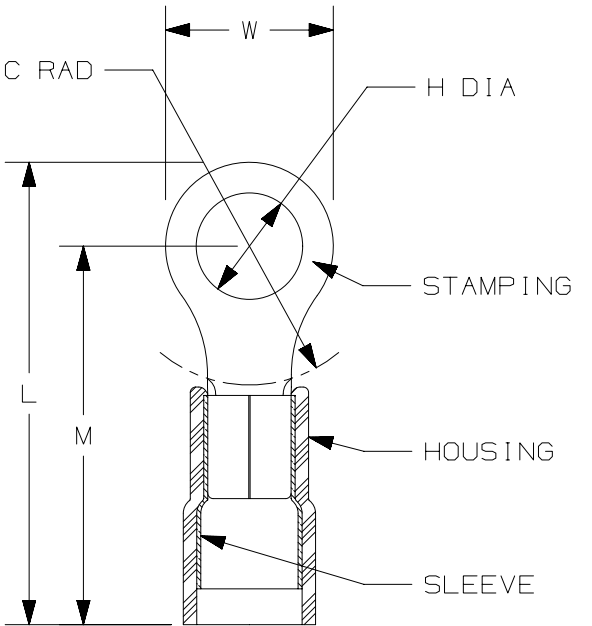


THIS COPY IS PROVIDED ON A RESTRICTED BASIS AND IS NOT TO BE USED IN ANY WAY DETRIMENTAL TO THE INTERESTS OF PANDUIT CORP.

PANDUIT PART #	MILITARY PART NO. AND CLASS	STUD SIZE		DIMENSIONS in. [mm]				
		ENGLISH	METRIC	L ± .03 [0,8]	W ± .01 [0,3]	C ± .02 [0,5]	M ± .03 [0,8]	H ± .01 [0,3]
PN18-4R	----	#4	--	.80 [20,3]	.25 [6,4]	.22 [5,6]	.67 [17,0]	.12 [3,1]
PN18-4RN	MS25036-148 CLASS 1 & 2	--	M3	.74 [18,8]	.22 [5,6]	.18 [4,6]	.63 [16,0]	.12 [3,1]
PN18-6R	MS25036-102 CLASS 1 & 2	#6	M3,5	.79 [20,1]	.25 [6,4]	.22 [5,6]	.67 [17,0]	.15 [3,8]
PN18-6RN	MS25036-101 CLASS 1 & 2	#6	M3,5	.77 [19,6]	.22 [5,6]	.18 [4,6]	.63 [16,0]	.15 [3,8]
PN18-8R	MS25036-149 CLASS 1 & 2	#8	M4	.85 [21,6]	.31 [7,9]	.25 [6,4]	.70 [17,8]	.17 [4,3]
PN18-10R	MS25036-103 CLASS 1 & 2	#10	--	.87 [22,1]	.31 [7,9]	.25 [6,4]	.70 [17,8]	.20 [5,1]
PN18-14R	MS25036-150 CLASS 1 & 2	1/4"	M6	1.05 [26,7]	.45 [11,4]	.38 [9,7]	.80 [20,3]	.27 [6,9]
PN18-56R	MS25036-104 CLASS 1 & 2	5/16"	M8	1.04 [26,4]	.46 [11,7]	.38 [9,7]	.84 [21,8]	.33 [8,4]
PN18-38R	MS25036-105 CLASS 1 & 2	3/8"	--	1.14 [29,0]	.53 [13,5]	.43 [10,9]	.91 [23,1]	.39 [9,9]
PN18-12R	----	1/2"	M12	1.32 [33,5]	.72 [18,3]	.53 [13,5]	.99 [25,1]	.52 [13,2]



NOTES:

- USED FOR:
 - A. 22-18 AWG [0,5-1,5 mm²] SOLID OR STRANDED COPPER WIRE
 - B. 221°F [105°C] MAX. OPERATING TEMPERATURE
 - C. 600V. MAX. BLDG WIRE (1000 V. MAX. IN SIGNS, FIXTURES & LUMINAIRES)
- INSTALLATION TOOLS PANDUIT APPROVED:
 - A. UL APPROVED: CT-100A, CT-400, (UL, MIL CLASS 2), CT-600-A W/CT-550CH OR CT-500CH, CT-1550, CT-1551, CT-2500 W/CT-2550CH
 - B. PANDUIT APPROVED: CT-160, CT-250
- WIRE STRIP LENGTH: 7/32 ^{+1/32}/₀ [5,6 ^{+0,8}/₀]
- MATERIAL:
 - A. STAMPING: .032" [0,8] THK COPPER, TIN PLATED
 - B. HOUSING: NYLON, RED
 - C. SLEEVE: BRASS, TIN PLATED
- SEE www.panduit.com FOR PACKAGE QUANTITIES INDICATED BY PART NUMBER SUFFIX
- DIMENSIONS IN BRACKETS ARE METRIC EQUIVALENT



LISTED
587H
E52164

CERTIFIED
LR31212

14	6/15	JHNU	JHNU	TMR	REVISED L DIMENSION: PN18-14R: 1.05 WAS 1.09, PN18-56R: 1.04 WAS 1.09, PN18-38R: 1.14 WAS 1.17, PN18-12R: 1.32 WAS 1.35	N41543BA-A41543
13	5/14	JHNU	JHNU	RGB	REVISED A DIM: PN18-6R WAS .80, PN18-8R WAS .86, PN18-10R WAS .88 REVISED TITLE BLOCK	N41543BA-A41543

TITLE	
3 PC. NYLON INSULATED 22-18 BARREL, RING TERMINALS CUSTOMER DRAWING	
ITEM REVISION NAME	N41543BA/14
DATASET FILE NAME	N41543BA_DC/14A
UNLESS OTHERWISE SPECIFIED, DIMENSIONAL TOLERANCES ARE: IN [mm]	
.X ±	.XXX ±
.XX ±	ANGLES ±
THIRD ANGLE PROJECTION	
DRAWING NUMBER: A41543	
DRAWN BY	CHK
BDK	LA
DATE	SCALE
	NONE
SHT 1 OF 1	
SIZE A	

REV	DATE	BY	CHK	APR	DESCRIPTION	ECN

D10100DA/16

Mouser Electronics

Authorized Distributor

Click to View Pricing, Inventory, Delivery & Lifecycle Information:

Panduit:

[PN18-6RN-M](#) [PN18-8R-M](#) [PN18-4RN-M](#) [PN18-14R-C](#) [PN18-4R-C](#) [PN18-4RN-C](#) [PN18-56R-C](#) [PN18-8R-C](#) [PN18-10R-C](#) [PN18-10R-M](#) [PN18-6RN-C](#) [PN18-14R-M](#) [PN18-4R-M](#) [PN18-56R-M](#) [PN18-6R-M](#) [PN18-6R-C](#) [PN18-38R-M](#)
[PN18-12R-L](#) [PN18-38R-C](#)