

THIS COPY IS PROVIDED ON A RESTRICTED BASIS AND IS NOT TO BE USED IN ANY WAY DETRIMENTAL TO THE INTERESTS OF PANDUIT CORP.

PANDUIT PART #	STUD SIZE		DIMENSIONS in. [mm]				
	ENGLISH	METRIC	L ± .03 [0,8]	W ± .01 [0,3]	C ± .02 [0,5]	M ± .03 [0,8]	H ± .01 [0,3]
PM2-3F*	--	M3	.63 [16,00]	.23 [5,84]	.22 [5,59]	.49 [12,45]	.13 [3,30]
P14-6F	#6	M3,5	.63 [16,00]	.28 [7,11]	.20 [5,08]	.49 [12,45]	.15 [3,81]
P14-6FN	#6	M3,5	.63 [16,00]	.24 [6,10]	.20 [5,08]	.49 [12,45]	.15 [3,81]
P14-8F	#8	M4	.69 [17,53]	.31 [7,87]	.23 [5,84]	.53 [13,46]	.17 [4,32]
P14-10F	#10	--	.71 [18,03]	.34 [8,64]	.25 [6,35]	.55 [13,97]	.20 [5,08]
P14-10FN	#10	--	.71 [18,03]	.31 [7,87]	.25 [6,35]	.55 [13,97]	.20 [5,08]
PM2-5F*	--	M5	.71 [18,03]	.34 [8,64]	.27 [6,86]	.55 [13,97]	.21 [5,33]
P14-14F	1/4"	M6	.88 [22,35]	.44 [11,18]	.33 [8,38]	.63 [16,00]	.27 [6,86]

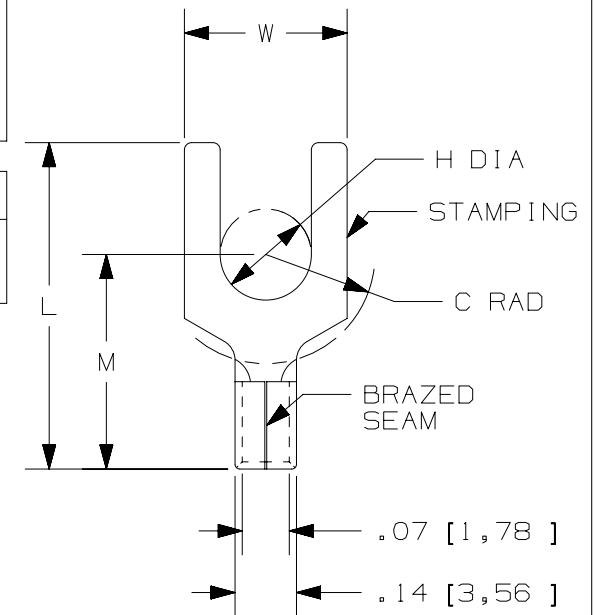
\*NOT CSA CERTIFIED

NOTES:

- UL LISTED & CSA CERTIFIED FOR:
  - #18-14 AWG [ 1,0-2,5 mm<sup>2</sup> ] SOLID OR STRANDED COPPER WIRE
  - 302°F [150°C] MAX OPERATING TEMPERATURE
  - 2000 VOLTS MAX
- SEE WWW.PANDUIT.COM FOR PACKAGE QUANTITIES
- MATERIAL:
  - STAMPING: .032" [0,8] THK COPPER, TIN PLATED
- DIMENSIONS IN BRACKETS ARE METRIC EQUIVALENT
- WIRE STRIP LENGTH: 9/32" <sup>+1/32</sup>/<sub>-0</sub> [7,1mm <sup>+0,8</sup>/<sub>-0</sub> ]

UL & CSA TOOLS
CT-100A CT-200 CT-600-A (CT-570CH) CT-1570 CT-2500 (CT-2570CH)

PANDUIT APPROVED TOOLS
CT-160 CT-260



TITLE	
<b>#18-14 BARREL NON-INSULATED FORK</b>	
CUSTOMER DRAWING	
ITEM REVISION NAME	N41255BA/11
DATASET FILE NAME	N41255BA_DC/11A
UNLESS OTHERWISE SPECIFIED, DIMENSIONAL TOLERANCES ARE: IN [ mm ]	
.X ±	.XXX ±
.XX ±	ANGLES ±
THIRD ANGLE PROJECTION	
DRAWING NUMBER: <b>A41255</b>	
DRAWN BY	MS
DATE	-
CHK	-
SCALE	NONE
SHEET 1 OF 1	
SIZE A	

REV	DATE	BY	CHK	APR	DESCRIPTION	ECN
11	5/17	JHNU	TMR	RGB	ADDED CSA BACK TO DRAWING, UPDATED TOOL CHART FORMAT	N41255BA-A41255
10	06/14	MBY	JHNU	RGB	REVISED NOTES, MOVED TOOLS TO TABLE, REVISED CERTIFICATION	N41255BA-A41255
09	07.20.12	BDK	LCA	VMB	ADDED PM2-3F AND PM2-5F. ADDED METRIC EQUIVALENT. CHANGED PACKAGING NOTE. REVISED INSTALLATION TOOLS NOTE. BROUGHT DRAWING TO CURRENT STANDARDS.	N41255BA-DC

D10100DA/12

# Mouser Electronics

Authorized Distributor

Click to View Pricing, Inventory, Delivery & Lifecycle Information:

[Panduit:](#)

[P14-6FN-M](#) [P14-10F-M](#) [P14-10FN-M](#) [P14-14F-M](#) [P14-8F-M](#) [P14-6F-M](#) [P14-14F-C](#) [P14-10F-C](#) [P14-8F-L](#) [P14-6FN-C](#) [P14-10FN-C](#) [P14-6F-C](#) [P14-8F-C](#)