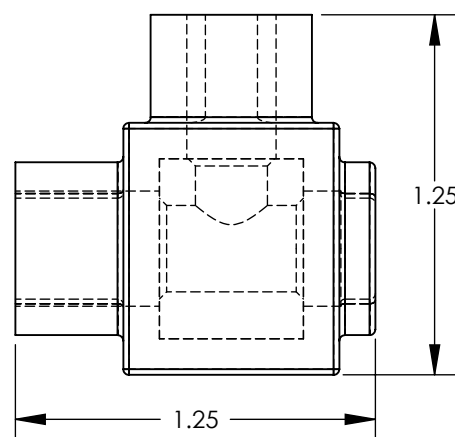
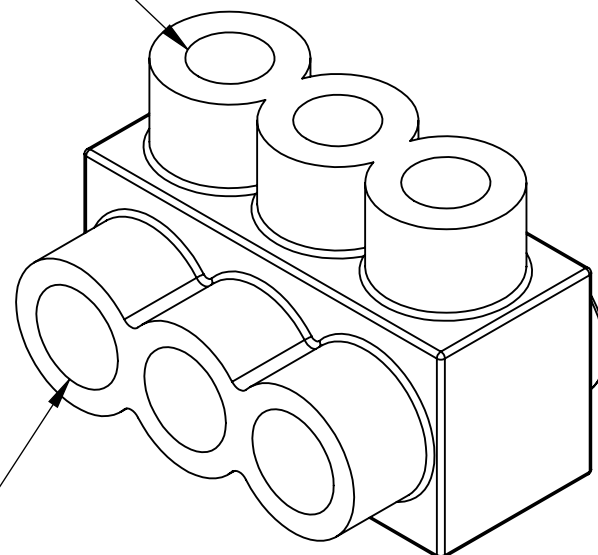
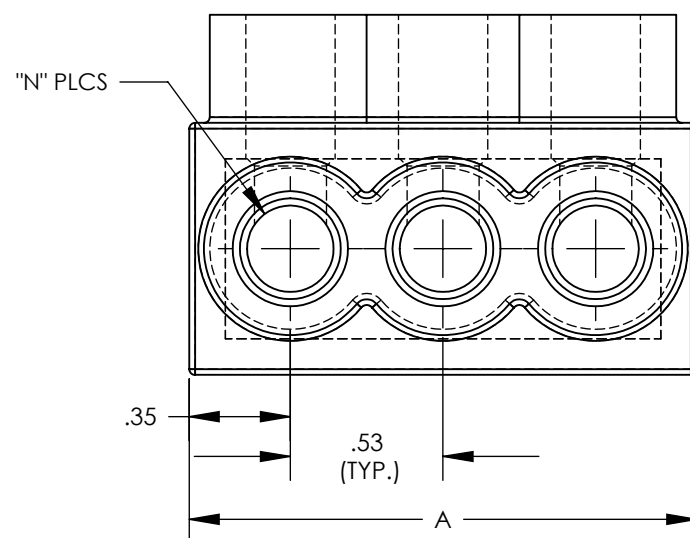


THREE PORT CONNECTOR BLOCK SHOWN
WITH PLASTIC CLOSURE PLUGS REMOVED.
SEE TABLE FOR DIMENSIONS OF PARTS
WITH ADDITIONAL PORTS

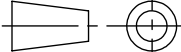


PANDUIT FINISHED GOODS P/N	CONDUCTOR RANGE	HEX KEY	SCREW QTY.	CAP (SCREW PORT) QTY.	CAP (WIRE PORT) QTY.	A	L	N	TIGHTENING TORQUE
PCSB210-2S-6	# 210 - # 14 STR # 10 - # 14 SOL	3/16	2	2	2	1.52	1.265	2	120 in/lb
PCSB210-3S-6Y		3/16	3	3	3	2.19	1.937	3	
PCSB210-4S-6Y		3/16	4	4	4	2.86	2.609	4	
PCSB210-5S-4Y		3/16	5	5	5	3.53	3.281	5	
PCSB210-6S-4Y		3/16	6	6	6	4.20	3.953	6	
PCSB210-8S-3Y		3/16	8	8	8	5.55	5.297	8	
PCSB210-10S-2Y		3/16	10	10	20	6.89	6.641	10	
PCSB210-12S-1Y		3/16	12	12	24	8.24	7.985	12	
PCSB210-14S-1Y		3/16	14	14	28	9.58	9.329	14	



NOTES:

1. UL486A-UL486B LISTED, DUAL RATED CU9AL FOR ALUMINUM OR COPPER CONDUCTORS. MEETS OR EXCEEDS ANSI C119.4
2. SEE TABLE FOR WIRE RANGE.
3. STRIP LENGTH: .63 +.06/-0
4. FOR TIGHTENING TORQUE SEE TABLE
5. VOLTAGE RATING: 600 V. MAX. BUILDING WIRE, 1000 V. MAX. IN SIGNS & FIXTURES.
6. TEMPERATURE RATING: 90 °C (CU9AL).
7. CONNECTOR BLOCK BODY ARE MADE FROM ALUMINUM. CONDUCTOR PORTS IN CONNECTOR BLOCK ARE PREFILLED WITH AN OXIDE-INHIBITING COMPOUND.
8. CONNECTOR TO INCLUDE TIN PLATED ALUMINUM CLAMPING SCREWS FOR EACH CONDUCTOR PORT.
9. INSULATION MATERIAL IS CLEAR PVC.
10. CLAMPING SCREW ACCESS PORTS AND ALL WIRE ENTRY PORTS ARE PROVIDED WITH REMOVABLE PLASTIC CLOSURE PLUGS.
11. ALL DIMENSIONS SHOWN ARE NOMINAL.
- 12 ONLY ONE CONDUCTOR PER PORT ALLOWED.
- 13 PACKAGE QTY: -12 = 12 PCS.
 -6 = 6 PCS.
 -4 = 4 PCS.
 -3 = 3 PCS.
 -2 = 2 PCS.
- 14 THIS PART IS RoHS COMPLIANT

						TITLE	MULTI-TAP INSULATED CONNECTORS PCSB2/0 SERIES SINGLE SIDED CUSTOMER DRAWING					
						ITEM REVISION NAME	N41523BB-C41523/06					
						DATASET FILE NAME	C41523/06.SLDDRW					
						UNLESS OTHERWISE SPECIFIED, DIMENSIONAL TOLERANCES ARE: IN [mm]						
						.X ± .XXX ± .XX ± .02 ANGLES ±						
						 THIRD ANGLE PROJECTION						
06	2/13	JHNU	JHNU	RGB	REVISED TITLE BLOCK	N41523BB-C41523						
REV	DATE	BY	CHK	APR	DESCRIPTION	ECN	DRAWN BY	DATE	CHK	SCALE	DRAWING NUMBER	SIZE
							MS	8/99	RLS	NONE	SHEET 1 OF 1	B

Mouser Electronics

Authorized Distributor

Click to View Pricing, Inventory, Delivery & Lifecycle Information:

Panduit:

[PCSB2/0-2S-6](#) [PCSB2/0-10S-2Y](#) [PCSB2/0-8S-3](#)