
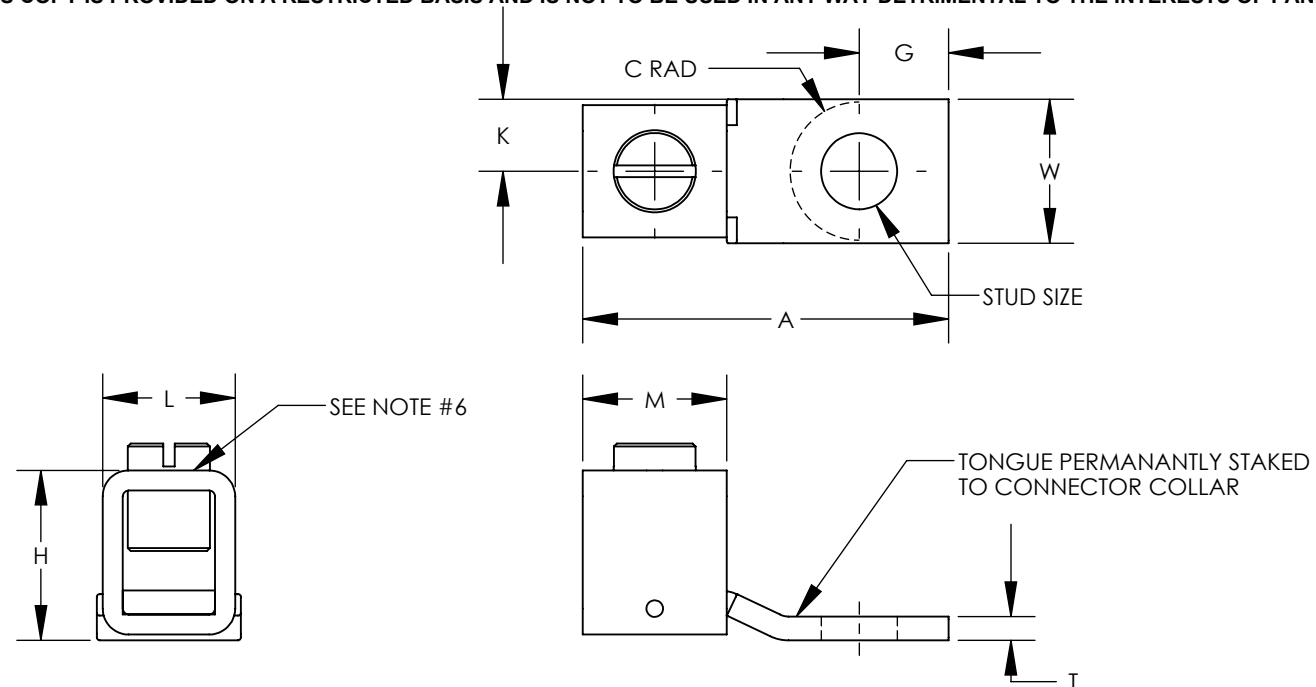

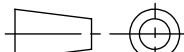


1. MATERIAL:
BODY - COPPER
 DENOTES BODY IS TIN PLATED COPPER
SCREW - STEEL, ZINC PLATED
2. UL LISTED & CSA CERTIFIED FOR USE UP TO 600V & TEMPERATURE RATED 90°C
3. RATED FOR USE WITH COPPER STRANDED CODE CONDUCTOR ONLY
4. THESE PARTS ARE RoHS COMPLIANT
5. SEE PACKAGING LABEL FOR TIGHTENING TORQUE INFORMATION
6. PROFILE OF COLLAR MAY VARY BETWEEN CURVED AND FLAT.
7. PKG QTY:
C = 100
D = 250
Q = 25



* HEX STYLE & SIZE MAY DIFFER FROM CHART. DIFFERENCE IN SIZE WILL NOT AFFECT FIT, FORM, OR FUNCTION OF PART

							TITLE CX SERIES COPPER MECHANICAL CONNECTORS CUSTOMER DRAWING									
							ITEM REVISION NAME N41664BA-C41664/12									
							DATASET FILE NAME C41664/12.SLDDRW									
							UNLESS OTHERWISE SPECIFIED, DIMENSIONAL TOLERANCES ARE: IN [mm]						MATERIAL			
							<div>.X ± .XXX ± .XX ± ANGLES ±</div>  THIRD ANGLE PROJECTION						SEE NOTES			
12	4/13	JHNU	JHNU	RGB	REPLACED MISSING "A" DIMENSION REVISED HEX SIZE FOR CX225: 3/16 WAS 9/16	N41664BA-C41664										
11	2/13	JHNU	JHNU	RGB	REVISED TITLE BLOCK	N41664BA-C41664										
REV	DATE	BY	CHK	APR	DESCRIPTION	ECN	DRAWN BY JHNU		DATE 3/06	CHK JHNU	SCALE NONE	DRAWING NUMBER C41664_12		SHEET 1 OF 1	SIZE B	

Mouser Electronics

Authorized Distributor

Click to View Pricing, Inventory, Delivery & Lifecycle Information:

Panduit:

[CX35-36T-CY](#) [CX125-56SLT-QY](#) [CX225-56HKT-QY](#) [CX225-38HKT-QY](#) [CX225-56HK-QY](#) [CX35-36-DY](#) [CX70-14T-CY](#)