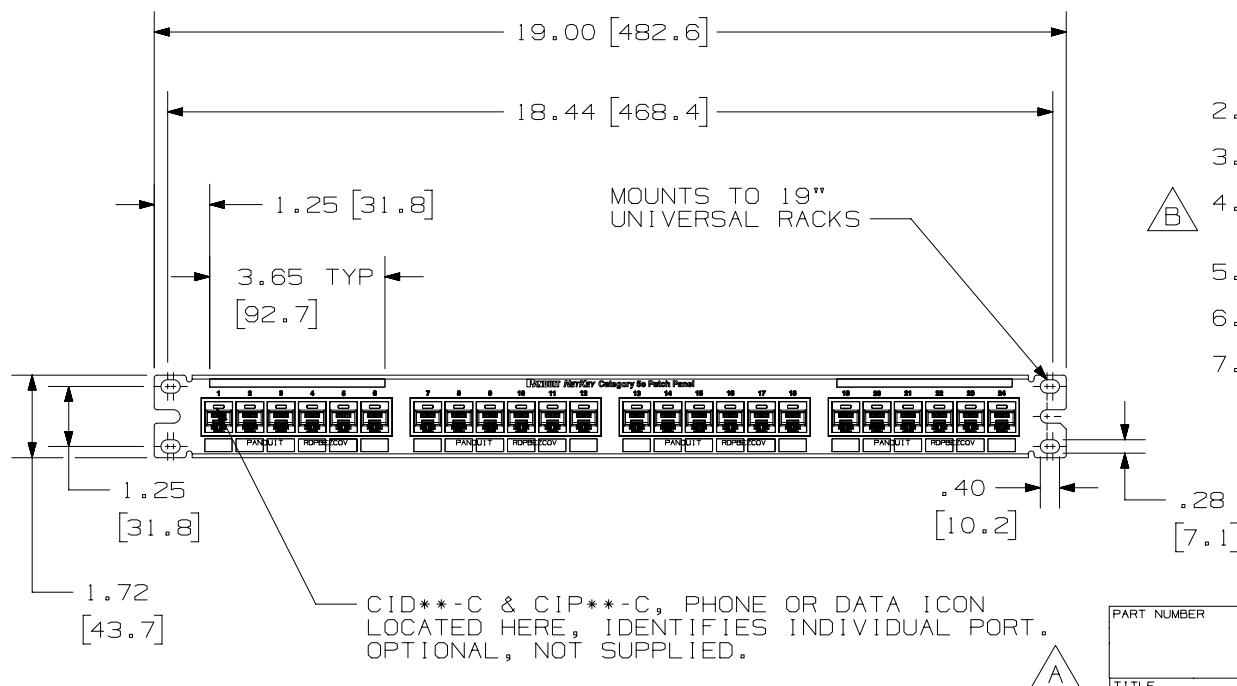


PANDUIT PART NO.	WEIGHT (APPROX.)
NK5EPPG24Y	1.25 lb (567 g)

1. MATERIAL :
PANEL HOUSING: STEEL
RJ45 MODULE: THERMOPLASTIC RESIN
UL94V-0
PUNCHDOWN BLOCKS: THERMOPLASTIC
RESIN UL94V-0
BEZEL ASSEMBLY: THERMOPLASTIC RESIN
UL94H-B
RETENTION CAP:
THERMOPLASTIC RESIN UL94V-0
2. 24 PORT PATCH PANEL 8 POSITION
8 WIRE.
3. THE PATCH PANEL IS DESIGNED FOR
MOUNTING TO 19" UNIVERSAL RACKS.
4. FOUR (4) 12-24 X 1/2" ROUND HEAD
SCREWS ARE PROVIDED FOR FASTENING
TO RACKS.
5. DIMENSIONS IN PARENTHESES ARE IN
METRIC.
6. USE 110 STYLE TERMINATION
TOOL FOR PUNCH DOWN.
7. RETENTION CAPS
(ONE PER CONNECTOR)
PROVIDED FOR SNAP-IN ON TERMINATED
CONNECTORS.



PART NUMBER		NK5EPPG24Y			
TITLE					
NETKEY CAT5E 24 PORT PATCH PANEL					
CUSTOMER DRAWING					
ITEM REVISION NAME		M02479JN/01			
DATASET FILE NAME		M02479JN_DC250/01A			
UNLESS OTHERWISE SPECIFIED, DIMENSIONAL TOLERANCES ARE: IN [mm] .X ± .XXX ± .010 [.3] .XX ± .03 [.8]				MATERIAL: SEE NOTE 1	
				THIRD ANGLE PROJECTION	
DRAWING NUMBER:				02479-250	
DRAWN BY	DATE	CHK	SCALE	SIZE	
LZ	3-04-06	CEF	.25-1	SHT 1 OF 1	
				A	

Mouser Electronics

Authorized Distributor

Click to View Pricing, Inventory, Delivery & Lifecycle Information:

Panduit:

[NK5EPPG24Y](#)