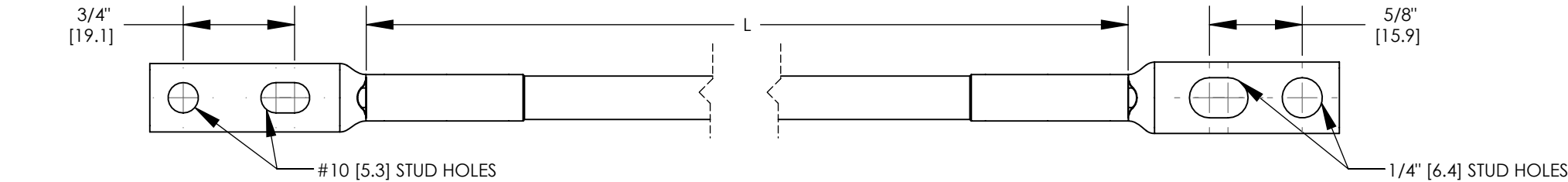


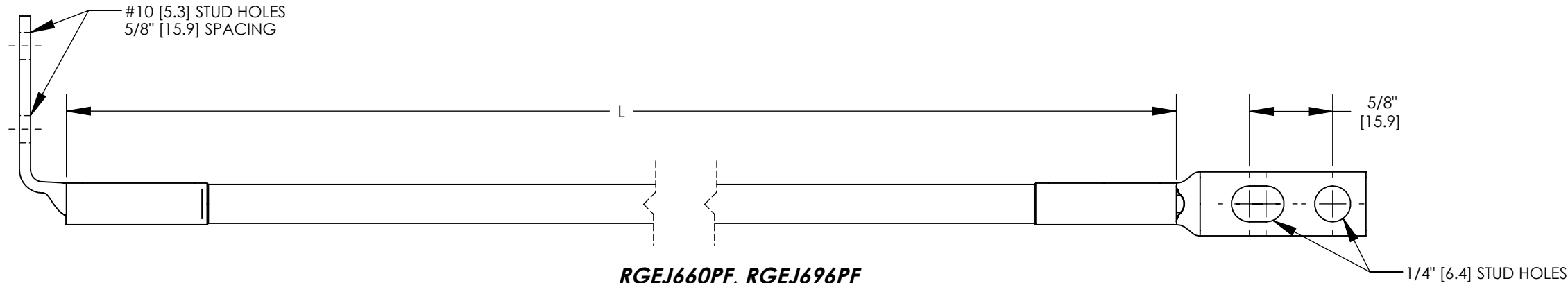
NOTES:

1. PART NUMBERS: RGEJ660U, RGEJ696U, RGEJ696PF, RGEJ1024URT
2. DIMENSIONS IN INCHES, DIMENSIONS IN BRACKETS ARE MILLIMETERS



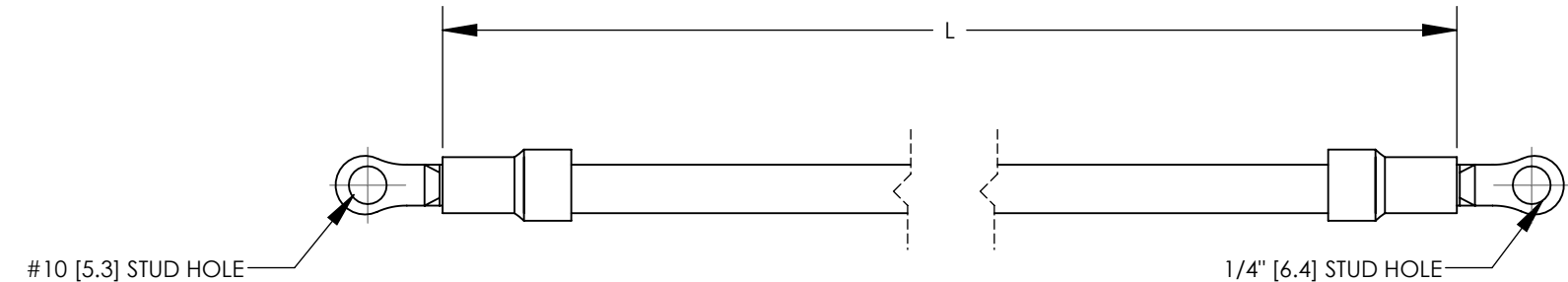
RGEJ660U, RGEJ696U

FACTORY CRIMPED #6 AWG/16mm SQ. JUMPER WIRE ASSEMBLY (QTY. 1) INCLUDES:  
LCC6-14JAW (QTY. 1)  
LCC6-10ABW (QTY. 1)  
#6 AWG/16mm SQ. WIRE - GREEN/YELLOW INSULATION



RGEJ660PF, RGEJ696PF

FACTORY CRIMPED #6 AWG/16mm SQ. JUMPER WIRE ASSEMBLY (QTY. 1) INCLUDES:  
LCC6-14JAW (QTY. 1)  
LCC6-10AWF (QTY. 1)  
#6 AWG/16mm SQ. WIRE - GREEN/YELLOW INSULATION



RGEJ1024URT

FACTORY CRIMPED #10 AWG/6mm SQ. JUMPER WIRE ASSEMBLY (QTY. 1) INCLUDES:  
PV10-10RX (QTY. 1)  
PV10-14RX (QTY. 1)  
#10 AWG/6mm SQ. WIRE - GREEN/YELLOW INSULATION

PANDUIT PART NUMBER	L IN [mm]
RGEJ660U	60.00 [1524.0]
RGEJ696U	96.00 [2438.4]
RGEJ660PF	60.00 [1524.0]
RGEJ696PF	96.00 [2438.4]
RGEJ1024URT	24.00 [609.6]

										10J021BB-JC/01A
										<div><div>PANDUIT</div><div>CORP. TINLEY PARK, ILLINOIS</div></div>
										STRUCTURED GROUND EQUIPMENT GROUNDING JUMPERS (RGEJ660U, RGEJ696U, RGEJ696PF, RGEJ1024URT) CUSTOMER DRAWING
										UNLESS OTHERWISE SPECIFIED DIMENSIONAL TOLERANCES ARE: (.X) ± ---    (.XXX) ± --- (.XX) ± ---    ANGLES ± ---
										UNLESS OTHERWISE SPECIFIED, ALL DIMENSIONS ARE GIVEN IN INCHES, THIRD ANGLE PROJECTION
01	1/12	JHNU	RGB	ADDED RGEJ660PF, RGEJ696PF REVISED TERMINAL ON RGEJ1024URT: ADDED PV10-14RX	10J021BB-JC	RGB	RGB	DRAWN BY JHNU	MAT'L:	SCALE NONE
00	2/11	JHNU	JHNU	DRAWING RELEASED	10J021BB-JC	FLD	FLD	DATE 2/11	SEE NOTES	DRAWING NO / CAD FILE 10J021BB-JC
REV	DATE	BY	CHK	DESCRIPTION	ECN	-R	SUP	CHK'D		DWG B SIZE

# Mouser Electronics

Authorized Distributor

Click to View Pricing, Inventory, Delivery & Lifecycle Information:

Panduit:

[RGEJ660PF](#)