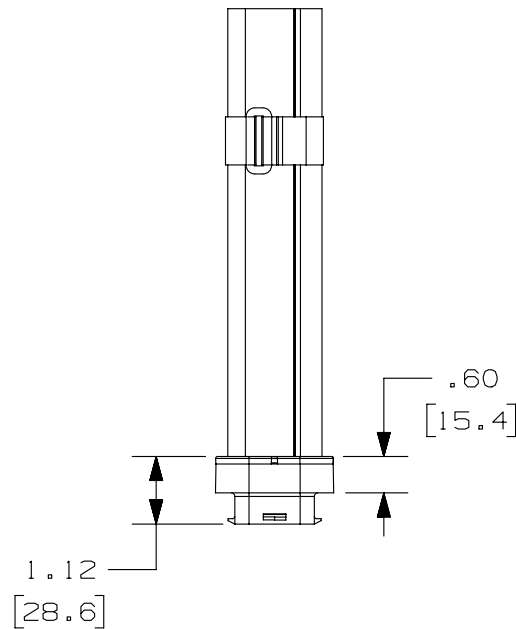
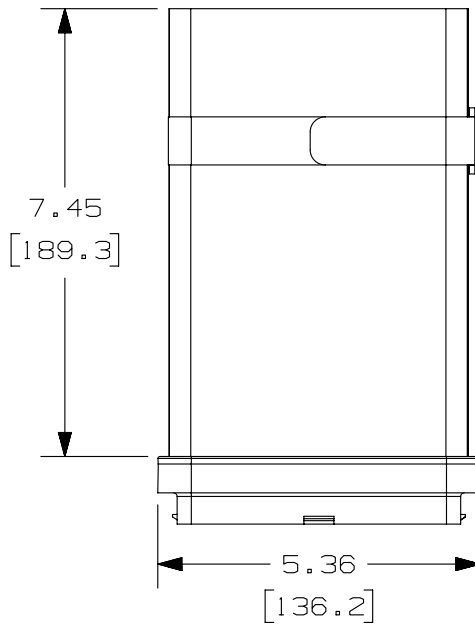
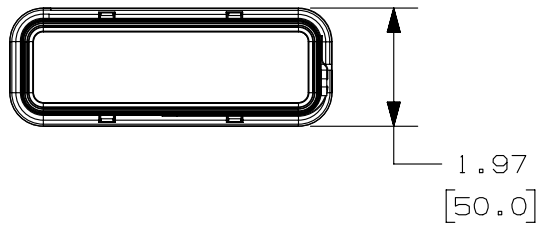


THIS COPY IS PROVIDED ON A RESTRICTED BASIS AND IS NOT TO BE USED IN ANY WAY DETRIMENTAL TO THE INTERESTS OF PANDUIT CORP.

PANDUIT PART NUMBER	WEIGHT
CTGN1X5	.08 LBS/EACH 34.3 GRAMS/EACH

NOTES:

1. FOR USE WITH NET-ACCESS CABINETS
2. USED TO SEAL OFF 1.5" X 5" CABINET TOP OPENINGS WHEN CABLES ARE ROUTED THROUGH THE TOP OF THE CABINET.
3. REQUIRES THAT PANDUIT PART NUMBER CTCN1X5B TO BE INSTALLED INTO 1.5" X 5" CABINET TOP OPENING PRIOR TO CTGN1X5 INSTALLATION.
4. FINISH COLOR: BLACK
5. DIMENSION IN PARENTHESES ARE IN METRIC

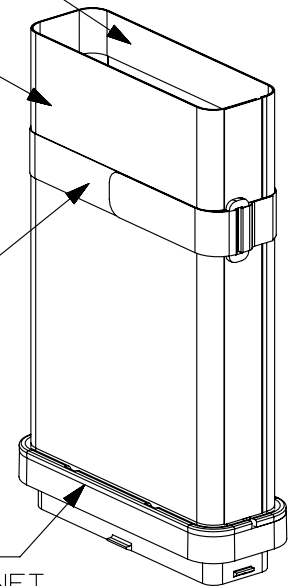


HOOK AND LOOP
SEALING STRIP

AIRTIGHT
FABRIC SLEEVE

ULTRA CINCH
TIE

SNAP-IN BEZEL
(FOR 1.5" X 5" CABINET
TOP OPENING)



REV	DATE	BY	CHK	APR	DESCRIPTION	ECN
1	03-11-13	SSP	DWR	RN	RELEASED TO PRODUCTION	12D289AA-DC
R	08-02-12	SSP	DWR		DRAWING RELEASED	

TITLE		1.5" X 5" COOL BOOT CABINET TOP AIR SEALING FITTING (CTGN1X5)	
ITEM REVISION NAME		CUSTOMER DRAWING	
DATASET FILE NAME		12D289AA-DC/00B CTGN1X5	
UNLESS OTHERWISE SPECIFIED, DIMENSIONAL TOLERANCES ARE: IN [mm]		MATERIAL:	
.X ± .XX ± .03 [.8]		SEE NOTES ABOVE	
.XXX ± ANGLES ±		DRAWING NUMBER:	
THIRD ANGLE PROJECTION		12D289AA-DC	
DRAWN BY	DATE	CHK	SCALE
SSP	8-02-12	DWR	NONE
SHT 1 OF 1		SIZE	
		A	

Mouser Electronics

Authorized Distributor

Click to View Pricing, Inventory, Delivery & Lifecycle Information:

[Panduit:](#)

[CTGN1X5](#)