

2

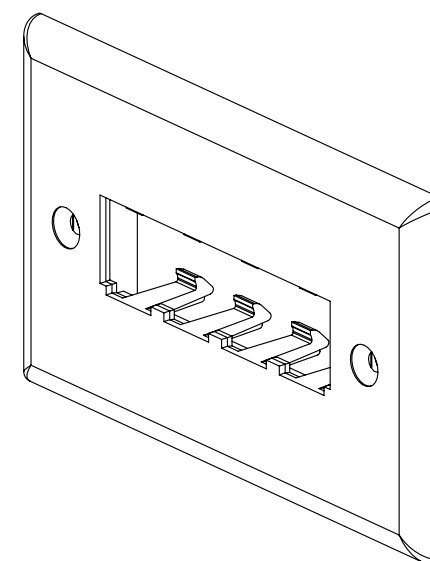
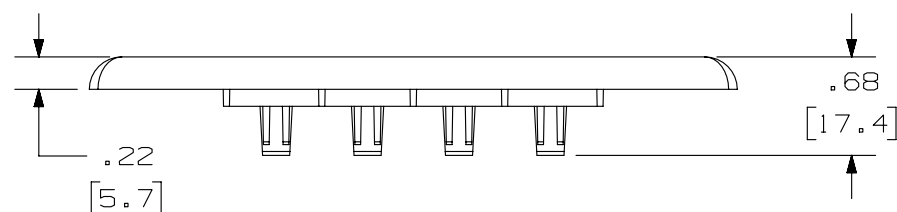
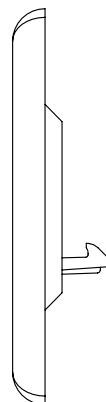
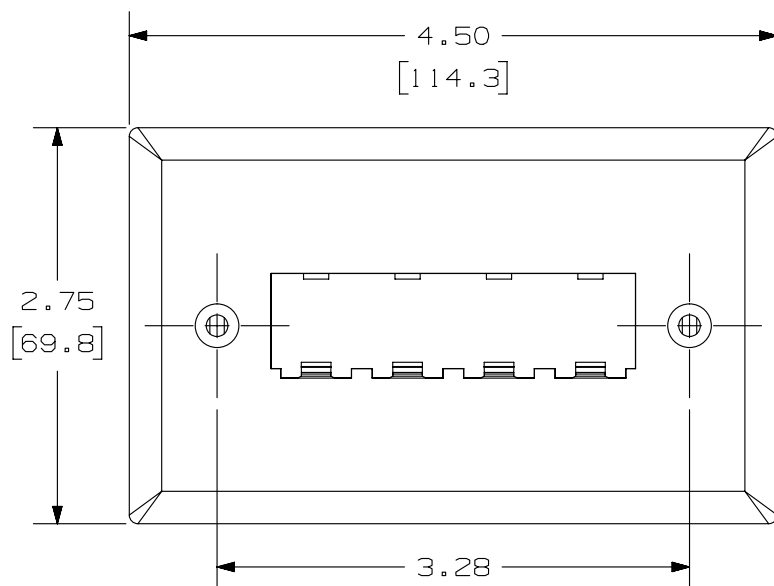
1

THIS COPY IS PROVIDED ON A RESTRICTED BASIS AND IS NOT TO BE USED IN ANY WAY DETRIMENTAL TO THE INTERESTS OF PANDUIT CORP.

| PANDUIT PART NO. | WEIGHT |
|---------------------|---------------------------------|
| CFPH4** | .47 LB/10 PCS (214 G/10 PCS) |

NOTES:

1. SEE CURRENT CATALOG FOR ADDITIONAL PART NUMBER SUFFIXES TO INDICATE COLOR AND OR PACKAGE QUANTITY.
2. DIMENSIONS IN [] ARE IN METRIC.
3. PART INCLUDES:
1- FACEPLATE
2- MOUNTING SCREWS



| | | | |
|--|--------|---|-------|
| PART NUMBER | | CFPH4** | |
| TITLE | | MINI-COM 4 POSITION HORIZONTAL CLASSICE SERIES FACEPLATE | |
| ITEM REVISION NAME | | CUSTOMER DRAWING | |
| DATASET FILE NAME | | PANDUIT | |
| D35544CS/00 D35544CS_DC/00C | | MATERIAL: ABS | |
| UNLESS OTHERWISE SPECIFIED, DIMENSIONAL TOLERANCES ARE: IN [mm] .X ± .XXX ± .010 [.3] .XX ± .03 [.8] ANGLES ± | | DRAWING NUMBER: 35544 - 41 | |
| THIRD ANGLE PROJECTION | | SHT 1 OF 1 | |
| DRAWN BY | DATE | CHK | SCALE |
| RCA | 4-3-97 | HIW | NONE |
| REV | | SIZE | |
| A | | A | |

| 3 | 4/14/14 | JSP | REFR | MMR | REVISED AND REDRAWN, PREVIOUS REVISIONS HAVE BEEN OMITTED. | 35544-41 |
|-----|---------|-----|------|-----|---|----------|
| REV | DATE | BY | CHK | APR | DESCRIPTION | ECN |

2

1

B

A



B

A



B

A



B

A



B

A



B

A



B

A



B

A



B

A



B

A



B

A



B

A



B

A



B

A



B

A



B

A



B

A



B

A



B

A



B

A



B

A



B

A



B

A



B

A



B

A



B

A



B

A



B

A



B

A



B

A



B

A



B

A



B

A



B

A



B

A



B

A



B

A



B

A



B

A



B

A



B

A



B

A



B

A



B

A



B

A



B

A



B

A



B

A



B

A



B

A



B

A



B

A



B

A



B

A



B

A



B

A



B

A



B

A



B

A



B

A



B

A



B

A



B

A



B

A



B

A



B

A



B

A



B

A



B

A



B

A



B

A



B

A



B

A

Mouser Electronics

Authorized Distributor

Click to View Pricing, Inventory, Delivery & Lifecycle Information:

Panduit:

[CFPH4AW](#) [CFPH4IG](#) [CFPH4BL](#) [CFPH4WH](#) [CFPH4EI](#)