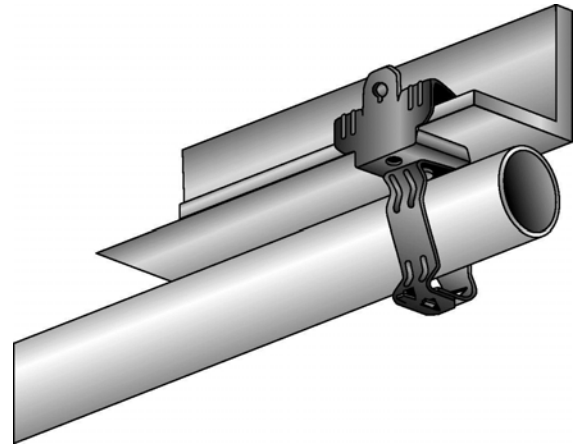
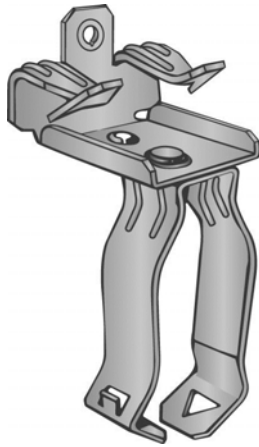


Part Number: P6M58

Product Description: BEAM CLAMP FOR 5/16" - 1/2" FLANGE WITH 3/8" SNAP CLOSED CONDUIT CLIP



Material Specifications

Type: Assembly

Finish: Assembly

Color: Various

Function Specifications

Compatible Wires and Cables

AC/MC CABLE (OD):

Drop Wire:

Plain Rod (in):

Threaded Rods and Bolts

Tapped Holes: 1/4"-20 BACK OF BEAM CLAMP

Clearance Holes (in):

Threaded Rod Size (in):

Compatible Conduit

EMT Size (in): 3/8

Rigid/IMC (in): 3/8

Compatible Flanges and Studs

Flange Size (in): 5/16 to 1/2

Metal Stud Size (ins):

Static Load Rating

Vertical (lbs): 75

Horizontal (lbs):

Other

Codes and Regulatory

Regulatory
Certifications: UL/cUL

Country of Origin: US

Packaging

General Packaging: Cardboard Box

Box Size: 11 X 7.5 X 7.25

Pieces per Package: 100

Other Box Features:

Document Information

Created By: DBLA

Checked By: DJW

Approved By: KLN

Customer Specification #: C11167

Revision Level: 01

ECN #: GAECN01482

Date: 12/10/2013

Mouser Electronics

Authorized Distributor

Click to View Pricing, Inventory, Delivery & Lifecycle Information:

[Panduit:](#)

[P6M58](#)