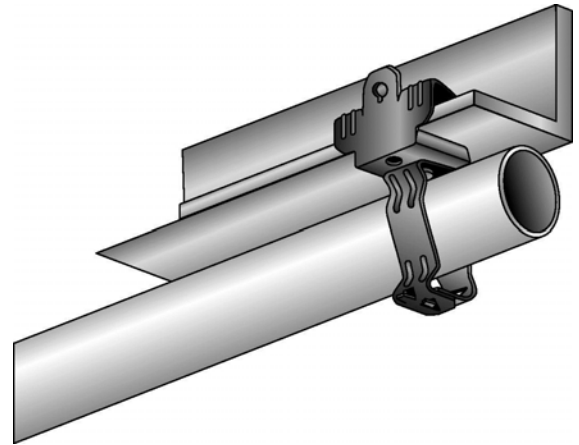
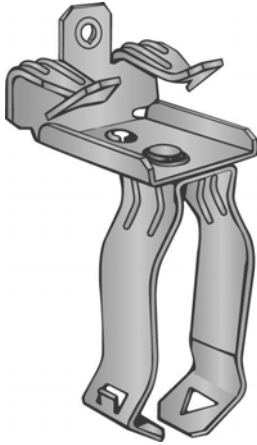


Part Number: P24M912

Product Description: BEAM CLAMP FOR 9/16" - 3/4" FLANGE WITH 1-1/2" SNAP CLOSED CONDUIT CLIP

**Material Specifications**

Type: Assembly

Finish: Assembly

Color: Various

**Function Specifications****Compatible Wires and Cables**

AC/MC CABLE (OD):

Drop Wire:

Plain Rod (in):


**Threaded Rods and Bolts**

Tapped Holes: 1/4"-20 BACK OF BEAM CLAMP

Clearance Holes (in):

Threaded Rod Size (in):


**Compatible Conduit**

EMT Size (in): 1-1/2

Rigid/IMC (in): 1-1/2


**Compatible Flanges and Studs**

Flange Size (in): 9/16 to 3/4

Metal Stud Size (ins):


**Static Load Rating**

Vertical (lbs): 75

Horizontal (lbs):


**Other**

--

**Codes and Regulatory**Regulatory  
Certifications: UL/cUL

Country of Origin: US

--

--

**Packaging**

General Packaging: Cardboard Box

Box Size: 17 X 13.25 X 10

Pieces per Package: 100

Other Box Features: Hand hole handles



**Document Information**

Created By: DBLA

Checked By: DJW

Approved By: KLN

Customer Specification #: C11174

Revision Level: 01

ECN #: GAECN01482

Date: 12/10/2013



# Mouser Electronics

Authorized Distributor

Click to View Pricing, Inventory, Delivery & Lifecycle Information:

[Panduit:](#)

[P24M912](#)