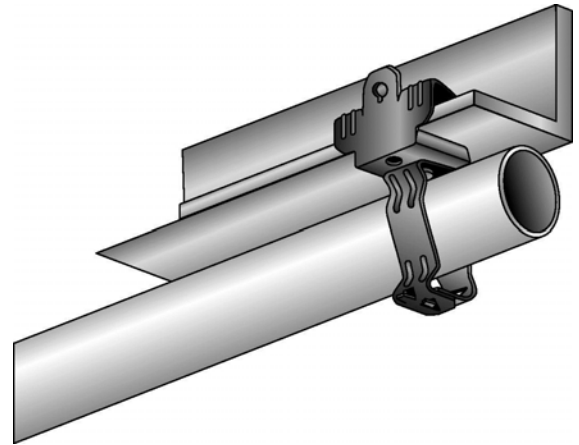
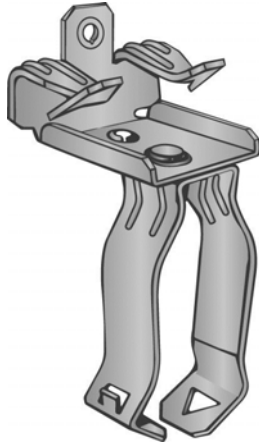


Part Number: P24M24

Product Description: BEAM CLAMP FOR 1/8" - 1/4" FLANGE WITH 1-1/2" SNAP CLOSED CONDUIT CLIP

**Material Specifications**

Type: Assembly

Finish: Assembly

Color: Various

Function Specifications**Compatible Wires and Cables**

AC/MC CABLE (OD):

Drop Wire:

Plain Rod (in):

Threaded Rods and Bolts

Tapped Holes: 1/4"-20 BACK OF BEAM CLAMP

Clearance Holes (in):

Threaded Rod Size (in):

Compatible Conduit

EMT Size (in): 1-1/2

Rigid/IMC (in): 1-1/2

Compatible Flanges and Studs

Flange Size (in): 1/8 to 1/4

Metal Stud Size (ins):

Static Load Rating

Vertical (lbs): 75

Horizontal (lbs):

Other

--

Codes and RegulatoryRegulatory
Certifications: UL/cUL

Country of Origin: US

--

--

Packaging

General Packaging: Cardboard Box

Box Size: 15 X 8.25 X 7.25

Pieces per Package: 100

Other Box Features:

Document Information

Created By: DBLA

Checked By: DJW

Approved By: KLN

Customer Specification #: C11152

Revision Level: 01

ECN #: GAECN01482

Date: 12/10/2013

Mouser Electronics

Authorized Distributor

Click to View Pricing, Inventory, Delivery & Lifecycle Information:

[Panduit:](#)

[P24M24](#)