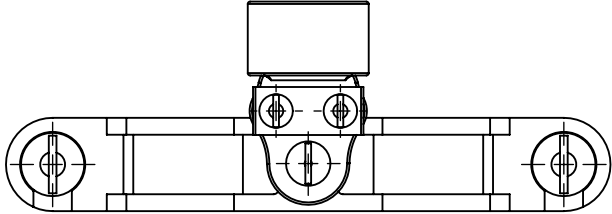
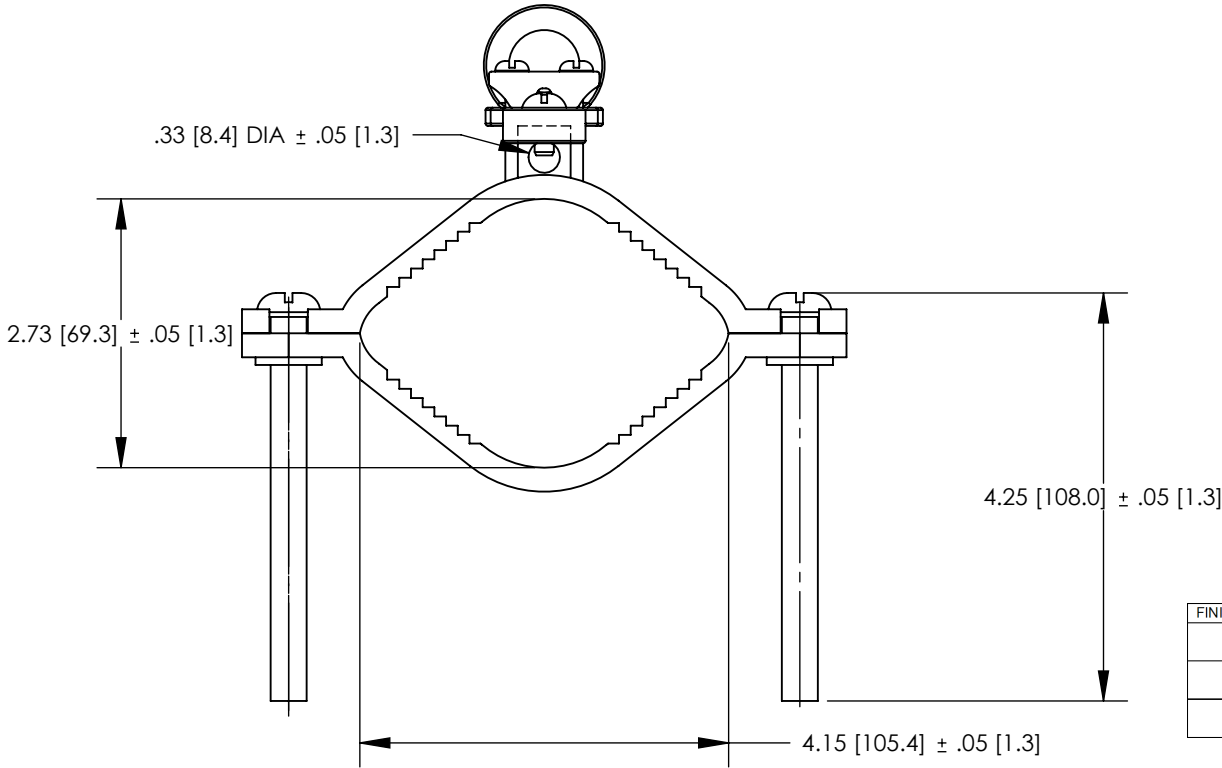


THIS COPY IS PROVIDED ON A RESTRICTED BASIS AND IS NOT TO BE USED IN ANY WAY DETRIMENTAL TO THE INTERESTS OF PANDUIT CORP.



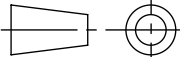
NOTES:

1. MATERIAL:
BODY - BRONZE (GUN METAL)
SCREW - STEEL, ZINC PLATED
2. PARTS ARE cULus LISTED TO UL467 AS
GROUNDING & BONDING EQUIPMENT.
3. SEE WWW.PANDUIT.COM FOR PART NUMBER
SUFFIX DESIGNATION FOR PACKAGE SIZE.



FINISHED PART NUMBER	DESCRIPTION	WATER PIPE	GROUNDING WIRE
GPCG2/0-4-12	GROUND CLAMP FOR RIGID CONDUIT 360 DEG HUB CONDUIT 1/2"	2-1/2" - 4"	10 - 2/0 STR
GPCG2/0-4-34	GROUND CLAMP FOR RIGID CONDUIT 360 DEG HUB CONDUIT 3/4"	2-1/2" - 4"	10 - 2/0 STR
GPCG3/0-4-1	GROUND CLAMP FOR RIGID CONDUIT 360 DEG HUB CONDUIT 1"	2-1/2" - 4"	10 - 3/0 STR

00	7/12	JHNU	SRBI	RGB	DRAWING RELEASED	10J018AP-JC
REV	DATE	BY	CHK	APR	DESCRIPTION	ECN

TITLE					BRONZE GROUND PIPE CLAMP - 2-1/2" - 4" CUSTOMER DRAWING	
ITEM REVISION NAME		10J018AP/00			<div>PANDUITTM</div>	
DATASET FILE NAME		10J018AP-JC/00.SLDDRW				
UNLESS OTHERWISE SPECIFIED, DIMENSIONAL TOLERANCES ARE: IN [mm]					MATERIAL	
<div>.X ± .XX ±</div> <div></div>					SEE NOTES	
THIRD ANGLE PROJECTION					DRAWING NUMBER	
DRAWN BY		DATE	CHK	SCALE	10J018AP-JC	
JHNU		7/12	SRBI	N/A	SHEET 1 OF 1	
					SIZE A	

Mouser Electronics

Authorized Distributor

Click to View Pricing, Inventory, Delivery & Lifecycle Information:

Panduit:

[GPCG2/0-4-12-E](#) [GPCG2/0-4-34-E](#)