

# Pan-Way® LD Surface Raceway System

## specifications

LD non-metallic series low voltage, one-piece hinged design, single channel surface raceway includes adhesive backing and is made of impact resistant material with a smooth finish that will not scratch, peel, or corrode. The raceway includes an assortment of bend radius and standard fittings that complement the offering to help route, protect, and conceal low voltage data, voice, and video cabling. LD raceway is available in three sizes and three standard colors that are optimized for use with the Panduit® Pan-Net® communication system.



## technical information

<b>Material:</b>	Rigid PVC
<b>Flammability:</b>	UL94V-0; FT4
<b>Voltage Rating:</b>	50V or less
<b>Capacity:</b>	Single channel
<b>Operating and Storage Temperature:</b>	0° to 50°C

## key features and benefits

<b>1" bend radius control fittings</b>	Cables in the raceway will satisfy the minimum 1" bend radius requirement, preventing the potential degradation of cable performance; meets TIA/EIA standards
<b>One-piece hinged design</b>	Cables can be laid into the raceway, speeding installation and preventing damage to cables
<b>Adhesive backing</b>	Full length adhesive strip allows easy tool free installation Please refer to part drawing for best practices of installation
<b>Available in different sizes &amp; lengths</b>	Accommodates varying cable types and capacities Available sizes - LD3, LD5, LD10; Available lengths - 6', 8', 10'
<b>Non-metallic construction</b>	Lightweight, reducing installer fatigue and labor required to install the raceway; solid color throughout will not chip, peel, rust or corrode; easy to cut with standard saws and saw blades, eliminating the need for special cutting devices
<b>Distinct colors</b>	Available in three standard colors- IW, EI, WH Raceway is field paintable to match walls and surrounding décor
<b>Full selection of fittings and surface mount boxes</b>	Wide variety of fittings and surface mount boxes available for various LD raceway applications

## applications

Pan-Way® LD Surface Raceways are designed to provide easy and economical solutions for routing any low voltage cable along smooth and clean perimeter walls,

baseboards or ceilings. This raceway is a perfect solution for schools, hospitals, offices, homes or anywhere a small, secure, low profile raceway is needed.

<b>LD Raceway</b>	
<b>Raceway:</b>	LD3IW**-A LD5IW**-A LD10IW**-A
<b>LD Raceway Fittings</b>	
<b>Coupler LD10:</b>	CF10IW-X
<b>Coupler LD3/LD5:</b>	CF*IW-E
<b>Inside corner:</b>	ICFC*IW-X
<b>Outside Corner LD10:</b>	OCFC10IW-X
<b>Bend Radius</b>	
<b>Outside Corner:</b>	OCFX*IW-X
<b>Right angle:</b>	RAFC*IW-X
<b>End cap LD10:</b>	ECF10IW-X
<b>End cap LD3/LD5:</b>	ECF*IW-E
<b>Tee:</b>	TFC*IW-X
<b>Drop ceiling/entrance end:</b>	DCF*IW-X
<b>Right angle/entrance end:</b>	RAEFXIW-X
<b>LD5 fire box adapter:</b>	FBA5IW-X
<b>LD Raceway Surface Mount Outlet/Junction Boxes</b>	
<b>Low Voltage</b>	
<b>Single gang, one-piece:</b>	JB1IW-A
<b>Single gang, one-piece, deep:</b>	JB1DIW-A
<b>Single gang, two-piece:</b>	JBX3510IW-A
<b>Power Rated</b>	
<b>Single gang, two-piece:</b>	JBP1IW
<b>Single gang, two-piece, deep:</b>	JBP1DIW
<b>Single gang, two-piece, extension:</b>	JBP1EIW
<b>Single gang, two-piece, intermediate:</b>	JBP1IIW
<b>Single gang, two-piece, snap on:</b>	JBP1FSIW
<b>Single gang, two-piece, round:</b>	RJBX3510IW
<b>Double gang, two-piece:</b>	JBP2IW
<b>Double gang, two-piece, deep:</b>	JBP2DIW
<b>Double gang, two-piece, divided:</b>	JBP2SIW
<b>Double gang, two-piece, snap on:</b>	JBP2FSIW

\*Insert raceway size of 3, 5, or 10

\*\*Insert raceway length of 6', 8', or 10'

All parts listed in Off White (IW) color.  
To order other colors, substitute IW in the part number with (EI) Electrical Ivory, or (WH) White.

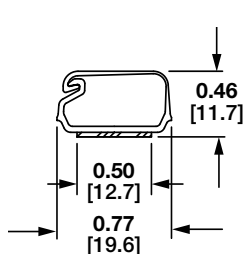
# Pan-Way® LD Surface Raceway System

## Wire Fill

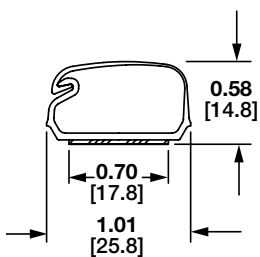
Raceway Type and Configuration	Fill Area (in²)	Electrical Cables			Data Grade Cables 24 AWG/UTP CM								Audio/Video		Fiber Optic Cable	
		14 AWG	12 AWG	10 AWG												
		THHN/T90			Cat. 5e - Plenum		Cat. 6		Cat. 6A		Cat. 6A (SD)		RG6		2 Strand	
		0.111	0.130	0.164	DIA = 0.193		DIA = 0.24		DIA = 0.30		DIA = 0.24		DIA = 0.275		DIA = 0.175	
		FILL			FILL		FILL		FILL		FILL		FILL		FILL	
		MAX	MAX	MAX	SPEC	MAX	SPEC	MAX	SPEC	MAX	SPEC	MAX	SPEC	MAX	SPEC	MAX
		(UL Temp Rise Test)			(40%)	(60%)	(40%)	(60%)	(40%)	(60%)	(40%)	(60%)	(40%)	(60%)	(40%)	(60%)
LD3	0.21	**	**	**	2	4	1	2	1	1	1	2	1	2	3	5
LD5	0.38	**	**	**	5	7	3	5	2	3	3	5	2	3	6	9
LD10	1.00	**	**	**	13	20	8	13	5	8	8	13	6	10	16	24

For all cable options please see the Raceway cable fill calculator on <https://www.panduit.com/en/support/tools1/calculators-and-design-tools.html>

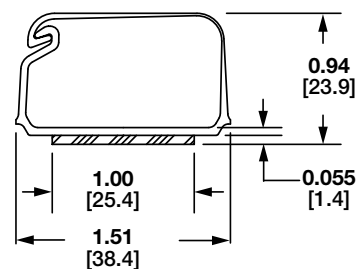
## LD Raceway



LD3



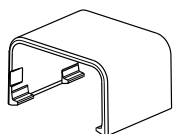
LD5



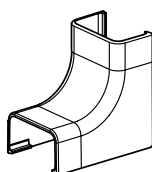
LD10

Dimensions are in inches. [Dimensions in brackets are metric].

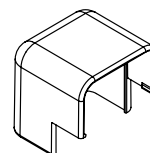
## Fittings



CF



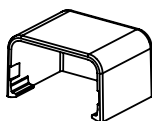
ICFC



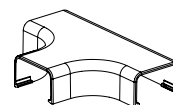
OCFC



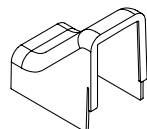
RAFC



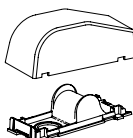
ECF



TFC



DCF



RAEFX



FBA

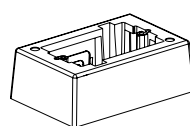
# Pan-Way® LD Surface Raceway System

## Compatible LD Raceway Surface Mount Outlet/Junction Boxes

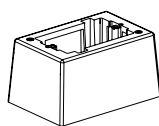
Low Voltage or Fiber Optic ONLY	
<b>JB1**-A</b>	Single gang one-piece outlet box with adhesive backing
<b>JB1D**-A</b>	Single gang one-piece deep outlet box with adhesive backing
<b>JBX3510**-A</b>	Single gang two-piece snap together outlet box with adhesive backing
Power, Low Voltage or Fiber Optic	
<b>RJBX3510**</b>	Single gang two-piece screw together round outlet box
<b>JBP1**</b>	Single gang two-piece screw together outlet box
<b>JBP1D**</b>	Single gang two-piece screw together deep outlet box
<b>JBP1E**</b>	Single gang two-piece screw together extension outlet box
<b>JBP1I**</b>	Single gang two-piece screw together intermediate outlet box
<b>JBP2**</b>	Double gang two-piece screw together deep outlet box
<b>JBP2S**</b>	Double gang two-piece screw together divided outlet box
<b>JBP2D**</b>	Double gang two-piece screw together deep outlet box
<b>JBP2FS**</b>	Fast-Snap™ Double Gang Power Rated Two-Piece Snap Together Outlet Box

\*\* = Available colors: Off White (IW), Electrical Ivory (EI), White (WH).

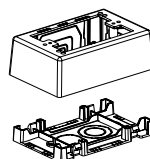
## Surface Mount Outlet/Junction Boxes



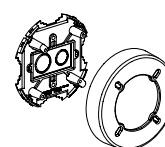
**JB1**



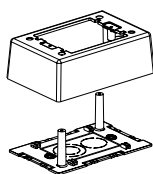
**JB1D**



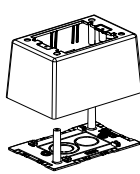
**JBX3510**



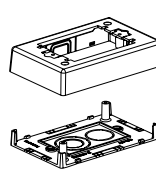
**RJBX3510**



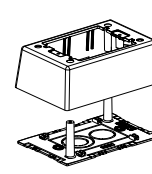
**JBP1**



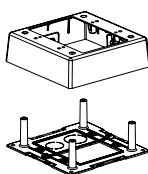
**JBP1D**



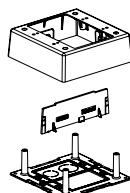
**JBP1E**



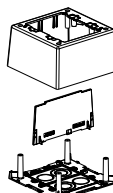
**JBP1I**



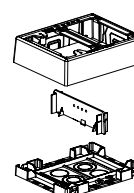
**JBP2**



**JBP2S**



**JBP2D**



**JBP2FS**

### WORLDWIDE SUBSIDIARIES AND SALES OFFICES

PANDUIT US/CANADA  
Phone: 800.777.3300

PANDUIT EUROPE LTD.  
London, UK  
Phone: 44.20.8601.7200

PANDUIT SINGAPORE PTE. LTD.  
Republic of Singapore  
Phone: 65.6305.7575

PANDUIT JAPAN  
Tokyo, Japan  
Phone: 81.3.6863.6000

PANDUIT LATIN AMERICA  
Guadalajara, Mexico  
Phone: 52.33.3777.6000

PANDUIT AUSTRALIA PTY. LTD.  
Victoria, Australia  
Phone: 61.3.9794.9020

For a copy of Panduit product warranties, log on to [www.panduit.com/warranty](http://www.panduit.com/warranty)

**PANDUIT®**

For more information  
Visit us at [www.panduit.com](http://www.panduit.com)  
Contact Customer Service by email: [cs@panduit.com](mailto:cs@panduit.com)  
or by phone: 800.777.3300

© 2022 Panduit Corp.  
ALL RIGHTS RESERVED.  
Printed in the U.S.A.  
SRSP21--WW-ENG  
4/2022

# Mouser Electronics

Authorized Distributor

Click to View Pricing, Inventory, Delivery & Lifecycle Information:

## Panduit:

[CFX3EI-X](#) [CFX3WH-X](#) [RAFC5IW-X](#) [OCFC10IW-X](#) [ICFC3IW-X](#) [ICFC3EI-X](#) [ICFC3WH-X](#) [CFX3IW-X](#) [RAFC10IW-X](#)  
[TFC3WH-X](#) [TFC10IW-X](#) [RFX103WH-X](#) [RAEFXWH-X](#) [RAEFXEI-X](#) [RAEFXIW-X](#) [TFC5IW-X](#) [RAFC3EI-X](#)  
[RAFC3IW-X](#) [RAFC3WH-X](#) [TFC3EI-X](#) [TFC3IW-X](#)