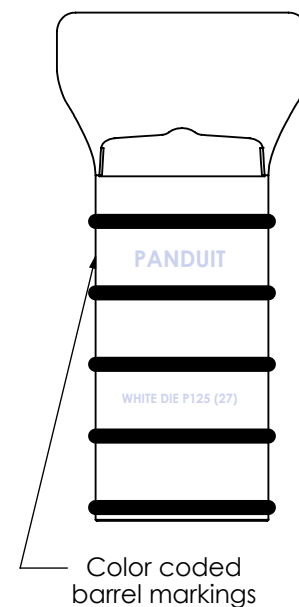
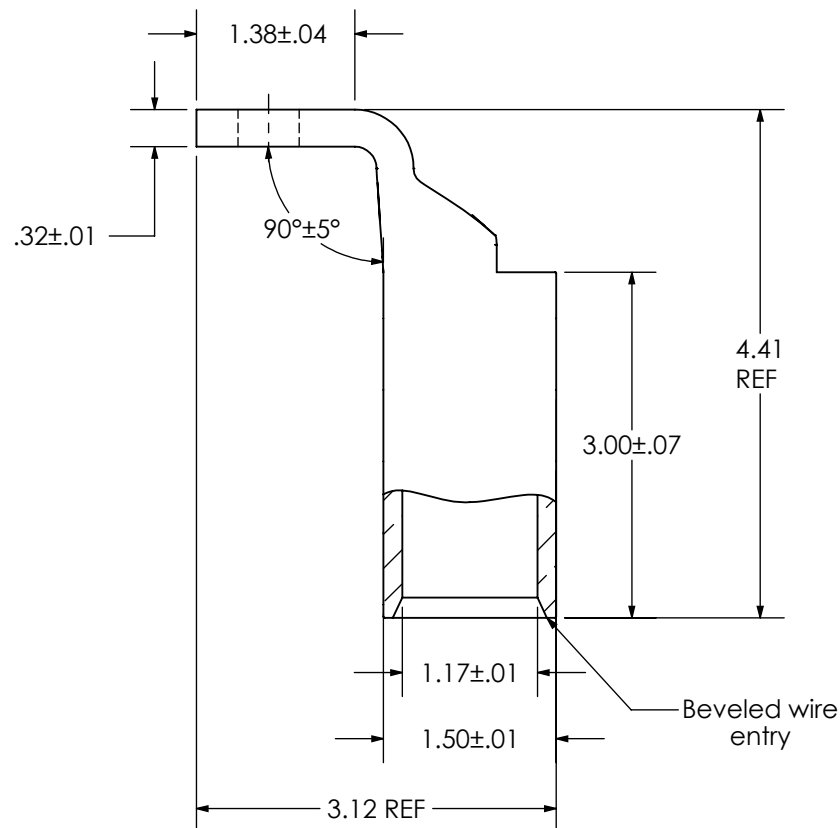
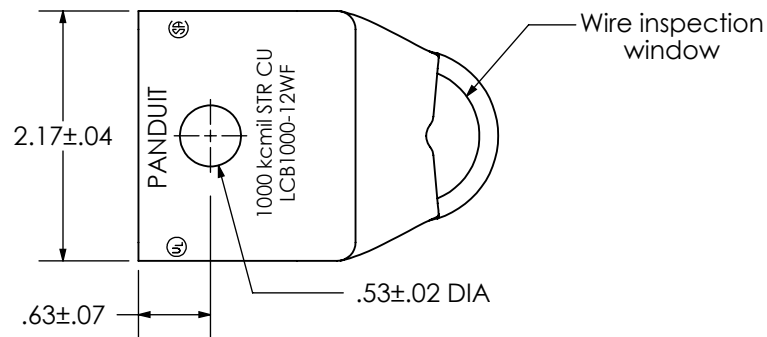


THIS COPY IS PROVIDED ON A RESTRICTED BASIS AND IS NOT TO BE USED IN ANY WAY DETRIMENTAL TO THE INTERESTS OF PANDUIT CORP.

| | |
|--|--|
| Material | High Conductivity Seamless Copper Tube |
| Plating | Electro-Tin |
| Wire Size | 1000 kcmil |
| Wire Type | Stranded Copper; Class B: Compact, Compressed or Concentric, Class C: Concentric |
| Wire Strip Length | 3-1/16 in. |
| Stud Size | 1/2 in. |
| UL Listed Wire Connector | Yes, for applications up to 35kv. Consult cable manufacturer for voltage stress relief instructions with applications greater than 2000 volts. |
| UL Temperature Rating | 90° C |
| C.S.A Certified Wire Connector | Yes |
| Panduit Color Code on Barrel | WHITE |
| Panduit Die Index No. on Barrel | P125 |
| Alternate Industry Die Index No. () on Barrel | (27) |



LISTED
Wire Connector



| | | | | | |
|-----|------|------|------|-------------|-----|
| | | | | | |
| 00 | 4/17 | JHNU | JHNU | | |
| REV | DATE | BY | CHK | DESCRIPTION | ECN |

| | |
|--|--|
| PANDUIT CORP. TINLEY PARK, ILLINOIS | |
| LCB1000-12WF-3 Copper Lug - One-Hole, Long Barrel with Window, 90° Angle Tongue | |
| SCALE N/A | DRAWING NO / CAD FILE LCB1000-12WF-CUST |

Mouser Electronics

Authorized Distributor

Click to View Pricing, Inventory, Delivery & Lifecycle Information:

Panduit:

[LCB1000-12WF-3](#)