

GRIPPER REPLACEMENT KIT FOR PPTS
INSTALLATION INSTRUCTIONS

© Panduit Corp. 2016

The KPTSG Gripper Replacement Kit replaces the current gripper in the event of reduced performance or excessive wear caused by extended usage. Follow the step-by-step instructions below.

CONTENTS:

ITEM	QTY.	DESCRIPTION
22	1	Gripper Housing Assembly
14	1	Screw
	1	Removable Threadlocker (for MSDS sheet, see www.loctite.com)
	1	PVC Tubing

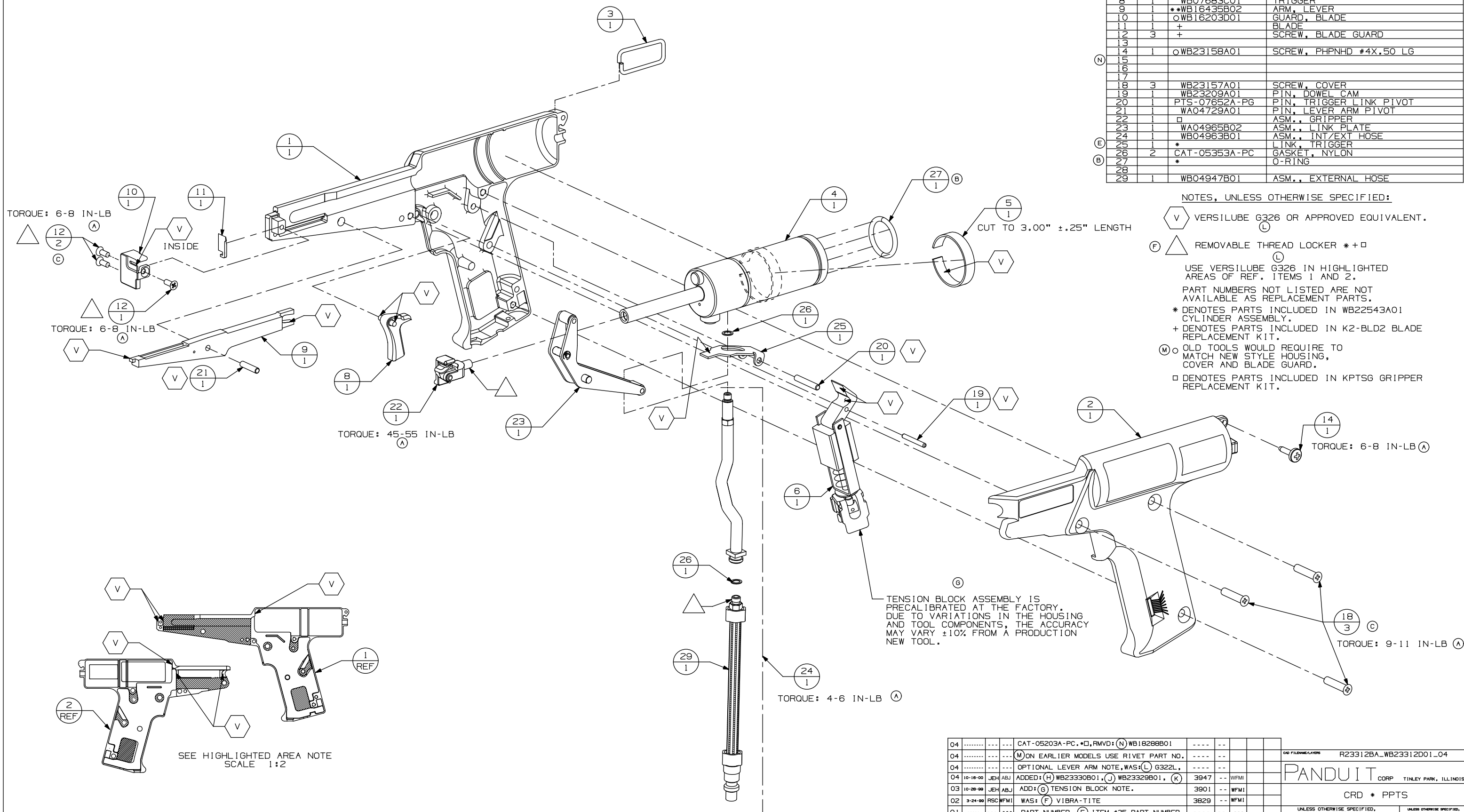
REPLACING THE GRIPPER HOUSING ASSEMBLY *(Refer to Customer Repair Drawing, WB23312D01 which is on reverse side.)*



WARNING: **Always** disconnect the air source from the tool before disassembly of the tool. **Never** connect the air source to the tool or actuate the tool until the tool is fully reassembled.

1. Remove and retain the screw from the back end of the tool. Reduce tension on the tool by flipping the selector knob to the MIN setting and turning the selector knob counterclockwise until the knob loosens.
2. Place the tool on a table with the right side of the tool face down and the nose end to the left. Remove the three (3) housing screws using a Phillips screwdriver, and lift off the housing cover.
3. Remove the lever arm pivot pin and the trigger link pin. Carefully lift out the lever arm and the cylinder/link plate assembly.
4. Slide the PVC tubing (included) over the gripper housing assembly and onto the cylinder shaft. Carefully grip the cylinder shaft at the tubing protected area in a brass jaw vise (to prevent damage to the shaft surface). Grip the shaft as close to the gripper housing assembly as possible. Unscrew the gripper housing assembly using a 5/16” open-end wrench.
5. Apply Removable Threadlocker (included) on the new gripper housing assembly threads. Tighten the new gripper assembly on the cylinder shaft and remove the assembly from the vise. Remove the PVC tubing from the cylinder shaft and discard the tubing.
6. Carefully position the cylinder/link plate assembly in the tool. Position the trigger link and install the trigger link pin. Position the lever arm and install the lever arm pivot pin. Position the trigger and replace the housing cover. Fasten cover using the three (3) housing screws and tighten until snug.
7. Replace the screw at the back end of the tool. Readjust tool tension to the desired setting.

	ITEM	QTY	PART NUMBER	DESCRIPTION
(H)	1	1	OWB23330B01	SERVICE SUB-ASSY, HOUSING PPTS
(J)	2	1	OWB23329B01	SERVICE SUB-ASSY, COVER PPTS
(D)	3	1	PTS-04782A-PW	HOOK
	4	1	*	ASM., CYLINDER
	5	1	PTS-04771A-PX	STRIP, BEARING
	6	1	WB24126B01	ASM., TENSION BLOCK
	7			
	8	1	WB07683C01	TRIGGER
	9	1	**WB16435B02	ARM, LEVER
	10	1	OWB16203D01	GUARD, BLADE
	11	1	+	BLADE
	12	3	+	SCREW, BLADE GUARD
	13			
(N)	14	1	OWB23158A01	SCREW, PHPNHD #4X.50 LG
	15			
	16			
	17			
	18	3	WB23157A01	SCREW, COVER
	19	1	WB23209A01	PIN, DOWEL CAM
	20	1	PTS-07652A-PG	PIN, TRIGGER LINK PIVOT
	21	1	WA04729A01	PIN, LEVER ARM PIVOT
	22	1	□	ASM., GRIPPER
	23	1	WA04965B02	ASM., LINK PLATE
(E)	24	1	WB04963B01	ASM., INT/EXT HOSE
	25	1	*	LINK, TRIGGER
(B)	26	2	CAT-05353A-PC	GASKET, NYLON
	27		*	O-RING
	28			
	29	1	WB04947R01	ASM., EXTERNAL HOSE

[illegible]

Mouser Electronics

Authorized Distributor

Click to View Pricing, Inventory, Delivery & Lifecycle Information:

Panduit:

KPTSG