

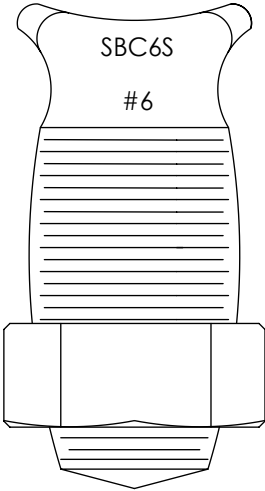
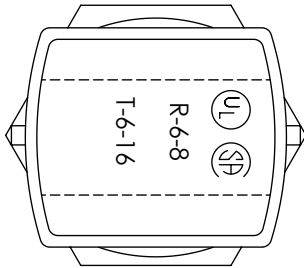
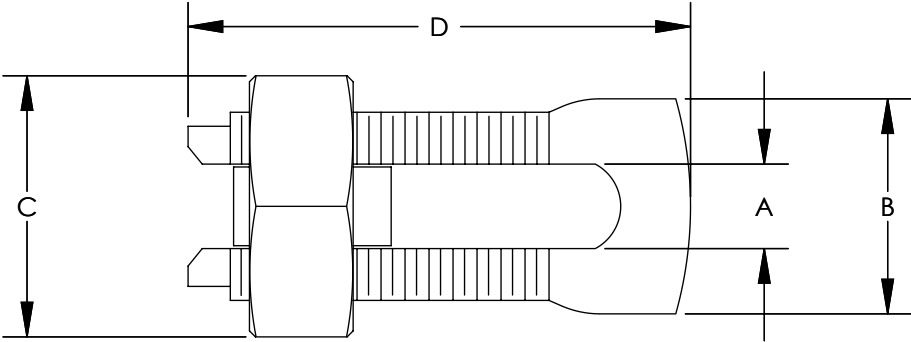
THIS COPY IS PROVIDED ON A RESTRICTED BASIS AND IS NOT TO BE USED IN ANY WAY DETRIMENTAL TO THE INTERESTS OF PANDUIT CORP.



NOTES:

1. HIGH STRENGTH ELECTROLYTIC  
COPPER HIGHLY RESISTANT TO  
CORROSION AND SEASON CRACKING.
2. FOR COPPER AND COPPERWELD  
WIRES ONLY.
3. \*CONNECTOR CAN BE USED WITH  
3 WIRES, BUT IS NOT CSA APPROVED  
WITH 3 WIRES.
4. \*\*THE CONDUCTOR SIZES SHOWN ARE FOR  
EQUAL RUN AND TAP COMBINATIONS FOR  
BOTH SOLID AND STRANDED UNLESS OTHERWISE  
LISTED.
5. PARTS ARE UL LISTED TO UL467 AND UL486. PARTS  
ARE CSA CERTIFIED.



CATALOG NUMBER	COPPER CONDUCTOR			APPROXIMATE DIMENSIONS - INCHES				INSTALLATION TORQUE
	RANGE OF EQUAL RUN & TAP		MIN. TAP WITH ONE MAX. RUN					
	MIN.	MAX.		A	B	C	D	
SBC8-C	10 STR	8 STR	16 STR	0.14	0.39	0.55	0.86	80
SBC6S-C	8 STR	6 STR	16 STR	0.16	0.41	0.62	0.95	165
*SBC6SL-C	8 STR	6 STR	16 STR	0.17	0.41	0.63	1.10	165
SBC4S-C	8 STR	6 STR	14 STR	0.21	0.45	0.69	0.98	165
*SBC4SL-C	8 STR	6 STR	14 STR	0.22	0.45	0.69	1.30	165
SBC3-C	8 STR	4 STR	14 STR	0.27	0.58	0.81	1.16	275
SBC2-C	6 STR	2 STR	14 STR	0.31	0.59	0.86	1.23	275
SBC1/0-L	4 STR	1/0 STR	14 STR	0.37	0.75	0.93	1.55	385
SBC2/0-Q	2 STR	2/0 STR	14 STR	0.42	0.79	1.05	1.72	385
SBC3/0-Q	1 STR	3/0 STR	8 STR	0.53	0.95	1.24	2.07	500
SBC250-Q	1 STR	250 kcmil	8 STR	0.58	1.03	1.36	2.09	650
SBC350-1	2/0 STR	350 kcmil	1/0 STR	0.70	1.16	1.48	2.42	650
SBC500-1	300 kcmil	500 kcmil	2/0 STR	0.81	1.33	1.74	2.83	825



							TITLE SBC SERIES - COPPER SPLIT BOLT CONNECTOR CUSTOMER DRAWING							
							ITEM REVISION NAME N10850BM-C41512/07							
							DATASET FILE NAME C41512/07.SLDDRW							
							UNLESS OTHERWISE SPECIFIED, DIMENSIONAL TOLERANCES ARE: IN [mm]				MATERIAL  SEE NOTES			
07	10/15	JHNU	JHNU	RGB	REVISED MARKING LOCATION ADDED NOTE TO SPECIFY PARTS ARE UL 486 AND UL467	N10850BM-C41512	<div><div><div>.X ± .XX ±</div><div></div></div><div>THIRD ANGLE PROJECTION</div></div>							
06	10/13	JHNU	JHNU	RGB	REVISED MAX RUN & TAP FOR SBC6S-C: 6 STR WAS 6 SOL	N10850BM-C41512								
05	3/13	JHNU	JHNU	RGB	REVISED TITLE BLOCK	N10850BM-C41512					DRAWING NUMBER C41512			
REV	DATE	BY	CHK	APR	DESCRIPTION	ECN	DRAWN BY JHNU	DATE 3/06	CHK JAC	SCALE NONE	SHEET 1 OF 1			SIZE B

# Mouser Electronics

Authorized Distributor

Click to View Pricing, Inventory, Delivery & Lifecycle Information:

Panduit:

[SBC4SL-C](#) [SBC6SL-C](#) [SBC8-C](#) [SBC3-C](#) [SBC6S-C](#) [SBC250-Q](#) [SBC3/0-Q](#) [SBC350-1](#) [SBC2/0-Q](#)