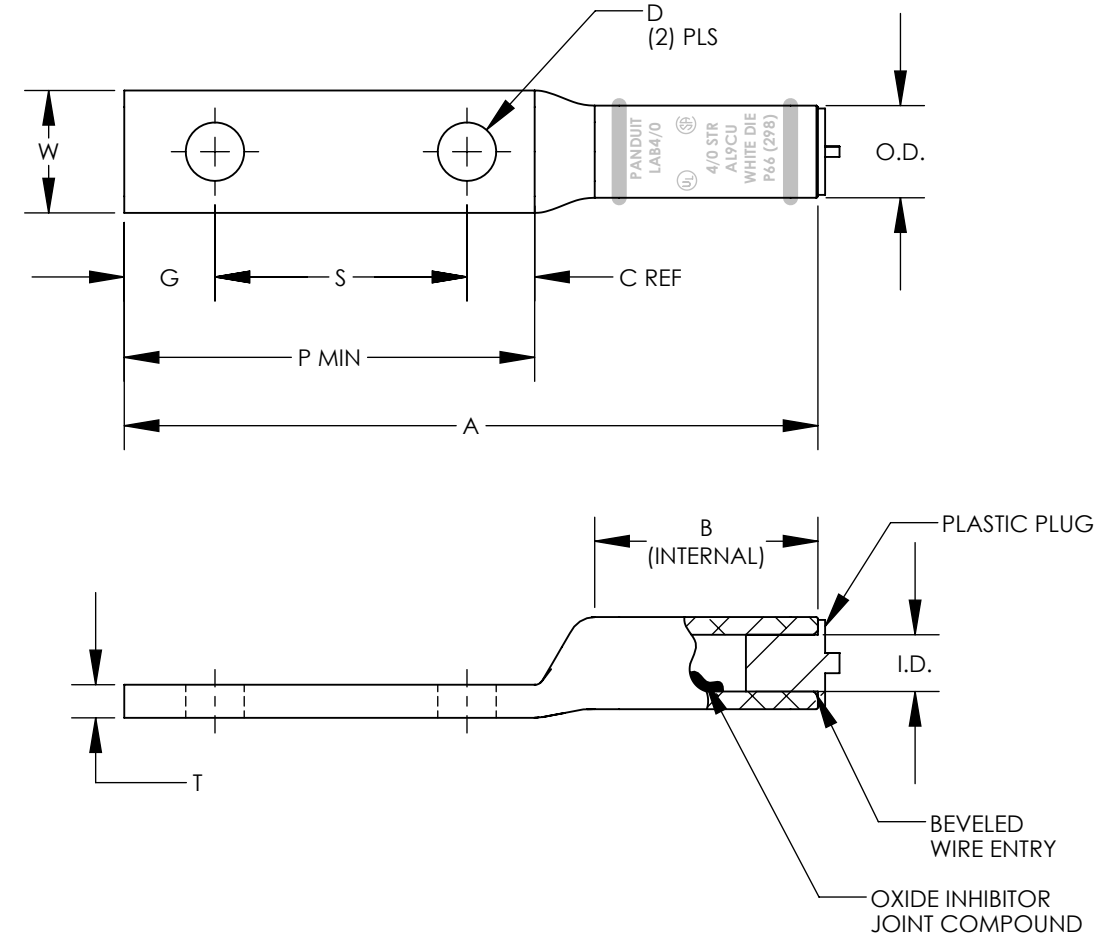


PANDUIT PART NUMBER	CONDUCTOR SIZE	STUD SIZE	OVERALL LENGTH "A" +/- .12	BARREL LENGTH "B" MIN	BARREL		TONGUE WIDTH "W" +/- .060	TONGUE THICKNESS "T" +/- .020	TONGUE LENGTH "P" MIN	HOLE OFFSET "G" +/- .031	STUD HOLE DIA "D" +/- .02	HOLE SPACING "S" +/- .04	WRENCH CLEARANCE "C" REF	WIRE STRIP LENGTH	PANDUIT DIE COLOR CODE PANDUIT DIE INDEX NUMBER (BURNDY DIE INDEX NUMBER)
					I.D. +/- .010	O.D. +/- .010									
LAB1/0-38-X LAB1/0-12-X	# 1/0 AWG	3/8" 1/2"	5.39	1.50	0.39	0.64	0.88	0.23	3.25	0.63	0.41 0.53	1.75	0.87	1-9/16"	TAN DIE P50 (296)
LAB2/0-12-5	# 2/0 AWG	1/2"	5.56	1.50	0.44	0.69	0.94	0.25	3.25	0.63	0.53	1.75	0.87	1-9/16"	OLIVE DIE P54 (297)
LAB3/0-12-5	# 3/0 AWG	1/2"	5.56	1.55	0.48	0.76	1.03	0.27	3.25	0.63	0.53	1.75	0.87	1-9/16"	RUBY DIE P60 (467)
LAB4/0-12-5R	# 4/0 AWG	1/2"	5.94	1.75	0.55	0.88	1.19	0.31	3.38	0.63	0.53	1.75	1.00	1-3/4"	WHITE DIE P66 (298)
LAB250-12-5	250 kcmil	1/2"	6.05	2.00	0.59	0.91	1.26	0.31	3.38	0.63	0.53	1.75	1.00	1-3/4"	RED DIE P71 (324)



NOTES:

1. MATERIAL: SEAMLESS ALUMINUM TUBING, TIN PLATED
2. BARREL COLOR CODED WITH DIE SET INDEX NUMBER
3. FOR STRANDED ALUMINUM AND COPPER WIRE
4. UL LISTED & CSA CERTIFIED TEMPERATURE RATED 90° C (AL9CU)
5. UL LISTED & CSA CERTIFIED VOLTAGE RATING 35 KV
6. ALL DIMENSIONS IN INCHES



							TITLE
06	12/15	JHNU	JHNU	RGB	REVISED W DIM FOR LAB1/0: 0.88 WAS 0.86 REVISED T DIM FOR LAB250: 0.31 WAS 0.33 REVISED P DIM FOR LAB250: 3.38 WAS 3.11 REVISED C DIM FOR LAB250: 1.00 WAS 0.73	N41153BA-C41153	LAB SERIES 1/0-250kcmil ALUMINUM LUGS CUSTOMER DRAWING
05	11/15	JHNU	JHNU	RGB	REVISED OVERALL LENGTH "A" FOR LAB250-12-5: 6.05 WAS 5.28	N41153BA-C41153	ITEM REVISION NAME N41153BA-C41153/06
04	8/15	JHNU	JHNU	RGB	ADDED "D" DIMENSION	N41153BA-C41153	DATASET FILE NAME C41153/06.SLDDRW
03	3/15	JHNU	JHNU	RGB	REVISED DIMENSIONS, REVISED NOTES ADDED BARREL MARKINGS ADDED COLOR CODE/DIE INDEX NUMBER REMOVED LAB4/0-12-5, ADDED LAB4/0-12-5R, LAB1/0-12-X	N41153BA-C41153	UNLESS OTHERWISE SPECIFIED, DIMENSIONAL TOLERANCES ARE: IN [mm] .X ± .XXX ± .XX ± ANGLES ±
02	3/13	JHNU	JHNU	RGB	REVISED TITLE BLOCK CONVERTED TO SOLIDWOKRS	N41153BA-C41153	THIRD ANGLE PROJECTION DRAWN BY MS DATE 4/95 CHK SCALE NONE
REV	DATE	BY	CHK	APR	DESCRIPTION	ECN	MATERIAL SEE NOTES
							DRAWING NUMBER C41153
							SHEET 1 OF 1
							SIZE B

Mouser Electronics

Authorized Distributor

Click to View Pricing, Inventory, Delivery & Lifecycle Information:

Panduit:

[LAB2/0-12-5](#) [LAB4/0-12-5](#)