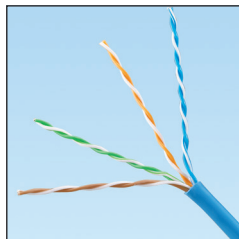


# TX6™ Category 6 U/UTP Copper Cable

## specifications

Category 6 cable shall meet ANSI/TIA-568-C.2 Category 6 component standard. The conductors shall be 23 AWG construction with FEP/polyolefin (CMP) or polyolefin (CMR) insulation. The copper conductors shall be twisted in pairs and covered by a low smoke, flame-retardant (CMP) PVC jacket or a flame-retardant (CMR) PVC jacket.



## technical information

<b>Electrical performance:</b>	Certified channel performance in a 4-conductor configuration up to 100 meters and meets ANSI/TIA-568-C.2 Category 6 standard at swept frequencies up to 250MHz  Certified component performance up to 100 meters and meets the component requirements of ANSI/TIA-568-C.2 Category 6 component standard at swept frequencies up to 250 MHz
<b>Conductors/insulators:</b>	Plenum – 23 AWG solid copper covered by FEP/polyolefin insulation Riser – 23 AWG solid copper covered by polyolefin insulation
<b>Flame rating:</b>	Plenum – NFPA 262 Riser – UL1666
<b>PoE compliance:</b>	Meets IEEE 802.3af and IEEE 802.3at for PoE applications
<b>Installation tension:</b>	25 lbf (110N) maximum
<b>Temperature rating:</b>	32°F to 122°F (0°C to 50°C) during installation -4°F to 167°F (-20°C to 75°C) during operation (Riser) -4°F to 167°F (-20°C to 75°C) during operation (Plenum)
<b>Cable jacket:</b>	Plenum – low smoke, flame-retardant PVC Riser – flame-retardant PVC
<b>Cable diameter:</b>	Plenum – 0.224 in. (5.7mm) nominal Riser – 0.210 in. (5.3mm) nominal
<b>Cable weight:</b>	Plenum – 29 lbs./1000 ft. (13 kg/305m) Riser – 22 lbs./1000 ft. (10 kg/305m)
<b>Packaging:</b>	1000 ft. (305m) in an easy payout carton Package tested to ISTA Procedure1A

## key features and benefits

<b>Third party tested</b>	Cable has been tested as part of the Category 6 UTP Copper Cabling System by an independent laboratory and complies with the electrical channel requirements of the following standard: ANSI/TIA-568-C.2 Category 6
<b>Descending length cable markings</b>	Easy identification of remaining cable reduces installation time and cable scrap
<b>Tested beyond the standards</b>	Cable has been characterized to 350 MHz, 100 MHz above the standard
<b>Easy payout carton</b>	Ensures proper performance and provides quick installation

## applications

Interoperable and backward compatible, the Panduit TX6™ Cabling System provides design flexibility to protect network investments well into the future. With certified performance to the ANSI/TIA-568-C.2 Category 6 and ISO 11801 Class E standards, this system will support the following applications:

- Ethernet 10BASE-T, 100BASE-T (Fast Ethernet), 1000BASE-T (Gigabit Ethernet), 10GBASE-T (10 Gigabit Ethernet over limited distances as specified in the industry 10GBASE-T standards)
- 155 Mb/s ATM, 622 Mb/s ATM, 1.2 Gb/s ATM
- Token Ring 4/16

**www.panduit.com**

### Category 6 U/UTP Copper Cable

<b>Plenum:</b>	PUP6C04*-U
<b>Riser:</b>	PUR6C04*-U

### Cable Prep Tools

<b>Wire snipping tool:</b>	CWST
<b>Wire stripping tool:</b>	CJAST

\*For standard cable colors, add suffix BU (Blue), WH (White), RD (Red), OR (Orange), YL (Yellow), GR (Green), VL (Violet), IG (International Gray), or BL (Black). Cable available in a standard pallet configuration of 36 cartons per pallet.

For other colors or pallet configurations, contact customer service.

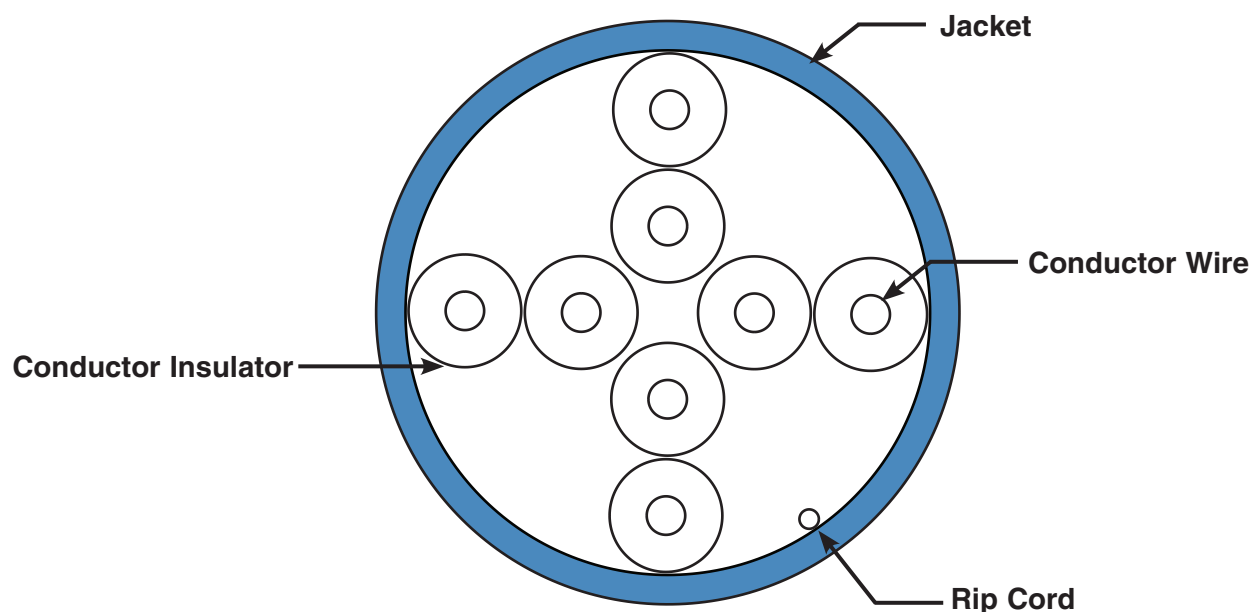
Visit [www.panduit.com](http://www.panduit.com) for connectivity components.

# TX6™ Category 6 U/UTP Copper Cable

## additional specifications

Mechanical Test	
<i>Ultimate Breaking Strength</i>	>90 lbf (400N)
<i>Minumum Bend Radius</i>	4 x cable diameter
Electrical Test	
<i>Nominal Velocity of Propagation (NVP)</i>	CMP – 72% CMR – 69%
<i>Operating Voltage, Maximum</i>	80V

## cable construction



### WORLDWIDE SUBSIDIARIES AND SALES OFFICES

PANDUIT CANADA  
Markham, Ontario  
cs-cdn@panduit.com  
Phone: 800.777.3300

PANDUIT EUROPE LTD.  
London, UK  
cs-emea@panduit.com  
Phone: 44.20.8601.7200

PANDUIT SINGAPORE PTE. LTD.  
Republic of Singapore  
cs-ap@panduit.com  
Phone: 65.6305.7575

PANDUIT JAPAN  
Tokyo, Japan  
cs-japan@panduit.com  
Phone: 81.3.6863.6000

PANDUIT LATIN AMERICA  
Guadalajara, Mexico  
cs-la@panduit.com  
Phone: 52.33.3777.6000

PANDUIT AUSTRALIA PTY. LTD.  
Victoria, Australia  
cs-aus@panduit.com  
Phone: 61.3.9794.9020

For a copy of Panduit product warranties, log on to [www.panduit.com/warranty](http://www.panduit.com/warranty)

For more information

Visit us at [www.panduit.com](http://www.panduit.com)

Contact Customer Service by email: [cs@panduit.com](mailto:cs@panduit.com)  
or by phone: 800.777.3300

**PANDUIT®**

©2015 Panduit Corp.  
ALL RIGHTS RESERVED.  
COSP372--WW-ENG  
8/2015

# Mouser Electronics

Authorized Distributor

Click to View Pricing, Inventory, Delivery & Lifecycle Information:

[Panduit:](#)

[PUP6C04BL-U](#)