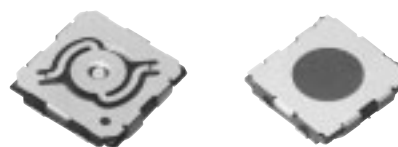


### 6 mm Square Thin Type Double-action SMD Light Touch Switches

Type: **EVQPR/EVQQ0/EVQ3PR**



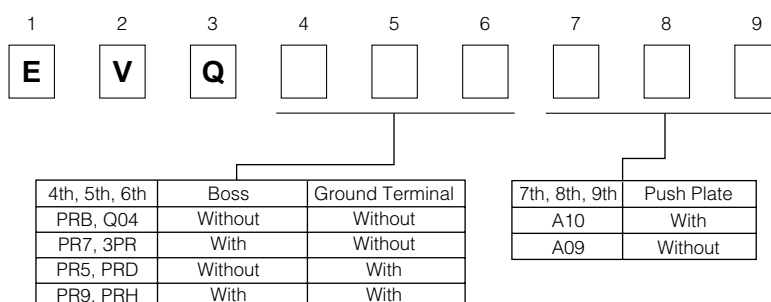
#### ■ Features

- External dimensions : 6.0 mm×6.0 mm,  
Height : 0.9 mm (Without push plate)  
0.95 mm (With push plate)
- Wide selection of double action operating variations  
With push plate : 1st 0.7 N, 2nd 2.6 N  
Without push plate : 1st 1.0 N, 2nd 2.6 N
- Wide selection of double action operating variations

#### ■ Recommended Applications

- Camera function  
(Digital still cameras, Camcorders, Mobile phones, etc.)
- Operating switches for menu scrolling and confirmation for portable equipment.

#### ■ Explanation of Part Numbers



#### ■ Specifications

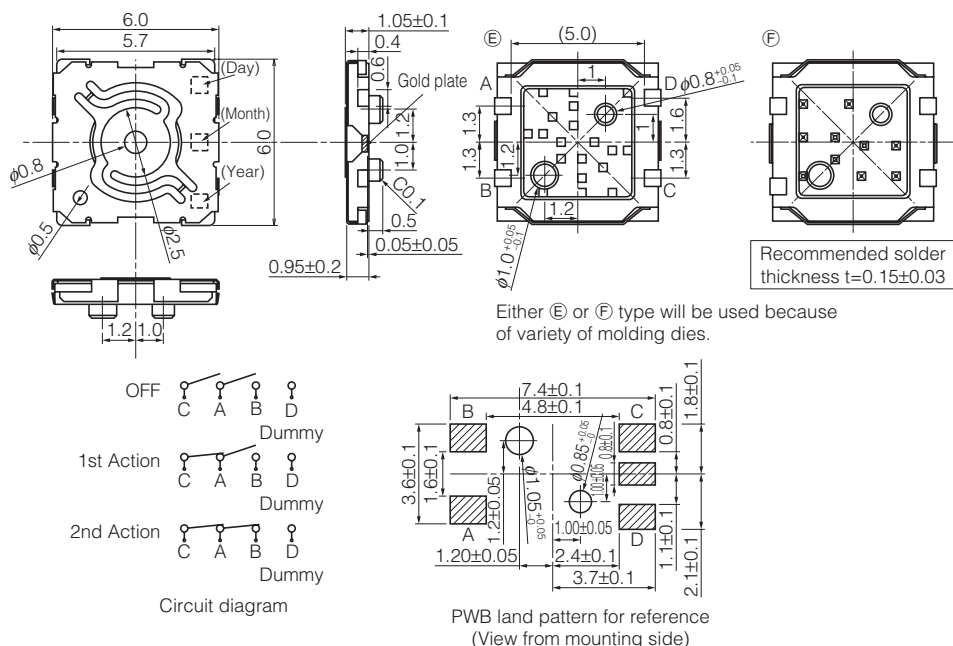
Type		Snap action/Push-on type SPDT	
Push Plate type		With Push Plate	Without Push Plate
Electrical	Rating	10 $\mu$ A 2 Vdc to 20 mA 15 Vdc (Resistive load)	
	Contact Resistance	100 m $\Omega$ max.	
	Insulation Resistance	50 M $\Omega$ min.	
	Dielectric Withstanding Voltage	100 Vac for 1 minute	
	Bouncing	3 ms max. (ON) 20 ms max. (OFF)	
Mechanical	Operating Force	1st : 0.7 N	1st : 1.0 N
		2nd : 2.6 N	2nd : 2.6 N
	Travel	1st: 0.4 mm	2nd: 0.6 mm
Endurance	Operating Life	30000 cycles min.	
Operating Temperature		-20 °C to +70 °C	
Storage Temperature		-40 °C to +85 °C (Bulk)	
		-20 °C to +60 °C (Taping)	
Minimum Quantity/Packing Unit		5000 pcs. Embossed Taping (Reel Pack)	
Quantity/Carton		25000 pcs.	

Design and specifications are each subject to change without notice. Ask factory for the current technical specifications before purchase and/or use.  
Should a safety concern arise regarding this product, please be sure to contact us immediately.

## No. 1

EVQQ0  
EVQPR

(Mounting base with Boss)  
(With ground terminal)

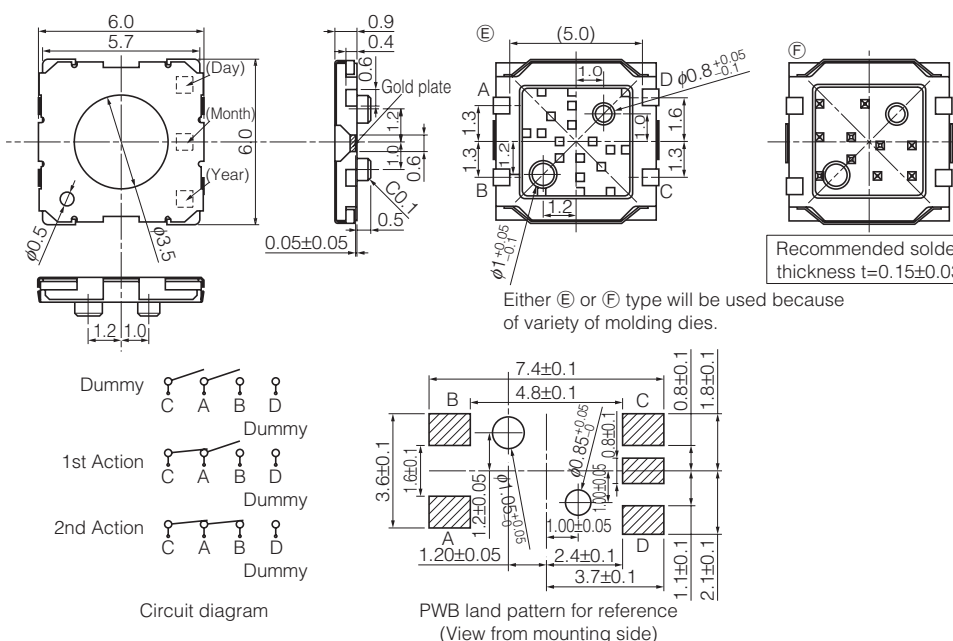
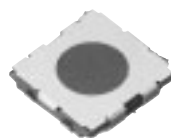


Part Numbers	Ground Terminal	Boss	Operating Force	Height	Operating Life
EVQQ04A10	Without	Without	1st/0.7 N, 2nd/2.6 N	0.95 mm	30000 cycles
EVQPR7A10	Without	With	1st/0.7 N, 2nd/2.6 N	0.95 mm	30000 cycles
EVQPR5A10	With	Without	1st/0.7 N, 2nd/2.6 N	0.95 mm	30000 cycles
EVQPR9A10	With	With	1st/0.7 N, 2nd/2.6 N	0.95 mm	30000 cycles

## No. 2

EVQPR  
EVQ3PR

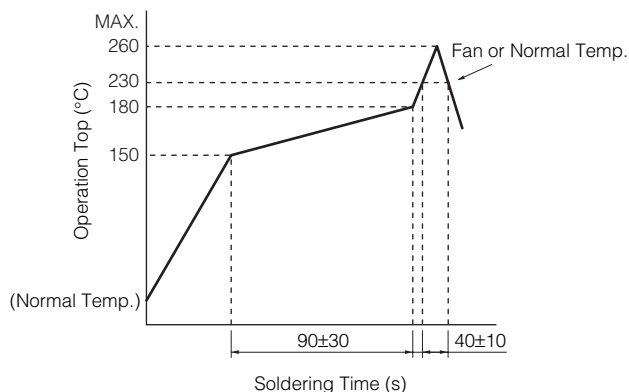
(Mounting base with Boss)  
(With ground terminal)



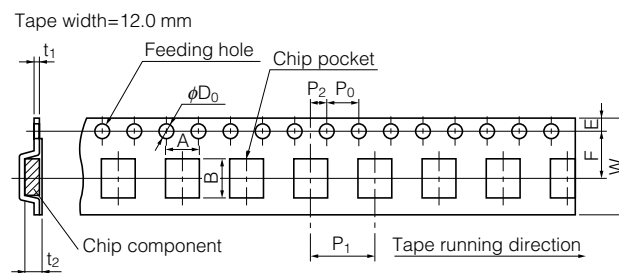
Part Numbers	Ground Terminal	Boss	Operating Force	Height	Operating Life
EVQPRBA09	Without	Without	1st/1.0 N, 2nd/2.6 N	0.9 mm	30000 cycles
EVQ3PRA09	Without	With	1st/1.0 N, 2nd/2.6 N	0.9 mm	30000 cycles
EVQPRDA09	With	Without	1st/1.0 N, 2nd/2.6 N	0.9 mm	30000 cycles
EVQPRHA09	With	With	1st/1.0 N, 2nd/2.6 N	0.9 mm	30000 cycles

00 Oct. 2012

### ■ Recommended Reflow Soldering Conditions



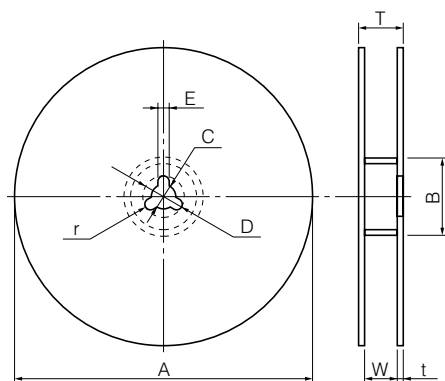
### ● Embossed Carrier Taping



Unit: mm

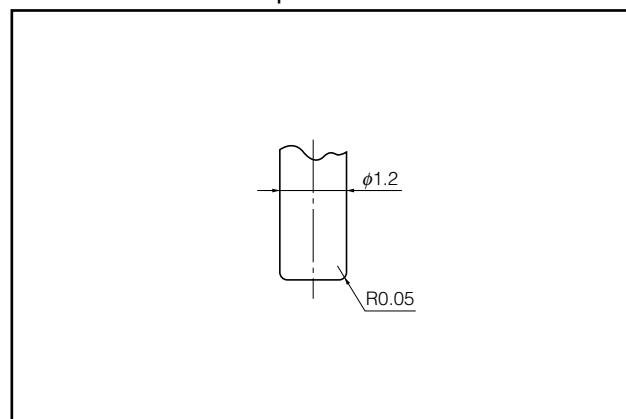
Part No.	Height	A	B	W	F	E	$P_1$	$P_2$	$P_0$	$D_0$ Dia.	$t_1$	$t_2$
EVQPR/Q0/3PR	0.9, 0.95	$6.3 \pm 0.3$	$6.3 \pm 0.3$	$12.0 \pm 0.3$	$5.50 \pm 0.15$	$1.75 \pm 0.15$	$8.00 \pm 0.15$	$2.00 \pm 0.15$	$4.00 \pm 0.15$	$1.5^{+0.1}_{-0.1}$	$0.30 \pm 0.05$	$1.7^{+0.2}_{-0.1}$

### ● Standard Reel Dimensions in mm (not to scale)

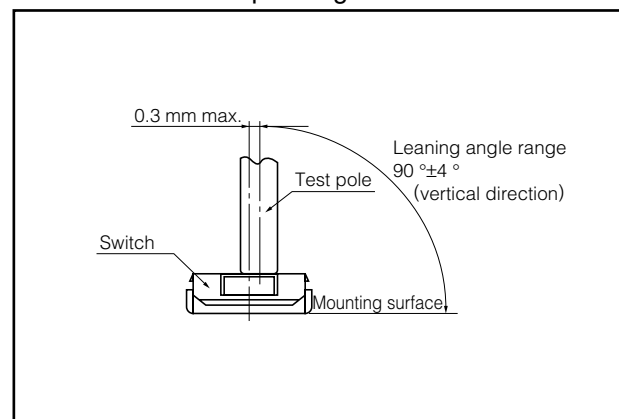


Item	A	B	C	D	E
Rate (mm)	$\phi 380.0 \pm 2.0$	$\phi 80.0 \pm 1.0$	$\phi 13.0 \pm 0.2$	$\phi 21.0 \pm 0.8$	$2.0 \pm 0.5$
Item	W	T	t	r	
Rate (mm)	$13.5 \pm 1.0$	$17.5 \pm 1.0$	1.0 to 3.0	$1.0 \pm 0.5$	

### ■ Recommended Shape of Test Pole



### ■ Recommended Operating Conditions



Design and specifications are each subject to change without notice. Ask factory for the current technical specifications before purchase and/or use.  
Should a safety concern arise regarding this product, please be sure to contact us immediately.

00 Oct. 2012

# Mouser Electronics

Authorized Distributor

Click to View Pricing, Inventory, Delivery & Lifecycle Information:

Panasonic:

[EVQ-PR3A10](#) [EVQ-PRDA09](#) [EVQ-Q0A03K](#) [EVQ-Q04A10](#)