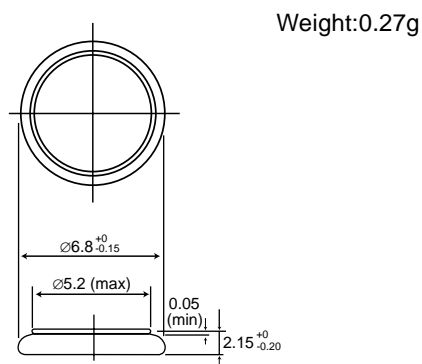


Vanadium Pentoxide Lithium Coin Batteries (VL Series): Individual Specifications

VL621

■ Dimensions(mm)

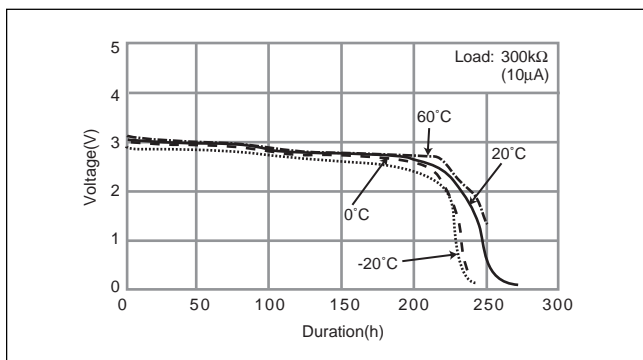


Note: This bare cell diagram is for size reference only. Please refer to the tab configurations at the end of this section for available tabs.

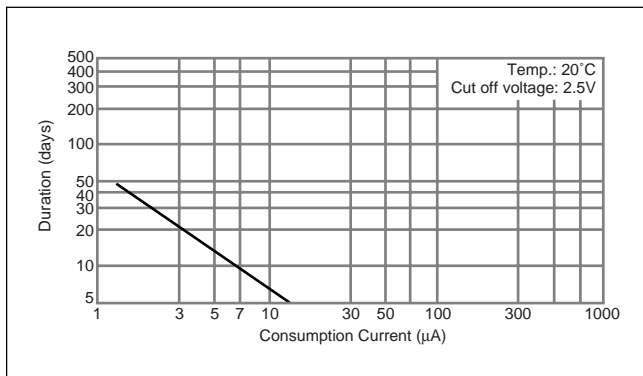
■ Specification

Nominal voltage (V)	3
Nominal capacity (mAh)	1.5
Continuous standard load (mA)	0.01
Operating temperature (C)	-20 ~ +60

■ Discharge Temperature Characteristics

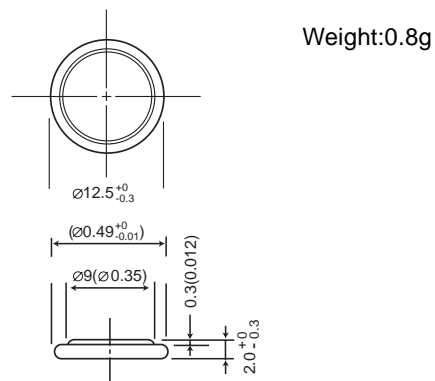


■ Consumption current vs. Duration time



VL1220

■ Dimensions(mm)

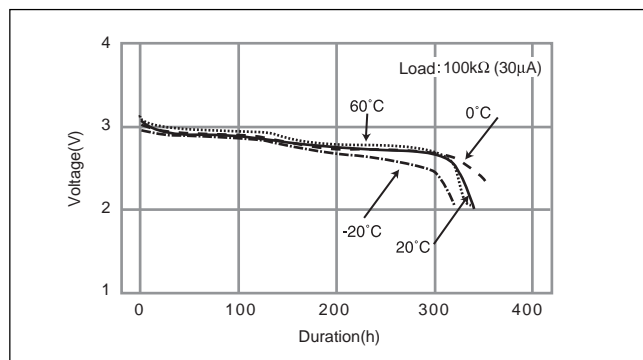


Note: This bare cell diagram is for size reference only. Please refer to the tab configurations at the end of this section for available tabs.

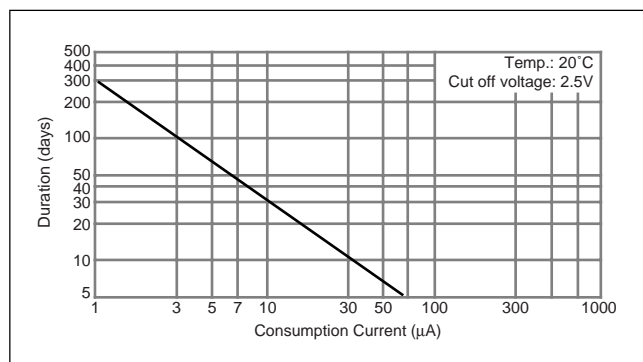
■ Specification

Nominal voltage (V)	3
Nominal capacity (mAh)	7.0
Continuous standard load (mA)	0.02
Operating temperature (C)	-20 ~ +60

■ Discharge Temperature Characteristics



■ Consumption current vs. Duration time



Mouser Electronics

Authorized Distributor

Click to View Pricing, Inventory, Delivery & Lifecycle Information:

Panasonic:

[VL-1220/FCN](#) [VL-621/DN](#) [VL-1220/VCN](#) [VL-1220/HFN](#)