



Is Now Part of



**ON Semiconductor®**

To learn more about ON Semiconductor, please visit our website at  
[www.onsemi.com](http://www.onsemi.com)

Please note: As part of the Fairchild Semiconductor integration, some of the Fairchild orderable part numbers will need to change in order to meet ON Semiconductor's system requirements. Since the ON Semiconductor product management systems do not have the ability to manage part nomenclature that utilizes an underscore (\_), the underscore (\_) in the Fairchild part numbers will be changed to a dash (-). This document may contain device numbers with an underscore (\_). Please check the ON Semiconductor website to verify the updated device numbers. The most current and up-to-date ordering information can be found at [www.onsemi.com](http://www.onsemi.com). Please email any questions regarding the system integration to [Fairchild\\_questions@onsemi.com](mailto:Fairchild_questions@onsemi.com).

ON Semiconductor and the ON Semiconductor logo are trademarks of Semiconductor Components Industries, LLC dba ON Semiconductor or its subsidiaries in the United States and/or other countries. ON Semiconductor owns the rights to a number of patents, trademarks, copyrights, trade secrets, and other intellectual property. A listing of ON Semiconductor's product/patent coverage may be accessed at [www.onsemi.com/site/pdf/Patent-Marking.pdf](http://www.onsemi.com/site/pdf/Patent-Marking.pdf). ON Semiconductor reserves the right to make changes without further notice to any products herein. ON Semiconductor makes no warranty, representation or guarantee regarding the suitability of its products for any particular purpose, nor does ON Semiconductor assume any liability arising out of the application or use of any product or circuit, and specifically disclaims any and all liability, including without limitation special, consequential or incidental damages. Buyer is responsible for its products and applications using ON Semiconductor products, including compliance with all laws, regulations and safety requirements or standards, regardless of any support or applications information provided by ON Semiconductor. "Typical" parameters which may be provided in ON Semiconductor data sheets and/or specifications can and do vary in different applications and actual performance may vary over time. All operating parameters, including "Typicals" must be validated for each customer application by customer's technical experts. ON Semiconductor does not convey any license under its patent rights nor the rights of others. ON Semiconductor products are not designed, intended, or authorized for use as a critical component in life support systems or any FDA Class 3 medical devices or medical devices with a same or similar classification in a foreign jurisdiction or any devices intended for implantation in the human body. Should Buyer purchase or use ON Semiconductor products for any such unintended or unauthorized application, Buyer shall indemnify and hold ON Semiconductor and its officers, employees, subsidiaries, affiliates, and distributors harmless against all claims, costs, damages, and expenses, and reasonable attorney fees arising out of, directly or indirectly, any claim of personal injury or death associated with such unintended or unauthorized use, even if such claim alleges that ON Semiconductor was negligent regarding the design or manufacture of the part. ON Semiconductor is an Equal Opportunity/Affirmative Action Employer. This literature is subject to all applicable copyright laws and is not for resale in any manner.



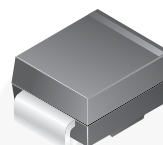
November 2014

# SMBJ5V0(C)A - SMBJ170(C)A

## 600 Watt Transient Voltage Suppressors

### Features

- Glass-Passivated Junction
- 600 W Peak Pulse Power Capability on 10/1000  $\mu$ s Waveform.
- Excellent Clamping Capability
- Low-Incremental Surge Resistance
- Fast Response Time: Typically Less than 1.0 ps from 0 V to BV minimum for Unidirectional and 5.0 ns for Bidirectional
- Typical  $I_R$  Less than 1.0  $\mu$ A Above 10 V
- UL Certificate #E258596



**SMB/DO-214AA**

Band denotes cathode on unidirectional devices only. No band on bi-directional devices. Bi-directional types have CA suffix where electrical characteristics apply in both directions suitable for bi-directional applications.

### Absolute Maximum Ratings

Stresses exceeding the absolute maximum ratings may damage the device. The device may not function or be operable above the recommended operating conditions and stressing the parts to these levels is not recommended. In addition, extended exposure to stresses above the recommended operating conditions may affect device reliability. The absolute maximum ratings are stress ratings only. Values are at  $T_A = 25^\circ\text{C}$  unless otherwise noted.

Symbol	Parameter	Value	Unit
$P_{PPM}$	Peak Pulse Power Dissipation on 10/1000 $\mu$ s Waveform	600	W
$I_{PPM}$	Peak Pulse Current on 10/1000 $\mu$ s Waveform	See Table	A
$I_{FSM}$	Non-Repetitive Peak Forward Surge Current Superimposed on Rated Load (JEDEC Method) <sup>(1)</sup>	100	A
$T_{STG}$	Storage Temperature Range	-55 to 150	$^\circ\text{C}$
$T_J$	Operating Junction Temperature Range	-55 to 150	$^\circ\text{C}$

#### Note:

1. Measured on 8.3 ms single half-sine wave or equivalent square wave: duty cycle = 4 pulses per minute maximum.

SMBJ5V0(C)A - SMBJ170(C)A — 600 Watt Transient Voltage Suppressors

## Electrical Characteristics

Values are at  $T_A = 25^\circ\text{C}$  unless otherwise noted.

Uni-Directional Bi-Directional (C) Device	Part Marking <sup>(2)</sup>	Reverse Stand-Off Voltage $V_{RWM}$ (V)	Breakdown Voltage $V_{BR}$ (V)		Test Current $I_T$ (mA)	Clamping Voltage at $I_{PPM}$ $V_C$ (V)	Peak Pulse Current $I_{PPM}$ (A)	Reverse Leakage at $V_{RWM}$ $I_R$ ( $\mu\text{A}$ ) <sup>(3)</sup>
			Min.	Max.				
SMBJ5V0(C)A	KE	5.0	6.40	7.00	10	9.2	65.2	800
SMBJ6V0(C)A	KG	6.0	6.67	7.37	10	10.3	58.3	800
SMBJ6V5(C)A	KK	6.5	7.22	7.98	10	11.2	53.6	500
SMBJ7V0(C)A	KM	7.0	7.78	8.60	10	12.0	50.0	200
SMBJ7V5(C)A	KP	7.5	8.33	9.21	1	12.9	46.5	100
SMBJ8V0(C)A	KR	8.0	8.89	9.83	1	13.6	44.1	50
SMBJ8V5(C)A	KT	8.5	9.44	10.4	1	14.4	41.7	20
SMBJ9V0(C)A	KV	9.0	10.0	11.1	1	15.4	39.0	10
SMBJ10(C)A	KX	10	11.1	12.8	1	17.0	35.3	5
SMBJ11(C)A	KZ	11	12.2	13.5	1	18.2	33.0	5
SMBJ12(C)A	LE	12	13.3	14.7	1	19.9	30.2	5
SMBJ13(C)A	LG	13	14.4	15.9	1	21.5	27.9	5
SMBJ14(C)A	LK	14	15.6	17.2	1	23.2	25.9	5
SMBJ15(C)A	LM	15	16.7	18.5	1	24.4	24.6	5
SMBJ16(C)A	LP	16	17.8	19.7	1	26.0	23.1	5
SMBJ17(C)A	LR	17	18.9	20.9	1	27.6	21.7	5
SMBJ18(C)A	LT	18	20.0	22.1	1	29.2	20.5	5
SMBJ20(C)A	LV	20	22.2	24.5	1	32.4	18.5	5
SMBJ22(C)A	LX	22	24.4	26.9	1	35.5	16.9	5
SMBJ24(C)A	LZ	24	26.7	29.5	1	38.9	15.4	5
SMBJ26(C)A	ME	26	28.9	31.9	1	42.1	14.3	5
SMBJ28(C)A	MG	28	31.1	34.4	1	45.4	13.2	5
SMBJ30(C)A	MK	30	33.3	36.8	1	48.4	12.4	5
SMBJ33(C)A	MM	33	36.7	40.6	1	53.3	11.3	5
SMBJ36(C)A	MP	36	40.0	44.2	1	58.1	10.3	5
SMBJ40(C)A	MR	40	44.4	49.1	1	64.5	9.3	5
SMBJ43(C)A	MT	43	47.8	52.8	1	69.4	8.6	5
SMBJ45(C)A	MV	45	50.0	55.3	1	72.7	8.3	5
SMBJ48(C)A	MX	48	53.3	58.9	1	77.4	7.8	5
SMBJ51(C)A	MZ	51	56.7	62.7	1	82.4	7.3	5
SMBJ54(C)A	NE	54	60.0	66.3	1	87.1	6.9	5
SMBJ58(C)A	NG	58	64.4	71.2	1	93.6	6.4	5
SMBJ60(C)A	NK	60	66.7	73.7	1	96.8	6.2	5
SMBJ64(C)A	NM	64	71.1	78.6	1	103.0	5.8	5
SMBJ70(C)A	NP	70	77.8	86.0	1	113.0	5.3	5
SMBJ75(C)A	NR	75	83.3	92.1	1	121.0	5.0	5
SMBJ78(C)A	NT	78	86.7	95.8	1	126.0	4.8	5

### Notes:

- Color band denotes cathode on unidirectional devices only. No color band on bidirectional devices.
- For bidirectional parts with  $V_{RWM} < 10\text{ V}$ , the  $I_R$  max limit is doubled.

**Electrical Characteristics** (Continued)Values are at  $T_A = 25^\circ\text{C}$  unless otherwise noted.

Uni-Directional Bi-Directional (C) Device	Part Marking <sup>(2)</sup>	Reverse Stand-Off Voltage $V_{RWM}$ (V)	Breakdown Voltage $V_{BR}$ (V)		Test Current $I_T$ (mA)	Clamping Voltage at $I_{PPM}$ $V_C$ (V)	Peak Pulse Current $I_{PPM}$ (A)	Reverse Leakage at $V_{RWM}$ $I_R$ ( $\mu\text{A}$ ) <sup>(3)</sup>
			Min.	Max.				
SMBJ85(C)A	NV	85	94.4	104.0	1	137.0	4.4	5
SMBJ90(C)A	NX	90	100.0	111.0	1	146.0	4.1	5
SMBJ100(C)A	NZ	100	111.0	123.0	1	162.0	3.7	5
SMBJ110(C)A	PE	110	122.0	135.0	1	177.0	3.4	5
SMBJ120(C)A	PG	120	133.0	147.0	1	193.0	3.1	5
SMBJ130(C)A	PK	130	144.0	159.0	1	209.0	2.9	5
SMBJ150(C)A	PM	150	167.0	185.0	1	243.0	2.5	5
SMBJ160(C)A	PP	160	178.0	197.0	1	259.0	2.3	5
SMBJ170(C)A	PR	170	189.0	209.0	1	275.0	2.2	5

**Notes:**

2. Color band denotes cathode on unidirectional devices only. No color band on bidirectional devices.
3. For bidirectional parts with  $V_{RWM} < 10$  V, the  $I_R$  max limit is doubled.

## Typical Performance Characteristics

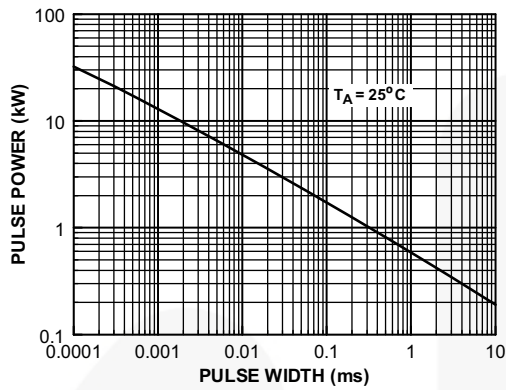


Figure 1. Peak Pulse Power Rating Curve

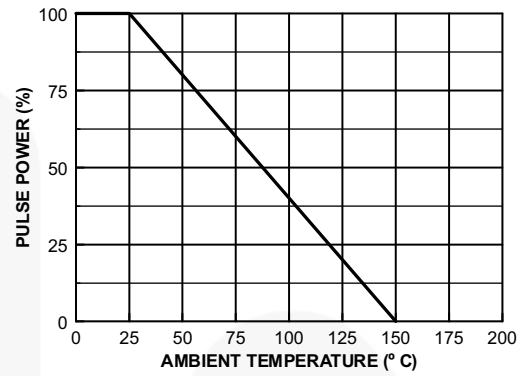


Figure 2. Pulse Derating Curve

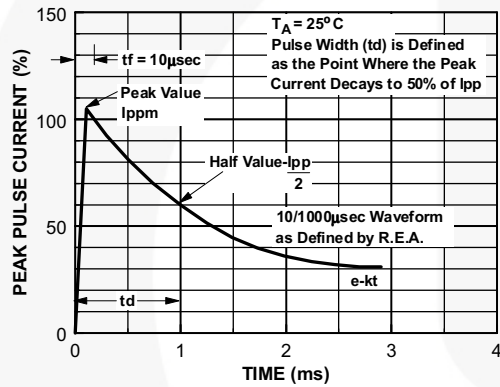


Figure 3. Pulse Waveform

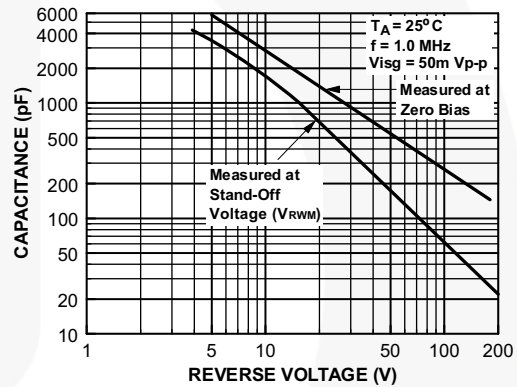


Figure 4. Junction Capacitance

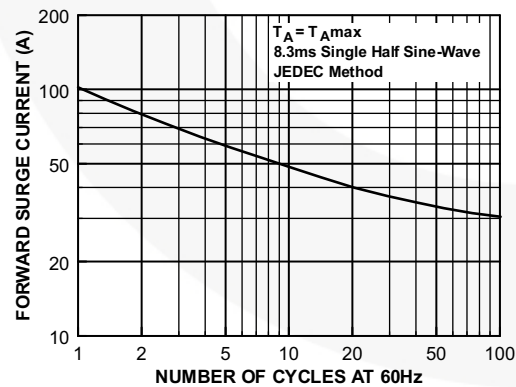
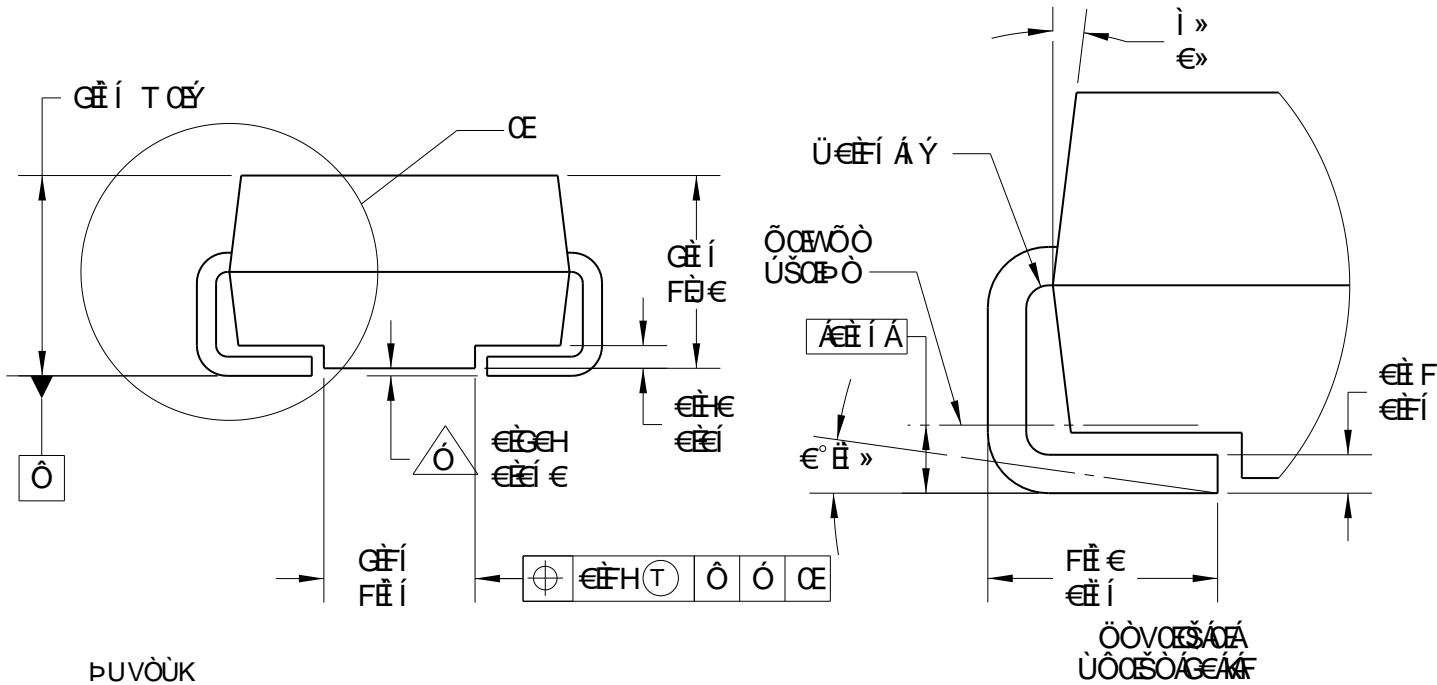
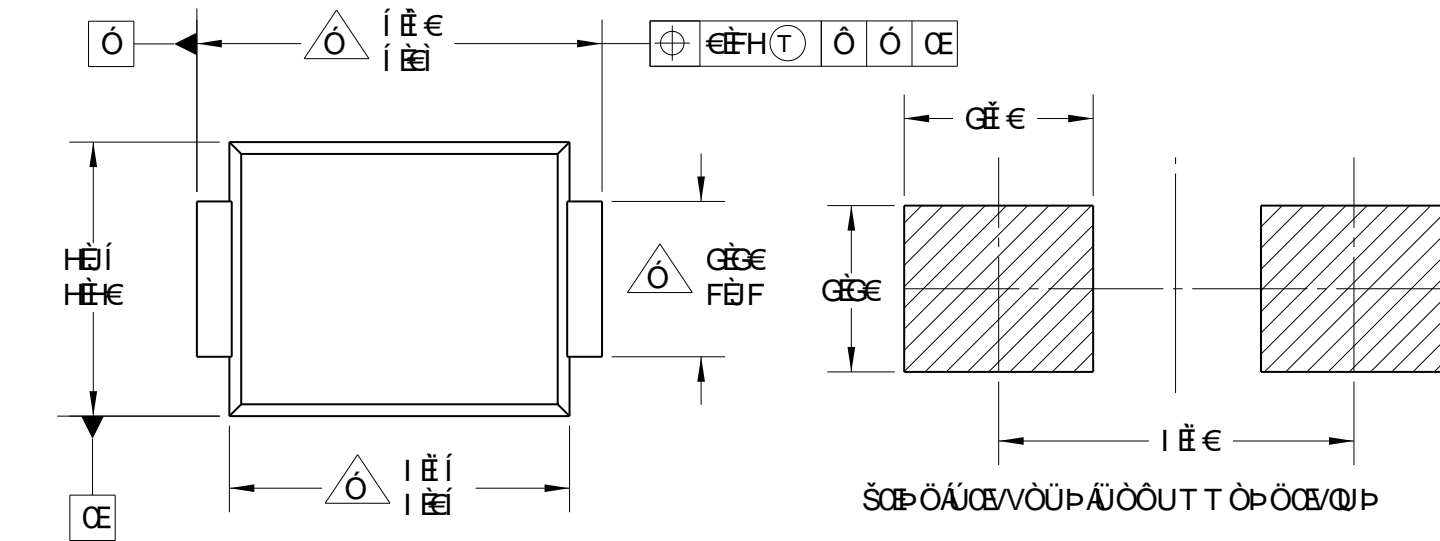


Figure 5. Non-Repetitive Surge Current

[illegible]

ህጽጃውያን			
ቦታ	ሶስታትገጽ	ዕድሜ	የሕይወት
F	ሶስታትገጽ	FJT ጽግጽ	ሶስታትገጽ



ΡΥΝΟΥΚ

ΑΙΕΥΟΥΟΥΝΑ ΡΟΥΑ ΠΥΝΟΟΟΥΡΑΥΤ ΰΑΥΑ  
 ΡΟΟΟΑΟΥΓΙ ΑΙΕΥΟΥΡΑΥΕ  
 Ο ΟΥΟΥΑΥΑΥΤ ΰΣΥ ΡΟΟΟΑΥΝΑΚΟΣΩΕ  
 ΑΙΕΑΨΑΥ ΟΥΟΥΡΑΥΑΥΑΥ ΑΨΑΥ ΟΥΟΥΕ  
 ΑΙΕΟΥ ΟΥΟΥΡΑΥΑΥΑΥ ΟΥΟΥΑΥΑΥΑΥΑΥ  
 ΑΥΑΥΑΥΑΥΑΥΑΥΑΥΑΥΑΥΑΥΑΥΑΥΑΥΑΥΑΥΑΥ  
 ΑΙΕΟΥ ΟΥΟΥΡΑΥΑΥΑΥΑΥΑΥΑΥΑΥΑΥΑΥΑΥ  
 ΥΓΙ ΕΨΥΙ Ε  
 ΑΙΕΑΥΑΥΑΥΑΥΑΥΑΥΑΥΑΥΑΥΑΥΑΥΑΥΑΥΑΥΑΥΑΥ  
 ΑΙΕΟΥΑΥΑΥΑΥΑΥΑΥΑΥΑΥΑΥΑΥΑΥΑΥΑΥΑΥΑΥΑΥΑΥ

𐀀𐀁𐀂𐀃𐀄𐀅𐀆𐀇𐀈𐀉 𐀀𐀁𐀂𐀃𐀄𐀅𐀆𐀇𐀈𐀉𐀊𐀋𐀌𐀍𐀎𐀏𐀐𐀑𐀒𐀓𐀔𐀕𐀖𐀗𐀘𐀙𐀚𐀛𐀜𐀝𐀞𐀟𐀠𐀡𐀢𐀣𐀤𐀥𐀦𐀧𐀨𐀩𐀪𐀫𐀬𐀭𐀮𐀯𐀰𐀱𐀲𐀳𐀴𐀵𐀶𐀷𐀸𐀹𐀺𐀻𐀼𐀽𐀾𐀿𐁀𐁁𐁂𐁃𐁄𐁅𐁆𐁇𐁈𐁉𐁊𐁋𐁌𐁍𐁎𐁏𐁐𐁑𐁒𐁓𐁔𐁕𐁖𐁗𐁘𐁙𐁚𐁛𐁜𐁝𐁞𐁟𐁠𐁡𐁢𐁣𐁤𐁥𐁦𐁧𐁨𐁩𐁪𐁫𐁬𐁭𐁮𐁯𐁰𐁱𐁲𐁳𐁴𐁵𐁶𐁷𐁸𐁹𐁺𐁻𐁼𐁽𐁾𐁿𐂀𐂁𐂂𐂃𐂄𐂅𐂆𐂇𐂈𐂉𐂊𐂋𐂌𐂍𐂎𐂏𐂐𐂑𐂒𐂓𐂔𐂕𐂖𐂗𐂘𐂙𐂚𐂛𐂜𐂝𐂞𐂟𐂠𐂡𐂢𐂣𐂤𐂥𐂦𐂧𐂨𐂩𐂪𐂫𐂬𐂭𐂮𐂯𐂰𐂱𐂲𐂳𐂴𐂵𐂶𐂷𐂸𐂹𐂺𐂻𐂼𐂽𐂾𐂿𐃀𐃁𐃂𐃃𐃄𐃅𐃆𐃇𐃈𐃉𐃊𐃋𐃌𐃍𐃎𐃏𐃐𐃑𐃒𐃓𐃔𐃕𐃖𐃗𐃘𐃙𐃚𐃛𐃜𐃝𐃞𐃟𐃠𐃡𐃢𐃣𐃤𐃥𐃦𐃧𐃨𐃩𐃪𐃫𐃬𐃭𐃮𐃯𐃰𐃱𐃲𐃳𐃴𐃵𐃶𐃷𐃸𐃹𐃺𐃻𐃼𐃽𐃾𐃿𐄀𐄁𐄂𐄃𐄄𐄅𐄆𐄇𐄈𐄉𐄊𐄋𐄌𐄍𐄎𐄏𐄐𐄑𐄒𐄓𐄔𐄕𐄖𐄗𐄘𐄙𐄚𐄛𐄜𐄝𐄞𐄟𐄠𐄡𐄢𐄣𐄤𐄥𐄦𐄧𐄨𐄩𐄪𐄫𐄬𐄭𐄮𐄯𐄰𐄱𐄲𐄳𐄴𐄵𐄶𐄷𐄸𐄹𐄺𐄻𐄼𐄽𐄾𐄿𐅀𐅁𐅂𐅃𐅄𐅅𐅆𐅇𐅈𐅉𐅊𐅋𐅌𐅍𐅎𐅏𐅐𐅑𐅒𐅓𐅔𐅕𐅖𐅗𐅘𐅙𐅚𐅛𐅜𐅝𐅞𐅟𐅠𐅡𐅢𐅣𐅤𐅥𐅦𐅧𐅨𐅩𐅪𐅫𐅬𐅭𐅮𐅯𐅰𐅱𐅲𐅳𐅴𐅵𐅶𐅷𐅸𐅹𐅺𐅻𐅼𐅽𐅾𐅿𐆀𐆁𐆂𐆃𐆄𐆅𐆆𐆇𐆈𐆉𐆊𐆋𐆌𐆍𐆎𐆏𐆐𐆑𐆒𐆓𐆔𐆕𐆖𐆗𐆘𐆙𐆚𐆛𐆜𐆝𐆞𐆟𐆠𐆡𐆢𐆣𐆤𐆥𐆦𐆧𐆨𐆩𐆪𐆫𐆬𐆭𐆮𐆯𐆰𐆱𐆲𐆳𐆴𐆵𐆶𐆷𐆸𐆹𐆺𐆻𐆼𐆽𐆾𐆿𐇀𐇁𐇂𐇃𐇄𐇅𐇆𐇇𐇈𐇉𐇊𐇋𐇌𐇍𐇎𐇏𐇐𐇑𐇒𐇓𐇔𐇕𐇖𐇗𐇘𐇙𐇚𐇛𐇜𐇝𐇞𐇟𐇠𐇡𐇢𐇣𐇤𐇥𐇦𐇧𐇨𐇩𐇪𐇫𐇬𐇭𐇮𐇯𐇰𐇱𐇲𐇳𐇴𐇵𐇶𐇷𐇸𐇹𐇺𐇻𐇼𐇽𐇾𐇿𐈀𐈁𐈂𐈃𐈄𐈅𐈆𐈇𐈈𐈉𐈊𐈋𐈌𐈍𐈎𐈏𐈐𐈑𐈒𐈓𐈔𐈕𐈖𐈗𐈘𐈙𐈚𐈛𐈜𐈝𐈞𐈟𐈠𐈡𐈢𐈣𐈤𐈥𐈦𐈧𐈨𐈩𐈪𐈫𐈬𐈭𐈮𐈯𐈰𐈱𐈲𐈳𐈴𐈵𐈶𐈷𐈸𐈹𐈺𐈻𐈼𐈽𐈾𐈿𐉀𐉁𐉂𐉃𐉄𐉅𐉆𐉇𐉈𐉉𐉊𐉋𐉌𐉍𐉎𐉏𐉐𐉑𐉒𐉓𐉔𐉕𐉖𐉗𐉘𐉙𐉚𐉛𐉜𐉝𐉞𐉟𐉠𐉡𐉢𐉣𐉤𐉥𐉦𐉧𐉨𐉩𐉪𐉫𐉬𐉭𐉮𐉯𐉰𐉱𐉲𐉳𐉴𐉵𐉶𐉷𐉸𐉹𐉺𐉻𐉼𐉽𐉾𐉿𐊀𐊁𐊂𐊃𐊄𐊅𐊆𐊇𐊈𐊉𐊊𐊋𐊌𐊍𐊎𐊏𐊐𐊑𐊒𐊓𐊔𐊕𐊖𐊗𐊘𐊙𐊚𐊛𐊜𐊝𐊞𐊟𐊠𐊡𐊢𐊣𐊤𐊥𐊦𐊧𐊨𐊩𐊪𐊫𐊬𐊭𐊮𐊯𐊰𐊱𐊲𐊳𐊴𐊵𐊶𐊷𐊸𐊹𐊺𐊻𐊼𐊽𐊾𐊿𐋀𐋁𐋂𐋃𐋄𐋅𐋆𐋇𐋈𐋉𐋊𐋋𐋌𐋍𐋎𐋏𐋐𐋑𐋒𐋓𐋔𐋕𐋖𐋗𐋘𐋙𐋚𐋛𐋜𐋝𐋞𐋟𐋠𐋡𐋢𐋣𐋤𐋥𐋦𐋧𐋨𐋩𐋪𐋫𐋬𐋭𐋮𐋯𐋰𐋱𐋲𐋳𐋴𐋵𐋶𐋷𐋸𐋹𐋺𐋻𐋼𐋽𐋾𐋿𐌀𐌁𐌂𐌃𐌄𐌅𐌆𐌇𐌈𐌉𐌊𐌋𐌌𐌍𐌎𐌏𐌐𐌑𐌒𐌓𐌔𐌕𐌖𐌗𐌘𐌙𐌚𐌛𐌜𐌝𐌞𐌟𐌠𐌡𐌢𐌣𐌤𐌥𐌦𐌧𐌨𐌩𐌪𐌫𐌬𐌭𐌮𐌯𐌰𐌱𐌲𐌳𐌴𐌵𐌶𐌷𐌸𐌹𐌺𐌻𐌼𐌽𐌾𐌿𐍀𐍁𐍂𐍃𐍄𐍅𐍆𐍇𐍈𐍉𐍊𐍋𐍌𐍍𐍎𐍏𐍐𐍑𐍒𐍓𐍔𐍕𐍖𐍗𐍘𐍙𐍚𐍛𐍜𐍝𐍞𐍟𐍠𐍡𐍢𐍣𐍤𐍥𐍦𐍧𐍨𐍩𐍪𐍫𐍬𐍭𐍮𐍯𐍰𐍱𐍲𐍳𐍴𐍵𐍶𐍷𐍸𐍹𐍺𐍻𐍼𐍽𐍾𐍿𐎀𐎁𐎂𐎃𐎄𐎅𐎆𐎇𐎈𐎉𐎊𐎋𐎌𐎍𐎎𐎏𐎐𐎑𐎒𐎓𐎔𐎕𐎖𐎗𐎘𐎙𐎚𐎛𐎜𐎝𐎞𐎟𐎠𐎡𐎢𐎣𐎤𐎥𐎦𐎧𐎨𐎩𐎪𐎫𐎬𐎭𐎮𐎯𐎰𐎱𐎲𐎳𐎴𐎵𐎶𐎷𐎸𐎹𐎺𐎻𐎼𐎽𐎾𐎿𐏀𐏁𐏂𐏃𐏄𐏅𐏆𐏇𐏈𐏉𐏊𐏋𐏌𐏍𐏎𐏏𐏐𐏑𐏒𐏓𐏔𐏕𐏖𐏗𐏘𐏙𐏚𐏛𐏜𐏝𐏞𐏟𐏠𐏡𐏢𐏣𐏤𐏥𐏦𐏧𐏨𐏩𐏪𐏫𐏬𐏭𐏮𐏯𐏰
---

ON Semiconductor and  are trademarks of Semiconductor Components Industries, LLC dba ON Semiconductor or its subsidiaries in the United States and/or other countries. ON Semiconductor owns the rights to a number of patents, trademarks, copyrights, trade secrets, and other intellectual property. A listing of ON Semiconductor's product/patent coverage may be accessed at [www.onsemi.com/site/pdf/Patent-Marking.pdf](http://www.onsemi.com/site/pdf/Patent-Marking.pdf). ON Semiconductor reserves the right to make changes without further notice to any products herein. ON Semiconductor makes no warranty, representation or guarantee regarding the suitability of its products for any particular purpose, nor does ON Semiconductor assume any liability arising out of the application or use of any product or circuit, and specifically disclaims any and all liability, including without limitation special, consequential or incidental damages. Buyer is responsible for its products and applications using ON Semiconductor products, including compliance with all laws, regulations and safety requirements or standards, regardless of any support or applications information provided by ON Semiconductor. "Typical" parameters which may be provided in ON Semiconductor data sheets and/or specifications can and do vary in different applications and actual performance may vary over time. All operating parameters, including "Typicals" must be validated for each customer application by customer's technical experts. ON Semiconductor does not convey any license under its patent rights nor the rights of others. ON Semiconductor products are not designed, intended, or authorized for use as a critical component in life support systems or any FDA Class 3 medical devices or medical devices with a same or similar classification in a foreign jurisdiction or any devices intended for implantation in the human body. Should Buyer purchase or use ON Semiconductor products for any such unintended or unauthorized application, Buyer shall indemnify and hold ON Semiconductor and its officers, employees, subsidiaries, affiliates, and distributors harmless against all claims, costs, damages, and expenses, and reasonable attorney fees arising out of, directly or indirectly, any claim of personal injury or death associated with such unintended or unauthorized use, even if such claim alleges that ON Semiconductor was negligent regarding the design or manufacture of the part. ON Semiconductor is an Equal Opportunity/Affirmative Action Employer. This literature is subject to all applicable copyright laws and is not for resale in any manner.

## PUBLICATION ORDERING INFORMATION

### LITERATURE FULFILLMENT:

Literature Distribution Center for ON Semiconductor  
19521 E. 32nd Pkwy, Aurora, Colorado 80011 USA  
**Phone:** 303-675-2175 or 800-344-3860 Toll Free USA/Canada  
**Fax:** 303-675-2176 or 800-344-3867 Toll Free USA/Canada  
**Email:** [orderlit@onsemi.com](mailto:orderlit@onsemi.com)

**N. American Technical Support:** 800-282-9855 Toll Free  
USA/Canada

**Europe, Middle East and Africa Technical Support:**  
Phone: 421 33 790 2910

**Japan Customer Focus Center**  
Phone: 81-3-5817-1050

**ON Semiconductor Website:** [www.onsemi.com](http://www.onsemi.com)

**Order Literature:** <http://www.onsemi.com/orderlit>

For additional information, please contact your local  
Sales Representative

# Mouser Electronics

Authorized Distributor

Click to View Pricing, Inventory, Delivery & Lifecycle Information:

[onsemi:](#)

[SMBJ6V5CA](#)