



Test Procedure for the NCP57152DSADGEVB Evaluation Board

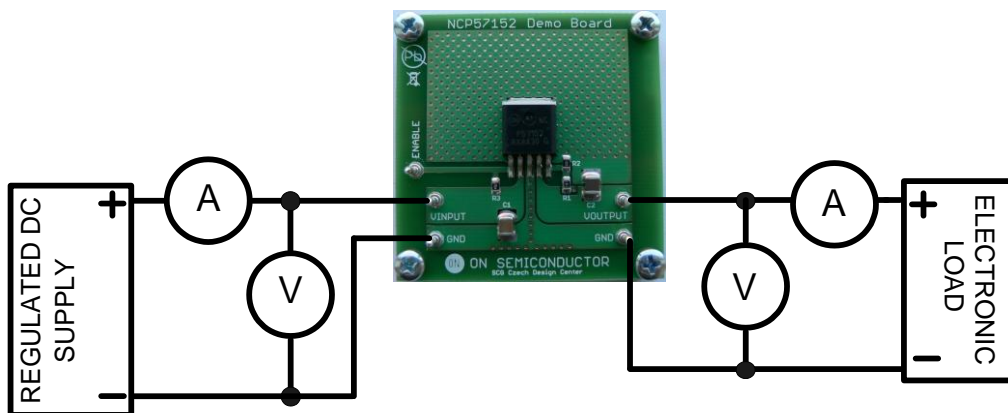


Figure 1: Test Setup

Test Procedure:

1. Connect the test setup as shown in Figure 1.
2. Apply an input voltage, $V_{in} = 2.5\text{ V dc}$
3. Apply $I_{out} = 10\text{ mA}$ load.
4. Check that V_{out} is 1.5 V
5. Increase I_{out} load to 1.5 A
6. Check that V_{out} is 1.5 V
7. Power down the load
8. Power down V_{in}
9. End of test

Mouser Electronics

Authorized Distributor

Click to View Pricing, Inventory, Delivery & Lifecycle Information:

[onsemi:](#)

[NCP57152DSADGEVB](#)