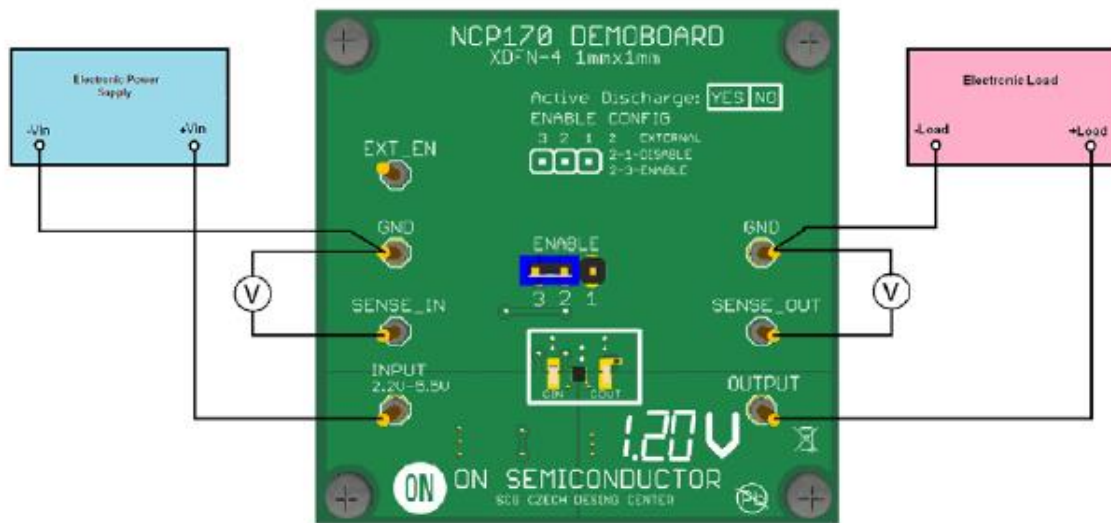




Test Procedure for the NCP170AMX180GEVB Evaluation Board



Test procedure:

1. Check the position of jumper and correct this if necessary in accordance with the picture above.
2. Connect the test setup as shown Figure above
3. Apply an input voltage **$V_{in} = 2.8\text{ V}$**
4. Apply $I_{out} = 0\text{mA}$ load.
5. Check that V_{out} is **$1.8\text{ V} \pm 1\%$** .
6. Increase I_{out} up to **0.15 A**
7. Check that V_{out} is **$1.8\text{ V} \pm 1\%$** .
7. Increase V_{in} up to **5.5 V** and decrease the load in accordance with **SOA**
8. Power down the Load
9. Power down the V_{cc}
10. End of test

Mouser Electronics

Authorized Distributor

Click to View Pricing, Inventory, Delivery & Lifecycle Information:

[onsemi:](#)

[NCP170AMX180GEVB](#)