

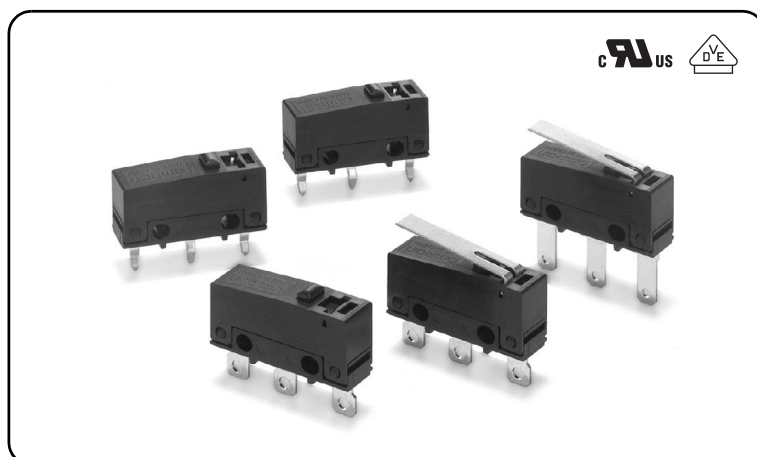
# SS-P

Subminiature Basic Switch

## SS Series Compatible Mounting with a Simple Construction and Easy-to-Use Design Concept

- One-piece terminal construction to keep out flux.
- A single leaf movable spring construction.
- Conforms to North American and European safety Standards.







RoHS Compliant



## Model Number Legend

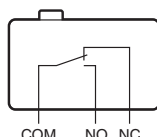
SS- <span style="border: 1px solid black; padding: 0 2px;">1</span> G <span style="border: 1px solid black; padding: 0 2px;">2</span> P <span style="border: 1px solid black; padding: 0 2px;">3</span>		
<b>1. Ratings</b>		<b>3. Terminals</b>
3 : 125 VAC 3 A		None : Solder terminals
01 : 30 VDC 0.1 A		T : Quick-connect terminals (#110)
<b>2. Actuator</b>		D : PCB terminals
None : Pin plunger		
L : Hinge lever		
L13 : Simulated roller lever		

## List of Models

Ratings	Actuator	Terminals	Solder terminals	Quick-connect terminals (#110)	PCB terminals
3A	Pin plunger		SS-3GP	SS-3GPT	SS-3GPD
	Hinge lever		SS-3GLP	SS-3GLPT	SS-3GLPD
	Simulated roller lever		SS-3GL13P	SS-3GL13PT	SS-3GL13PD
0.1A	Pin plunger		SS-01GP	SS-01GPT	SS-01GPD
	Hinge lever		SS-01GLP	SS-01GLPT	SS-01GLPD
	Simulated roller lever		SS-01GL13P	SS-01GL13PT	SS-01GL13PD

## Contact Form

### ●SPDT



Separator (Sold Separately), Terminal Connector (Sold Separately) ➡ Refer to "Basic Switch Common Accessories"

## Contact Specifications

Item	Model	SS-3P models	SS-01P models
Contact	Specification	Rivet	Crossbar
	Material	Silver	Gold alloy
	Gap (standard value)	0.5 mm	0.5 mm
Minimum applicable load (reference value) *		5 VDC 160 mA	5 VDC 1 mA

\* Please refer to "Using Micro Loads" in "●Precautions" for more information on the minimum applicable load.

## Ratings

Model	SS-3P models	SS-01P models
Rated voltage	Resistive load	
Item		
125 VAC	3 A	0.1 A
30 VDC	3 A	0.1 A

Note 1. The above rating values apply under the following test conditions.

- (1) Ambient temperature: 20±2°C
- (2) Ambient humidity: 65±5%
- (3) Operating frequency: 20 operations/min

Note 2. Consult your OMRON sales representative for information on models for other loads.

## Characteristics

Item		Model	SS-3P models	SS-01P models
Permissible operating speed			0.1 mm to 1 m/s (for pin plunger models)	
Permissible operating frequency	Mechanical		300 operations/min	
	Electrical		30 operations/min	
Insulation resistance			100 MΩ min. (at 500 VDC with insulation tester)	
Contact resistance (initial value)			50 mΩ max.	100 mΩ max.
Dielectric strength *1	Between terminals of the same polarity		1,000 VAC 50/60 Hz for 1 min	
	Between current-carrying metal parts and ground		1,500 VAC 50/60 Hz for 1 min	
	Between each terminals and non-current-carrying metal parts		1,500 VAC 50/60 Hz for 1 min	
Vibration resistance *2	Malfunction		10 to 55 Hz, 1.5 mm double amplitude	
Shock resistance	Durability		1,000 m/s <sup>2</sup> {approx. 100G} max.	
	Malfunction *2		300 m/s <sup>2</sup> {approx. 30G} max.	
Durability *3	Mechanical		1,000,000 operations min. (60 operations/min)	
	Electrical	70,000 operations min. (20 operations/min, 125 VAC)		200,000 operations min. (20 operations/min)
		100,000 operations min. (20 operations/min, 30 VDC)		
Degree of protection			IEC IP40	
Degree of protection against electric shock			Class I	
Proof tracking index (PTI)			250	
Ambient operating temperature			-25°C to +85°C (at ambient humidity of 60% max.) (with no icing or condensation)	
Ambient operating humidity			85% max. (for +5 to +35°C)	
Weight			Approx. 1.6 g (pin plunger models)	

Note. The data given above are initial values.

\*1. The values for dielectric strength shown are for models with a Separator (refer to "Micro Switch Common Accessories").

\*2. The values are at Free Position and Total Travel Position values for pin plunger, and Total Travel Position value for lever.  
Close or open circuit of the contact is 1 ms max.

\*3. For testing conditions, consult your OMRON sales representative.

## Approved Safety Standards

### UL (UL1054/CSA C22.2 No.55)

Model	SS-3P	SS-01P
Rated voltage	Resistive load	
Item		
125 VAC	3 A	0.1 A
30 VDC	3 A	0.1 A

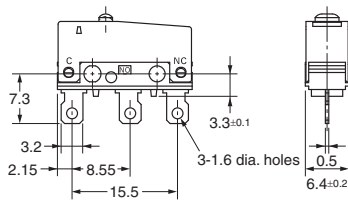
### VDE (EN61058-1)

Model	SS-3P	SS-01P
Rated voltage	Resistive load	
Item		
125 VAC	3 A	0.1 A
30 VDC	3 A	0.1 A

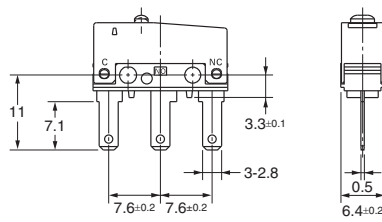
Testing conditions: 5E4 (50,000 operations) T55 (0 to 55°C)

## Terminals/Appearances (Unit: mm)

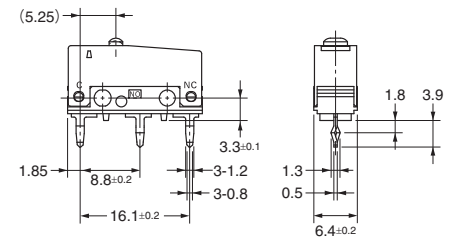
### ●Solder terminals



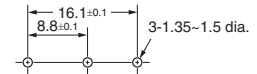
### ●Quick Connect Terminals (#110)



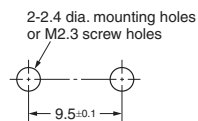
### ●PCB terminals



### <PCB Mounting Dimensions (Reference)>



## Mounting Holes (Unit: mm)



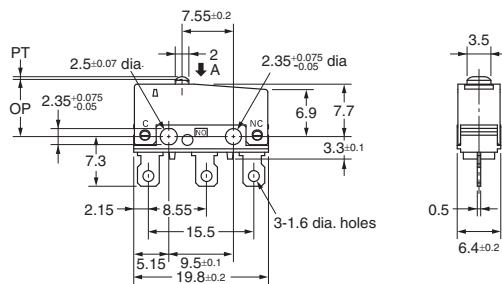
## Dimensions (Unit: mm) and Operating Characteristics

The illustrations and dimensions are for models with solder terminals. Refer to "Terminals/Appearances" for details on models with quick connect terminals (#110) or PCB terminals.

### ●Pin plunger

#### SS-3GP

#### SS-01GP

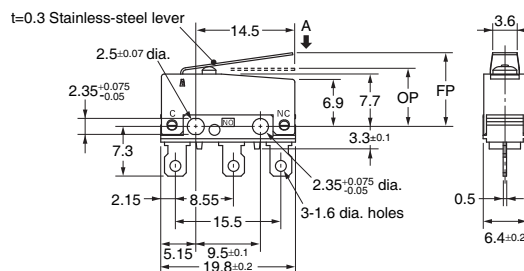


Operating characteristics	Model	SS-3GP	SS-01GP
Operating Force	OF	Max.	1.50 N {153 gf}
Releasing Force	RF	Min.	0.2 N {20 gf}
Pretravel	PT	Max.	0.6 mm
Overtravel	OT	Min.	0.4 mm
Movement Differential	MD	Max.	0.15 mm
Operating Position	OP		8.4±0.3 mm

### ●Hinge lever

#### SS-3GLP

#### SS-01GLP

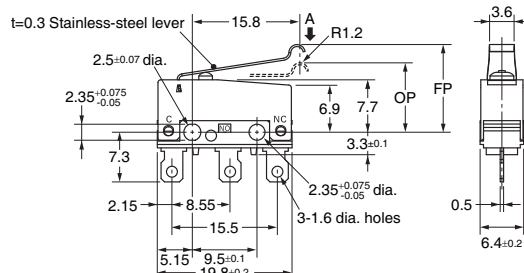
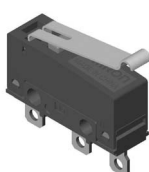


Operating characteristics	Model	SS-3GLP	SS-01GLP
Operating Force	OF	Max.	0.5 N {51 gf}
Releasing Force	RF	Min.	0.05 N {5 gf}
Overtravel	OT	Min.	1.0 mm
Movement Differential	MD	Max.	0.8 mm
Free Position	FP	Max.	13.6 mm
Operating Position	OP		8.8±0.8 mm

### ●Simulated roller lever

#### SS-3GL13P

#### SS-01GL13P



Operating characteristics	Model	SS-3GL13P	SS-01GL13P
Operating Force	OF	Max.	0.5 N {51 gf}
Releasing Force	RF	Min.	0.05 N {5 gf}
Overtravel	OT	Min.	1.0 mm
Movement Differential	MD	Max.	0.8 mm
Free Position	FP	Max.	15.5 mm
Operating Position	OP		10.7±0.8 mm

Note 1. Unless otherwise specified, a tolerance of  $\pm 0.4$  mm applies to all dimensions.

Note 2. The operating characteristics are for operation in the A direction (↓).

Precautions

★Please refer to "Common Precautions" for correct use.

Cautions

●Soldering

- Connecting to Solder Terminals  
Complete the soldering at the iron tip temperature of 350 to 400°C within 5 seconds, and do not apply any external force for 1 minute after soldering. Soldering at an excessively high temperature or soldering for more than 5 seconds may deteriorate the characteristics of the Switch.
- Connecting to PCB terminals  
When using automatic soldering baths, we recommend soldering at 260±5°C within 5 seconds. Make sure that the liquid surface of the solder does not flow over the edge of the board.  
When soldering terminals manually, complete the soldering at the iron tip temperature between 350 to 400°C within 3 seconds, and do not apply any external force for 1 minute after soldering. When applying solder, keep the solder away from the case of the Switch and do not allow solder or flux to flow into the case.

Correct Use

●Mounting

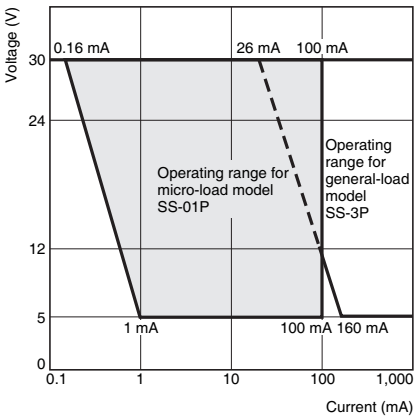
Use M2.3 mounting screw with plane washers or spring washers to securely mount the Switch. Tighten the screws to a torque of 0.23 to 0.26 N·m {2.3 to 2.7 kgf·cm}.

●Using Micro Loads

Using a model for ordinary loads to open or close the contact of a micro load circuit may result in faulty contact. Use models that operate in the following range. However, even when using micro load models within the following operating range, if inrush current occurs when the contact is opened or closed, it may increase the contact wear and so decrease durability. Therefore, insert a contact protection circuit where necessary. The N-level reference value applies for the minimum applicable load. This value indicates the malfunction reference level for the reliability level of 60% ( $\lambda_{60}$ ).

(JIS C5003)

The equation,  $\lambda_{60}=0.5\times10^{-6}/\text{operation}$  indicates that the estimated malfunction rate is less than  $\frac{1}{2,000,000}$  operations with a reliability level of 60%.



- Application examples provided in this document are for reference only. In actual applications, confirm equipment functions and safety before using the product.
- Consult your OMRON representative before using the product under conditions which are not described in the manual or applying the product to nuclear control systems, railroad systems, aviation systems, vehicles, combustion systems, medical equipment, amusement machines, safety equipment, and other systems or equipment that may have a serious influence on lives and property if used improperly. Make sure that the ratings and performance characteristics of the product provide a margin of safety for the system or equipment, and be sure to provide the system or equipment with double safety mechanisms.

**Note: Do not use this document to operate the Unit.**

# Mouser Electronics

Authorized Distributor

Click to View Pricing, Inventory, Delivery & Lifecycle Information:

Omron:  
SS-3GLPT