

G3VM-61BR/ER

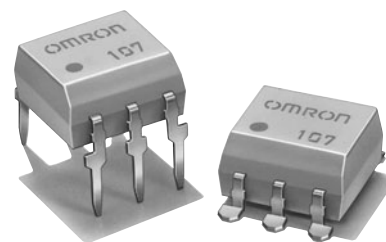
MOS FET Relays

New Analog-switching MOS FET Relays

Featuring a High Capacity of 2.5 A.

- Switches minute analog signals.
- Low ON-resistance of 0.1 Ω max.
- Continuous load current of 2.5 A.

RoHS compliant

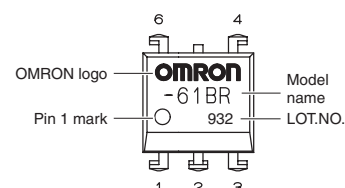
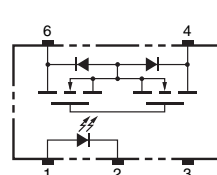


Note: The actual product is marked differently from the image shown here.

Application Examples

- Test & Measurement equipment
- Security equipment

Terminal Arrangement/Internal Connections



Note: The actual product is marked differently from the image shown here.

List of Models

Package type	Contact form	Terminals	Load voltage (peak value) *	Model	Minimum package quantity	
					Number per tube	Number per tape and reel
DIP6	1a (SPST-NO)	PCB Terminals	60 V	G3VM-61BR	50	-
		Surface-mounting Terminals		G3VM-61ER		
				G3VM-61ER(TR)	-	1,500

* The AC peak and DC value are given for the load voltage.

Absolute Maximum Ratings (Ta = 25°C)

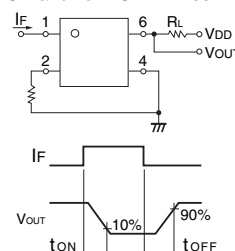
Item	Symbol	Rating	Unit	Measurement conditions
Input	LED forward current	IF	30	mA
	LED forward current reduction rate	$\Delta I_F / ^\circ\text{C}$	-0.3	mA/°C
	LED reverse voltage	VR	5	V
	Connection temperature	TJ	125	°C
Output	Load voltage (AC peak/DC)	VOFF	60	V
	Continuous load current (AC peak/DC)	IO	2500	mA
	ON current reduction rate	$\Delta I_O / ^\circ\text{C}$	-22	mA/°C
	Connection temperature	TJ	125	°C
Dielectric strength between I/O (See note 1.)		VI-O	2500	Vrms
Ambient operating temperature		Ta	-20 to +85	°C
Ambient storage temperature		Tstg	-40 to +125	°C
Soldering temperature		-	260	°C

Note: 1. The dielectric strength between the input and output was checked by applying voltage between all pins as a group on the LED side and all pins as a group on the light-receiving side.

Electrical Characteristics (Ta = 25°C)

Item	Symbol	Minimum	Typical	Maximum	Unit	Measurement conditions
Input	LED forward voltage	VF	1.18	1.33	1.48	V
	Reverse current	IR	-	10	μA	VR = 5 V
	Capacity between terminals	CT	-	70	pF	V = 0, f = 1 MHz
	Trigger LED forward current	IFT	-	1.0	3	mA
Output	Maximum resistance with output ON	-	0.065	0.1	Ω	IF = 10 mA, IO = 2 A, t = 10 ms
	Current leakage when the relay is open	ILEAK	-	1.0	10	nA
	Capacity between terminals	COFF	-	400	600	pF
	Capacity between I/O terminals	CI-O	-	0.8	-	pF
Insulation resistance between I/O terminals		RI-O	1000	-	-	M Ω
Turn-ON time		tON	-	1.0	1.5	ms
Turn-OFF time		tOFF	-	0.2	0.4	ms

Note: 2. Turn-ON and Turn-OFF Times



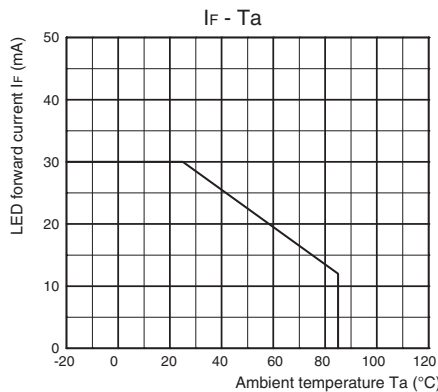
Recommended Operating Conditions

Use the G3VM under the following conditions so that the Relay will operate properly.

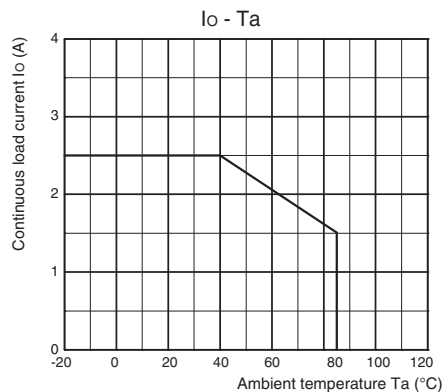
Item	Symbol	Minimum	Typical	Maximum	Unit
Load voltage (AC peak/DC)	V_{DD}	-	-	48	V
Operating LED forward current	I_F	10	-	20	mA
Continuous load current (AC peak/DC)	I_O	-	-	2500	mA
Ambient operating temperature	T_a	25	-	60	°C

Engineering Data

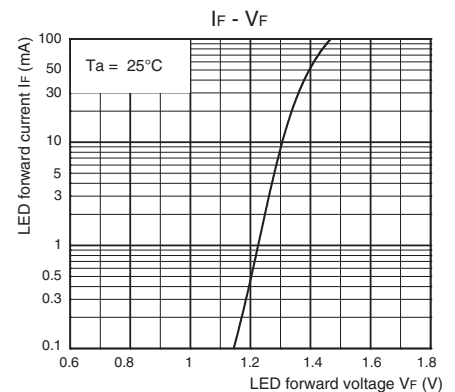
LED forward current vs. Ambient temperature



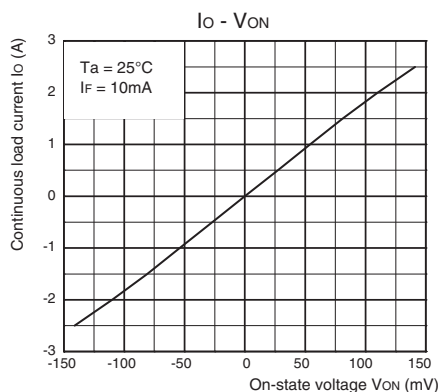
Continuous load current vs. Ambient temperature



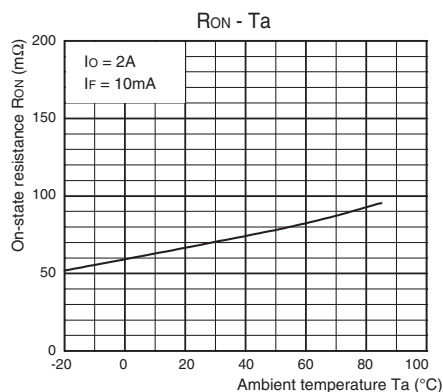
LED forward current vs. LED forward voltage



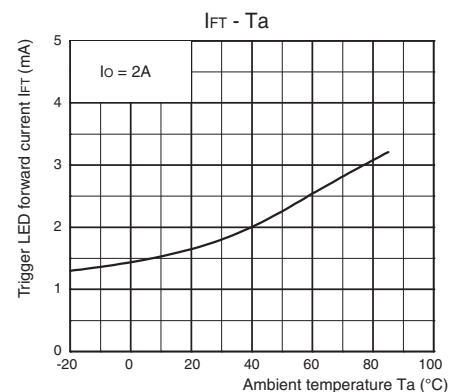
Continuous load current vs. On-state voltage



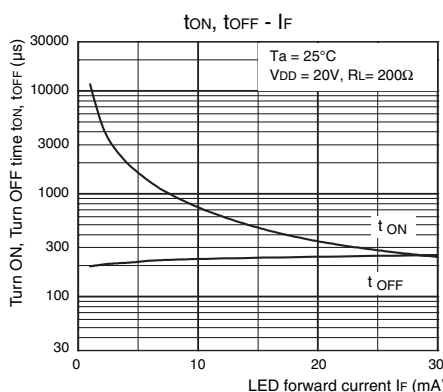
On-state resistance vs. Ambient temperature



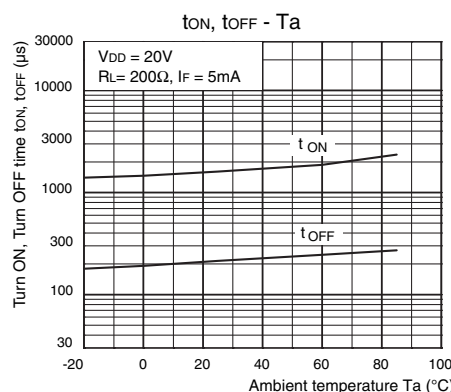
Trigger LED forward current vs. Ambient temperature



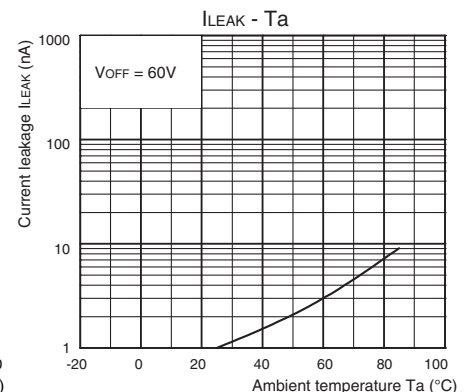
Turn ON, Turn OFF time vs. LED forward current



Turn ON, Turn OFF time vs. Ambient temperature



Current leakage vs. Ambient temperature



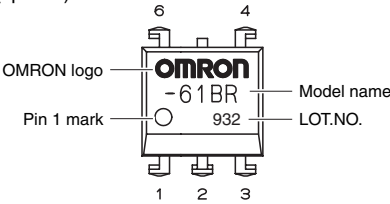
Safety Precautions

- Refer to "Common Precautions" for all G3VM models.

■ Appearance

DIP (Dual Inline Package)

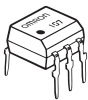
DIP6 (special)



Note: The actual product is marked differently from the image shown here.

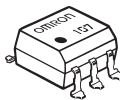
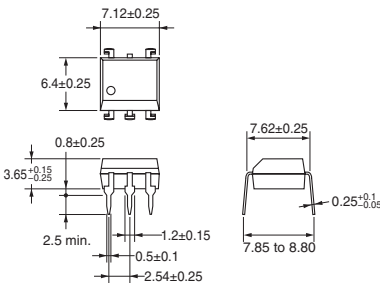
■ Dimensions

(Unit:mm)



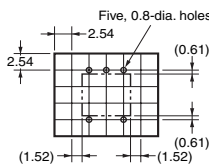
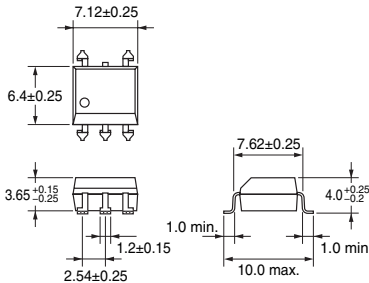
PCB Terminals

Weight: 0.4 g



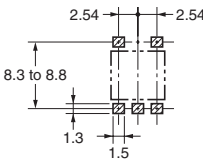
Surface-mounting Terminals PCB Dimensions (BOTTOM VIEW)

Weight: 0.4 g



Actual Mounting Pad Dimensions

(Recommended Value, TOP VIEW)



Note: The actual product is marked differently from the image shown here.

- Application examples provided in this document are for reference only. In actual applications, confirm equipment functions and safety before using the product.
- Consult your OMRON representative before using the product under conditions which are not described in the manual or applying the product to nuclear control systems, railroad systems, aviation systems, vehicles, combustion systems, medical equipment, amusement machines, safety equipment, and other systems or equipment that may have a serious influence on lives and property if used improperly. Make sure that the ratings and performance characteristics of the product provide a margin of safety for the system or equipment, and be sure to provide the system or equipment with double safety mechanisms.

Note: Do not use this document to operate the Unit.

OMRON Corporation

ELECTRONIC AND MECHANICAL COMPONENTS COMPANY

Contact: www.omron.com/ecb

Cat. No. **K175-E1-01**
0412(0412)(O)

Mouser Electronics

Authorized Distributor

Click to View Pricing, Inventory, Delivery & Lifecycle Information:

[Omron:](#)

[G3VM-61BR](#) [G3VM-61ER](#)