

Software NTST

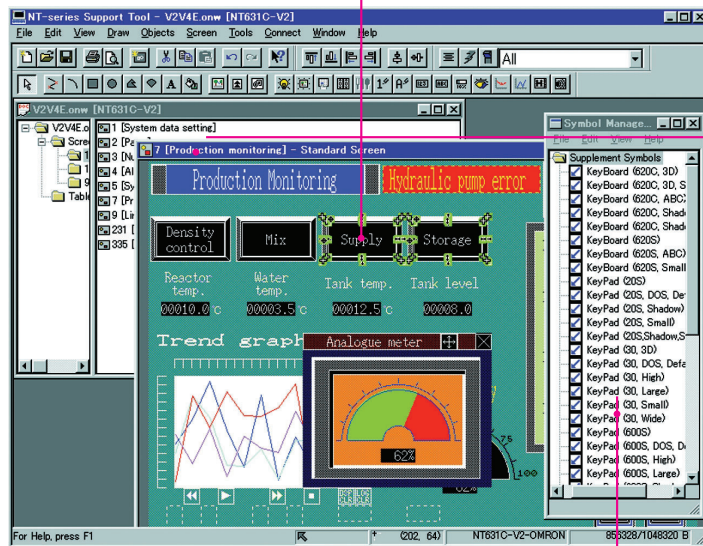
Quick Link
K103

HMI Project Design, Monitoring and Operation for NT-Series

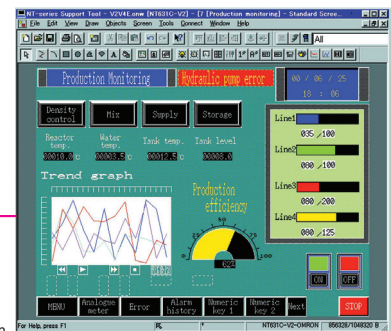
- For NT11, NT21, NT631 and NT31 Operator Interface Terminals
- NT31 and NT631 support multi-vendor PLCs

Greatly Improved Support Software: Better Data Reusability for Even Greater Design Efficiency

Windows® look and feel environment ensures easy operation, allowing anyone to create screens quickly and easily. The enhanced ON/OFF simulation function of the NT631/NT31 and easy application of existing screen data accelerate product development and designing.

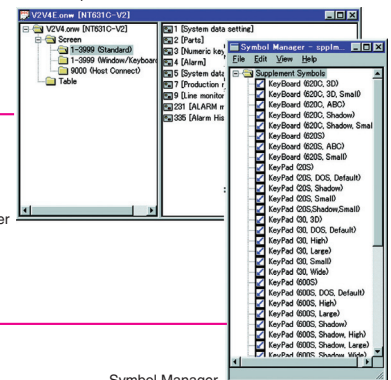


Edit screen



- The arrow keys on the keyboard are used to move elements dot by dot.
- Displays element and cursor coordinates.
- The window being manipulated can be displayed or not displayed.
- Zooms up to 800%.

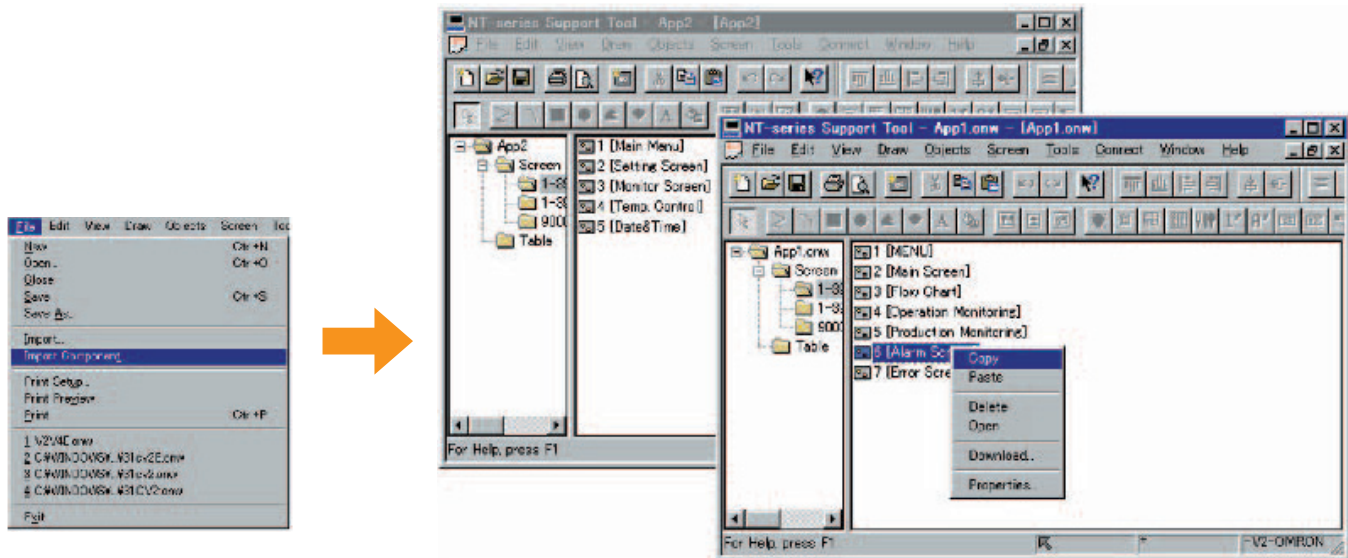
Application Manager



Symbol Manager

Share I/O Comments

I/O comments can be imported from ladder program and other files created on the CX-Programmer. The imported I/O comments can be used as guide text to reduce the time and trouble required to input comments. Importing comments also helps to eliminate mistakes in PLC I/O allocations, and greatly reducing the time required later for corrections.



Effectively Use Existing Screen Data

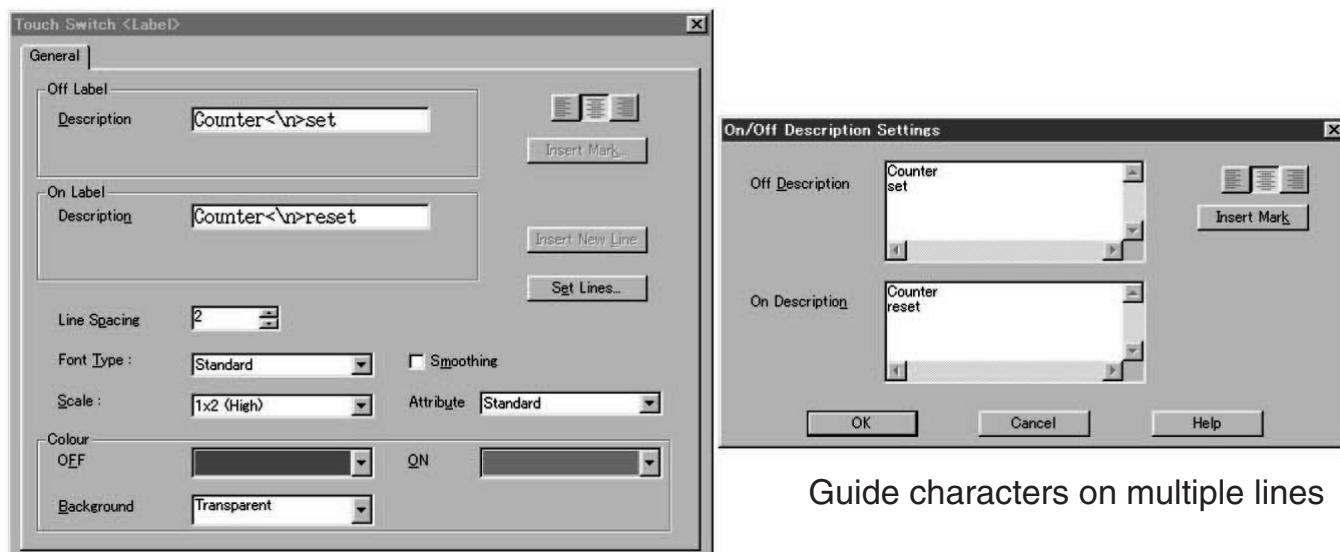
It is possible to load screens and tables independently from different screen data files. Existing screen data can now be used efficiently.

Powerful Editing and Screen-creation Functions for Easier Screen Production

Complete Display Functionality for Guide Characters and Numeric/Character Strings

Guide Characters

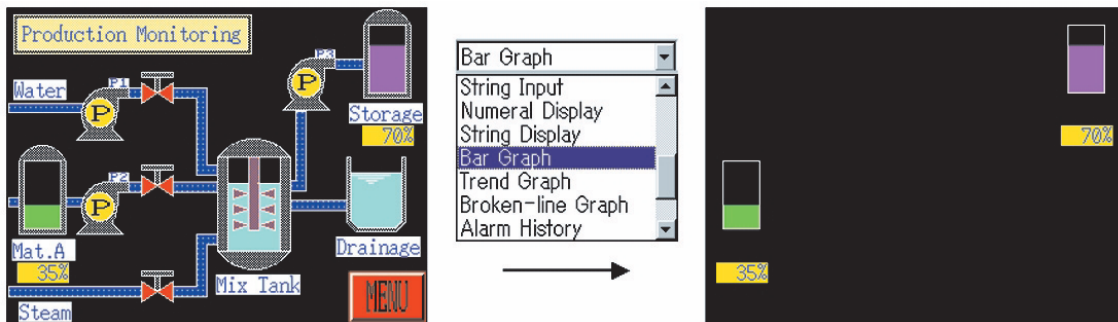
Guide characters for touch switches and lamps can be displayed on multiple lines, can be turned ON and OFF, and can be left-, right-, or center-aligned.



Guide characters on multiple lines

Filter Function

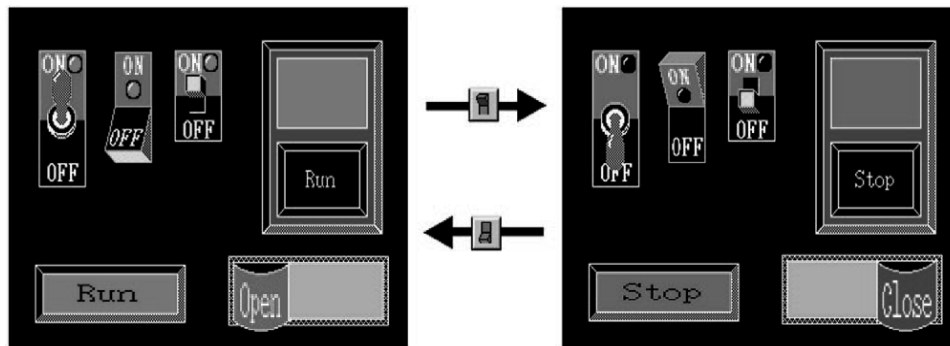
Example to display only the bar graph. The filter function makes editing easier by displaying only the elements you select for modification.



The above example is to display only the bar graph.

ON/OFF Simulation on Edit Screen

Easily confirm the ON/OFF status of lamps and touch switches from a personal computer. Simulations are performed with screens made from standard elements. The touch switches, lamps, and other elements that have been made can be easily registered with the symbol manager.

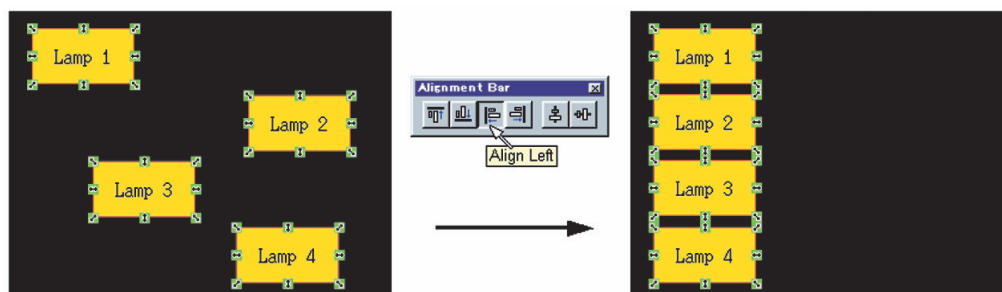


Element Alignment

Elements can be top-, bottom-, left-, right-, or center-aligned automatically.

More Power After Completing Screen Creation

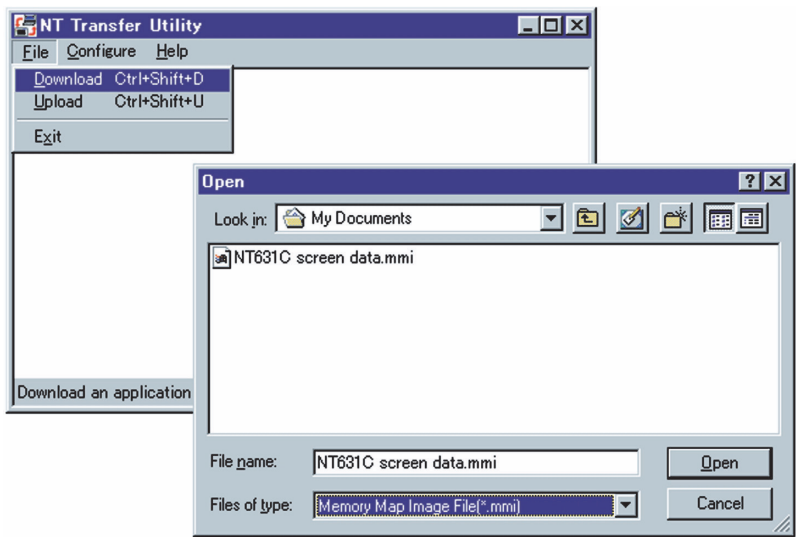
Easy and Flexible Documentation



Screens, memory tables, and other data can be output in RTF format to enable easy creation of specifications and other documents.

Special Utility to Transfer Screen Data

It is possible to transfer screens by using a special software application instead of the NT Support Software. The software application can be set up separately.



System Requirements

Memory	Hard disk	Operating System
CPU: Pentium 100 MHz min.	Software capacity: 17 MB	Windows® 95, 98, 2000, NT 4.0, Me, or XP
RAM: 32 MB min.	Installer: 3 MB	Media: CD-ROM
	Sample elements: 32 MB	

Ordering Information

Item	Language	Operating Systems	Model
NTST Support Software	English	Windows® 95, 98, NT, 2000, Me, or XP	NT-ZJCAT1-EV4

Mouser Electronics

Authorized Distributor

Click to View Pricing, Inventory, Delivery & Lifecycle Information:

Omron:

[NT-ZJCAT1-EV4](#)