



MOD-RFID1356

User Manual



All boards produced by Olimex are ROHS compliant

Rev.A, May 2008

Copyright(c) 2008, OLIMEX Ltd, All rights reserved

INTRODUCTION:

MOD-RFID1356 is an RFID station, able to interact with ISO15693 compliant VICC transponders. All the complexity of RFID tag detection, verification and decoding are handled by MOD-RFID1356. Custom command requests can be initiated to facilitate VICC EEPROM read and write operations.

MOD-RFID1356 supports two distinctive modes of operation, easily switched by a single button press. It can emulate USB HID keyboard and input the read TAG ID directly to any Windows application, including the venerable Notepad. Or it can emulate USB CDC serial port for easy access from custom user applications using standard code for COM port access.

FEATURES:

- Supports ISO15693 compliant VICC transponders like EM4034.
- Base RFID frequency 13,56MHz;
- USB port connection to PC;
- Two modes of operation, easily changed by pressing the button;
- USB HID keyboard emulation mode;
- USB CDC serial port emulation mode;
- Simple command-line interface in USB CDC mode for configuration, data acquisition and initiation of custom command requests;
- Two LEDs indicating device status and tag presence;
- Support for continuous and periodic RF scanning to better suit user power requirements;
- Ships with default mode USB HID and default configuration: continuous read, scan always, LEDs activated;

ELECTROSTATIC WARNING:

The MOD-RFID1356 board is shipped in protective anti-static packaging. The board must not be subject to high electrostatic potentials. General practice for working with static sensitive devices should be applied when working with this board.

REQUIREMENTS:

Cables: 1.8 meter USB A-B cable.

Software:

Software needed for USB HID keyboard mode:

- Notepad or other text editor.

Software needed for USB CDC mode:

- HyperTerminal or other terminal program.

SUPPORTED RFID TAGS/VICC:

MOD-RFID1356 supports RFID transponder tags with the following characteristics:

- ISO15693 compliant transponders;
- 13,56MHz carrier frequency;
- **1 out of 4** transmission encoding (VCD to VICC);
- High data rate (26,48kbit/s) reception encoding using one sub-carrier frequency.

CAVEAT: MOD-RFID1356 does not support reliably the anticollision algorithm as defined in the ISO15693 standard. It **will** work reliably only if there is a single VICC in the vicinity **or** if there is no RF collision. If there is an RF collision, supposedly because of two VICCs with almost identical UIDs, it might not detect both of them.

POWER SUPPLY:

Normally the device is supplied from USB.

LEDS:

In normal mode the GREEN LED is on whenever the RF antenna circuit is active and scanning for RFID tags. The RED LED switches on whenever a valid RF TAG ID is being scanned and decoded successfully.

The LEDs can be switched off to save power consumption. See the “Command Line Interface” section for more information.

In boot loader mode the LEDs have other meaning. See the “Firmware Upgrade” section for more information.

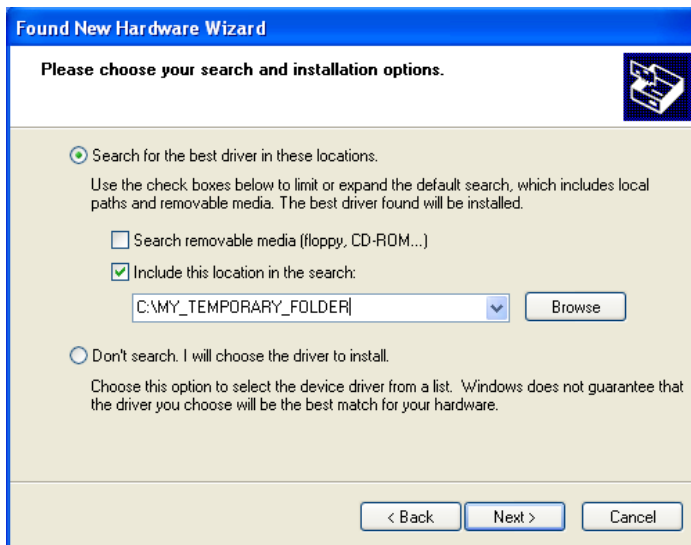
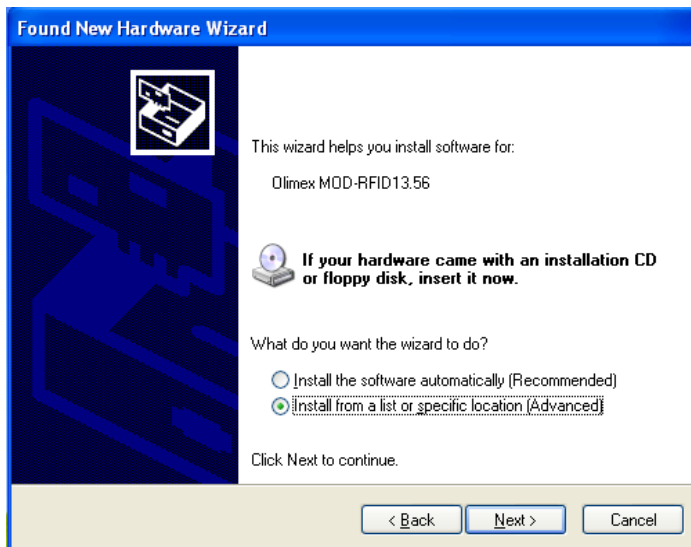
PC DRIVER INSTALLATION:

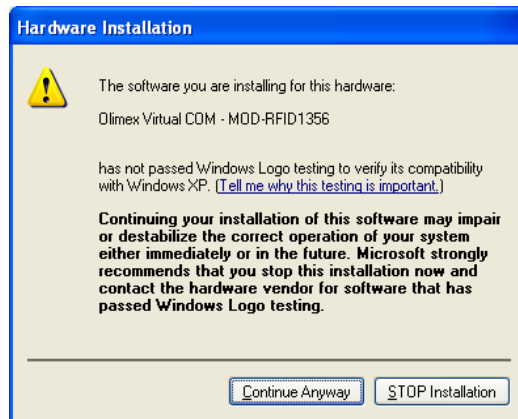
Drivers for the USB HID mode are integrated in Windows XP/Vista.

The driver for USB CDC mode is available from our website. Windows installation steps are the following:

1. Download and unzip the file “MOD-RFID1356-drivers.zip” in a temporary directory.
2. Plug the programmer in the USB port.
3. Point the Device Wizard to the temporary directory.
4. Windows will complain that drivers are not signed. Click “Continue”.
5. Click finish.

Screen shots of the steps are shown below:





Linux distributions normally include drivers both for USB HID and USB CDC classes. Depending on which driver is loaded in the kernel, user should look either for

`/dev/ttyACMn`

or

`/dev/ttyUSBn`

where "n" is a number, assigned by the kernel to the plugged device.

USB HID MODE:

When device is connected via USB to a host PC it will represent itself as USB HID keyboard. When an RFID transponder is detected in the vicinity, the module will type the HEX-representation of the transponder ID.

To use the device in this mode:

1. Open Notepad.
2. Plug in the device in the USB port of the PC.
3. Put an RFID tag in front of the device. The TAG ID will be entered in the currently opened text file.

There is no need for OS driver because all major operating systems include USB HID drivers.

NOTE: This mode does not allow configuration of device parameters. MOD-RFID1356 is shipped with default configuration for continuous read. If this

must be changed then device must be switched to USB CDC mode and configured using the serial command line interface.

USB CDC MODE:

In this mode the device represents itself as USB CDC virtual serial port. It provides a simple shell-like command line interface for configuring and interacting with the module. The device echoes back the typed characters and waits for Carriage Return (Enter) before processing the line input. See “Command Line Interface” for more information on the supported commands.

Any terminal software can be used to open the COM port, assigned by the OS, and type in commands.

SWITCHING OPERATING MODES:

The current mode of operation can be selected by pressing and holding the button of the device. After two seconds the LEDs will start to blink and will show the code for the next selected mode. When button is released, the device will reboot and enter the selected mode. Selected mode is remembered between power downs. The assigned codes are:

LED Status		Description	
Red	Green	Previous State	State After Button Is Released
blinks	off	USB CDC	USB HID
off	blinks	USB HID	USB CDC

COMMAND LINE INTERFACE (USB CDC mode):

The command line interface, available in USB CDC mode, allows device configuration and reading of successfully decoded TAG IDs. Just open the serial port assigned to MOD-RFID1356 using HyperTerminal or similar terminal program, and start typing commands.

For the impatient: type '?' and press enter to see a short help for the supported commands. Any typed character will be echoed back; 'enter' will force the module to process the input command line.

1. **Command ?**
This command prints a short help message, describing the available commands and their arguments.
2. **Command i**
This command prints a short information about firmware version, hardware board revision, and currently selected configuration.
3. **Command b**
This command forces the device to enter boot loader mode. After executing this command the device will disconnect itself from USB, switch to boot loader mode, and reconnect itself in anticipation of

receiving a firmware upgrade image. See the section “Firmware Upgrade” for more information.

4. Command **r**

This command is only valid if device is in single read mode (see below). It will trigger a single TAG read. If TAG ID is successfully read, it will be printed. Otherwise if operation timeouts, zeros will be printed.

5. Command **msXX**

Set single read mode. The XX parameter must be a decimal value, indicating the TAG read timeout in seconds.

Example – setting single read mode with 15 seconds timeout:

ms15

6. Command **mcFR**

Set continuous read mode with frequency F (Hz). R is for compatibility with other Olimex products and is otherwise ignored if present. Both F and R must be single digit decimal numbers.

If F is 0 then RF antenna is constantly switched on and the device scans continuously for tags. Otherwise if F is 1-5, the device will switch the antenna on F times per second.

Example – continuous scanning:

mc0

Example – scan once per second:

mc1

7. Command **mlE**

Set LED mode. If E is 0, LEDs will be disabled. Otherwise if E is 1, LEDs will be enabled.

Example – enabling LEDs:

ml1

Example – disabling LEDs to conserve power:

ml0

8. Command **cT1,T2,FFCCDD...DD**

Issue custom command request. T1 and T2 are timeouts in milliseconds. T1 shows how much to wait in RF silence before issuing timeout. T2 defines the total reception timeout, no matter what is decoded from the RF field. Typical values for both are 50 to 100ms. After them is the hexadecimal representation of the request which will be issued. FF is the request flags byte, CC is the command code, followed by zero or more data bytes. CRC is automatically handled by MOD-RFID1356.

If answer was correctly received and decoded the response format would be:

<FFAA...

where FF is the response flags byte, followed by one or more response data bytes.

On error the following is returned:

!eXX

where XX is a decimal number code of the occurred error. In general the VICC error code bytes are propagated, along with some additional MOD-RFID1356 specific error codes. See the table below for error code definitions.

Error code	Description
1	Command code request not supported.
2	Request format not recognized.
3	Command option is not supported.
14	Generic error.
16	Specified block does not exist.
18	Specified block is locked.
19	Block write error.
20	Block lock error.
160	Power check failed.
256	VICC response timeout.
257	MOD-RFID1356 does not possess enough memory to complete the requested operation.
258	VICC response has incorrect CRC.

Please consult the ISO15693 standard and your VICC datasheet for more information about request and answer formats.

Example – read four 32-bit EEPROM words starting from word number 2, addressed version, both timeouts set to 100ms, addressing VICC UID with 7B8C0016010416E0:

c100,100,20237B8C0016010416E00204

Example – read four 32-bit EEPROM words starting from word number 2, non-addressed version:

c100,100,00230204

Example – write EEPROM word at address 0xA with value 0x11223344, addressed version, addressing VICC UID with 7B8C0016010416E0:

c100,100,20217B8C0016010416E00A11223344

Example – write EEPROM word at address 0xA with value 0x11223344, non-addressed version:

c100,100,00210A11223344

Below is a screen shot of command line session using HyperTerminal:

ELECTRICAL CHARACTERISTICS:

Symbol	Description	Condition	Min	Typ	Max	Units
V_{CC}	Power Supply Voltage.					V
$I_{CC,NOLED}$	Power Supply Current with deactivated LEDs.	Idle (RF scanning not active)				mA
		Continuous scanning				mA
		Scanning 2 times per second				mA
I_{CC}	Power Supply Current with activated LEDs.	Continuous scanning				mA
		Scanning 2 times per second				mA

ORDER CODE:

MOD-RFID1356 - assembled and tested (no kit, no soldering required)

How to order?

You can order to us directly or by any of our distributors.

Check our web www.olimex.com/dev for more info.

Revision history:

REV.A - create May 2008

Disclaimer:

© 2008 Olimex Ltd. All rights reserved. Olimex®, logo and combinations thereof, are registered trademarks of Olimex Ltd. Other terms and product names may be trademarks of others.

The information in this document is provided in connection with Olimex products. No license, express or implied or otherwise, to any intellectual property right is granted by this document or in connection with the sale of Olimex products.

Neither the whole nor any part of the information contained in or the product described in this document may be adapted or reproduced in any material from except with the prior written permission of the copyright holder.

The product described in this document is subject to continuous development and improvements. All particulars of the product and its use contained in this document are given by OLIMEX in good faith. However all warranties implied or expressed including but not limited to implied warranties of merchantability or fitness for purpose are excluded.

This document is intended only to assist the reader in the use of the product. OLIMEX Ltd. shall not be liable for any loss or damage arising from the use of any information in this document or any error or omission in such information or any incorrect use of the product.

Mouser Electronics

Authorized Distributor

Click to View Pricing, Inventory, Delivery & Lifecycle Information:

[Olimex Ltd.:](#)

[MOD-RFID1356-BOX](#)