

# Control Knobs

## INSTRUMENT KNOBS

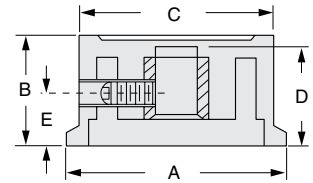


### FEATURES

- Phenolic material provides heat and impact resistance for durability
- Can be customized with decorative inlays, indicator lines, or slots
- Engraving, hot stamping, and pad printing available for a distinct appearance

Ohmite Part	Dimensions (inches)					Set screw	Shaft hole*	Finish**
	A	B	C	D	E			
5200E	25/32	15/32	21/32	13/32	7/32	M3 x 0.5	BB	SDL
5205E	1	27/32	29/32	1/2	37/64	M4 x 0.7	BB	SDL
5210E	19/32	11/32	15/32	33/64	21/32	M4 x 0.7	BB	SDL
5220E	13/4	115/32	11/2	45/64	13/16	M4 x 0.7	BB	SDL
5240E	19/32	35/64	31/64	27/64	23/64	M3 x 0.5	BB	L
5250E	15/16	25/32	3/4	19/32	19/32	M4 x 0.7	BB	L
5300E	17/32	5/8	3/8	7/32	7/16	6-32	PH	SCL
5302E	25/32	5/8	17/32	17/32	9/32	8-32	PH	SCL
5304E	11/32	11/16	7/8	17/32	9/32	8-32	PH	SCL
5450E	11/16	13/32	5/8	11/32	3/16	8-32	PH	-
5475E	1	1/2	15/16	7/16	9/32	8-32	PH	-

\*PH=Plain Hole BB=Brass Bushing \*\*SDL=Silver Disc Lined; L=Lined; SCL=Silver Cap Lined



Material type: Thermoset  
Inset diam.: 1/4 in.

## POINTER KNOBS

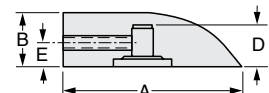


### FEATURES

- Phenolic material provides heat and impact resistance for durability
- Terrific range of styles and sizes
- Indicator line available on several of the pointer knobs for precise settings
- Samples available

Ohmite Part	Dimensions (inches)				Set screw	Insert diam.	Shaft hole*	Finish**
	A	B	D	E				
5400E	27/32	13/32	11/32	3/16	8-32	1/4	PH	-
5470E	1	1/2	7/16	9/32	8-32	1/4	PH	L
5500E	1 1/8	9/16	9/32	9/32	8-32	1/4	PH	L
5510E	3/4	9/16	13/32	7/32	8-32	1/4	PH	L
5511E	3/4	9/16	7/16	-	-	1/4***	Spring	L
5520E	1 1/2	3/4	5/8	5/16	8-32	1/4	PH	L
5521E	1 1/2	3/4	7/16	5/16	8-32	1/4	BB	L
5522E	1 1/8	5/8	7/16	9/32	8-32	1/4	PH	L
5600E	1 7/32	5/8	1/2	9/32	8-32	1/4	PH	-
5601E	1 7/32	5/8	1/2	9/32	8-32	1/4	PH	L
5602E	1 7/32	5/8	9/32	9/32	8-32	1/4	BB	L
5610E	1 3/16	1/2	7/16	7/32	8-32	1/4	PH	-

\*PH=Plain Hole BB=Brass Bushing \*\*L=Lined \*\*\*1/4" flatted to 5/32"



Material type: Thermoset

# Control Knobs

## SKIRTED KNOBS

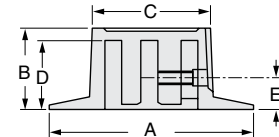
### FEATURES

- Available in phenolic to provide appearance, strength, and heat resistance for a variety of applications
- Sizes, shapes, decorative inlays, and graphics to enhance your products
- Engraving, hot stamping, and pad printing available
- Skirt adds level of decoration
- Samples available



Ohmite Part	Dimensions (inches)					Set screw	Shaft hole*	Finish**
	A	B	C	D	E			
5700E	1/2	5/8	15/32	1/2	3/16	6-32	PH	-
5701E	1/2	5/8	15/32	1/2	3/16	6-32	PH	L
5710E	3/4	1/2	17/32	13/32	7/32	8-32	PH	L
5713E	1 1/8	5/8	13/16	1/2	9/32	8-32	PH	L
5719E	1 1/8	5/8	1 1/4	1/2	9/32	8-32	BB	L
5730E	1 1/2	7/8	1 1/64	3/4	9/32	8-32	PH	SDL
5740E	2 1/32	15/16	1 3/8	13/16	5/16	8-32 (2)	PH	SDL
5800E	1 1/2	1 1/16	5/8	9/16	9/32	8-32	PH	L

\*PH=Plain Hole BB=Brass Bushing  
\*\*L=Lined SD=Silver Disc SDL=Silver Disc Lined



Material type: Thermoset  
Inset diam.: 1/4 in.

## TRANSILLUMINATED/SOFT TOUCH KNOBS

### FEATURES

- Soft thermoplastic elastomer
- Two shot molding process enables multiple materials to be embedded into one part
- Available in black TPE over white or clear indicator to provide comfort and style to your application
- Call for any other color or combination
- Matte finish



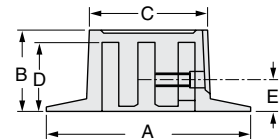
5940E, 5920E, 5930E

Ohmite Part	Dimensions (inches)				
	A	B	C	D	E
<b>Soft Touch Knobs</b>					
5940E	1 3/8	27/32	1 3/8	23/32	1/4
5920E	1 5/8	61/64	1 5/8	7/8	9/32
5930E	1 57/64	1	1 57/64	7/8	5/16



5941E, 5921E, 5931E

Ohmite Part	Dimensions (inches)				
	A	B	C	D	E
<b>Transilluminated Knobs</b>					
5941E	1 3/8	27/32	1 3/8	23/32	1/4
5921E	1 5/8	61/64	1 5/8	7/8	1/4
5931E	1 57/64	1	1 57/64	7/8	9/32



Material type: Thermoplastic overmold  
Inset diam.: 1/4 in.  
Set screw: 8-32  
Shaft hole: Brass bushing  
Finish: Matte

## CUSTOMIZATION



In order to save you time and money, Ohmite offers a wide array of secondary operations and finishing services. Most of our parts can be customized to your specific need. Our secondary operations and finishing services include:

- Hot Stamping
- Drilling
- Pad Printing
- Engraving
- Ultrasonic Welding
- Branding
- Paint Fill
- Decorative Pointers
- Machining
- Turning
- Tapping
- Bagging
- Buff and Polish
- Sand Blasting
- 3-D CAD Imaging
- Assembly
- Packaging
- Custom Color
- Matching
- Kitting
- Silk Screen
- Decorative Inlays
- Plating
- Vacuum Metalizing
- Paint Coatings

# Mouser Electronics

Authorized Distributor

Click to View Pricing, Inventory, Delivery & Lifecycle Information:

## Ohmite:

[5905E](#) [5610E](#) [5400E](#) [5200E](#) [5205E](#) [5450E](#) [5475E](#) [5520E](#) [5521E](#) [5522E](#) [5600E](#) [5601E](#) [5602E](#) [5700E](#) [5730E](#)  
[5740E](#) [5470E](#) [5510E](#) [5931E](#) [5300E](#) [5500E](#) [5800E](#) [5920E](#) [5240E](#) [5719E](#) [5302E](#) [5921E](#) [5250E](#) [5220E](#) [5940E](#)  
[5710E](#) [5713E](#) [5304E](#) [5210E](#) [5511E](#) [5941E](#) [5930E](#) [5701E](#)