

LAYERSCAPE® LX2160A COMMUNICATIONS PROCESSOR

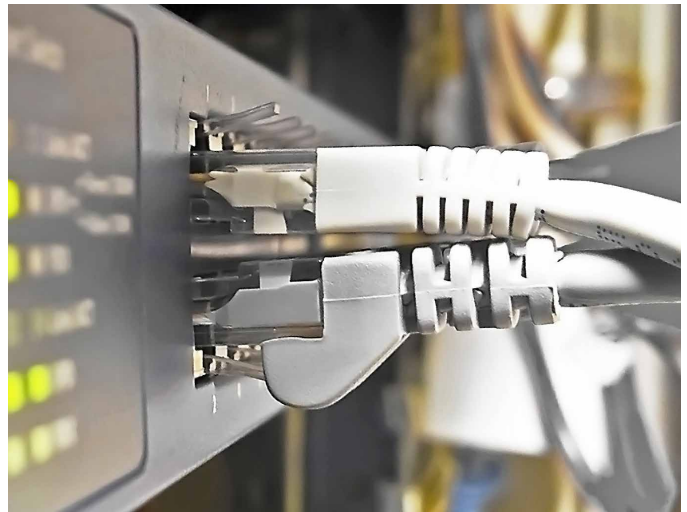
The Layerscape LX2160A SoC delivers the high performance needed for compute-intensive networking applications. Equipped with sixteen Arm®v8 Cortex®-A72 CPU cores, 25 GHz SerDes technology and low FinFET power, this processor supports up to 100 Gbit/s Ethernet and 50 Gbit/s security offload.

OVERVIEW

The LX2160A has everything needed for compute-intensive networking applications in a single chip. Sixteen 64-bit Armv8 A72 cores, high integration, and low power make it well-suited for applications that install datacenter-like processing into the highly-constrained power and board space budgets of networking equipment. An innovative caching structure stores packets on-chip until software is ready, minimizing external memory usage for lower latency, lower power, smaller footprint, and lower cost solutions. General-purpose processing capability is complemented with a 50 Gbit/s security engine and a 100 Gbit/s compression/compression engine. The wire rate I/O processor has 18 integrated MACs including dual 100 Gbit Ethernet ports and a 122 Gbit/s L2 switch. The LX2120A and LX2080A are pin-compatible family members that support 12 and 8 cores, respectively.

FEATURES

- 16 64-bit Armv8 Cortex-A72 CPU cores, running up to 2.2 GHz
- 16 MB cache
- 2 x DDR4 72b including ECC, to 3200 MT/s, maximum capacity of 256 GB
- 2 MB packet caching buffer
- 24 SerDes lanes, operating up to 25 GHz



- Up to 16 Ethernet ports
- Supported Ethernet speeds include 1, 2.5, 10, 25, 40, 50, and 100 Gbit/s
- 122 Gbit/s Layer 2 Ethernet switch
- Up to 24 PCIe Gen3 lanes, supporting six ports, as wide as x8
- 50 Gbit/s security accelerator
- 100 Gbit/s data compression/decompression engine
- 4 x SATA3.0
- Secure boot and Arm TrustZone technology
- SD, eMMC, 2 x DUART, 8 x I2C, 2 x USB3.0, 2 x CAN (FD optional)

TARGET APPLICATIONS

The LX2160A addresses traditional networking control and data plane, data center offload, 5G, industrial, and autonomous driving applications.

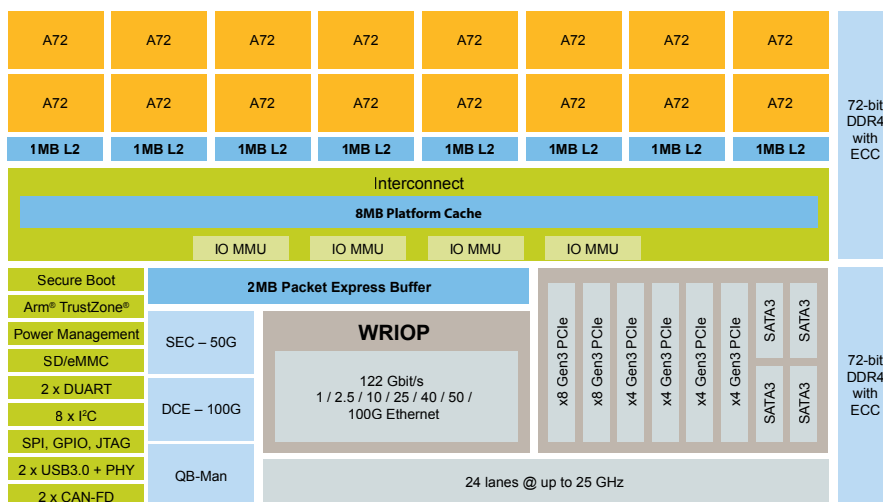


Application	Examples	Relevant Features
Autonomous driving	<ul style="list-style-type: none"> L2 - L4 compute engine Sensor data management Central connectivity hub 	<ul style="list-style-type: none"> AEC Q100 Grade 3 to 105 °C Product longevity to 2035 < 10 FIT reliability CAN Flexible Datarate
White box switching	<ul style="list-style-type: none"> Control plane for L2 switches in TOR and EOR applications Host VMs on the switch 	<ul style="list-style-type: none"> 50 Gbit/s IPsec offload Datacenter-friendly 25 GE ports
Data center offload	<ul style="list-style-type: none"> 2x 25 Gbps Network Interface Card Control plane on FPGA-based NIC 	<ul style="list-style-type: none"> PCIe x8 Gen3 with SR-IOV Low power due to FinFET process technology Data-center friendly 25 Gbit Ethernet ports
5G packet processing	<ul style="list-style-type: none"> C-RAN Macro base station O-RAN Central Unit O-RAN Distributed Unit and Radio Units in conjunction with NXP LA1200 baseband processor. 	<ul style="list-style-type: none"> PDCCP, transport, MAC/RLC software 30 Gbit/s IPsec elephant flow 50 Gbit/s LTE Air crypto Hardware QoS Reference design with LA1200 baseband processor

RELATED SOFTWARE

- Linux® SDK for Layerscape Processors
- CodeWarrior® Embedded Software Development Tools for Armv8 64-bit based Layerscape Series Processors

LAYERSCAPE LX2160A BLOCK DIAGRAM



LAYERSCAPE LX2 FAMILY MEMBERS

	LX2160A	LX2120A	LX2080A
Cores	16	12	8
L2 cache	8 MB	6 MB	8 MB
SerDes	24 at up to 25 GHz		
PCIe	6 x Gen3		
DDR	2 x DDR4, 3200 MT/s, 256 GB capacity		
Plat cache + PEB	10 MB		
WRIOP	122 Gbit/s L2 switch, supporting combinations of 16 ports of 1, 2.5, 10, 25, 40, 50 and 100 Gbit Ethernet		
SEC	50 Gbit/s		
DCE	100 Gbit/s		
Package	40 x 40 mm, 1517 pins		

www.nxp.com/LX2160A

NXP, the NXP logo, CodeWarrior and Layerscape are trademarks of NXP B.V. All other product or service names are the property of their respective owners. Arm, Cortex and TrustZone are registered trademarks of Arm Limited (or its subsidiaries) in the EU and/or elsewhere. All rights reserved. © 2022 NXP B.V.

Document Number: LX2160AFS REV 2
Date of Release: January 2022

Mouser Electronics

Authorized Distributor

Click to View Pricing, Inventory, Delivery & Lifecycle Information:

[NXP:](#)

[LX2160A-RDB-B](#)