


4

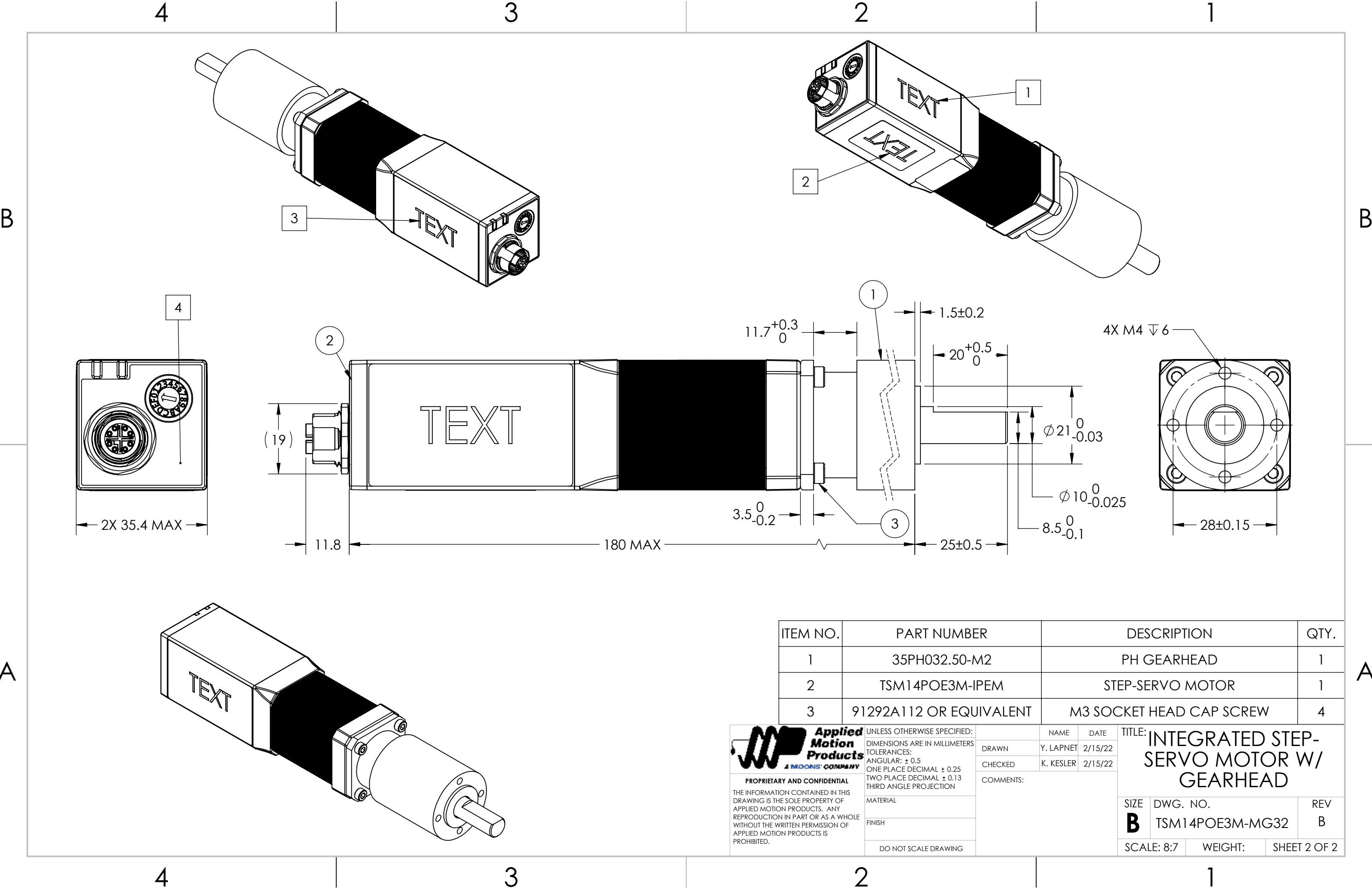
3

2


1

MOTOR SPECIFICATIONS:			
FRAME SIZE:	NEMA 14	ROTOR INERTIA (g-cm <sup>2</sup> /oz-in <sup>2</sup> ):	35.3/0.193 NOM
STEP ACCURACY ( ° )	± 0.09	INSULATION CLASS:	B (130°)
STEP ANGLE ( ° ):	1.8	BEARINGS:	ABEC 3, DOUBLE SHIELDED
INPUT VOLTAGE(VDC):	42.5 TO 57	APPROVALS:	CE, RoHS
GEARMOTOR SPECIFICATIONS:			
TEMP. RISE ( °C):	80 MAX	TOTAL WEIGHT (±10g/±0.35oz):	606.7/21.4
OPERATING AMB. TEMP. RANGE ( °C):	-20 to +50	RELATIVE HUMIDITY RANGE (%):	85 NON-CONDENSING
STORAGE TEMP. RANGE ( °C):	-20 to +70	IP RATING	IP20
GEARHEAD SPECIFICATIONS:			
RATIO:	32.49:1	EFFICIENCY (%):	81
MAX TORQUE CONTINUOUS (Nm/oz-in):	6/849.7	BACKLASH ( ° ):	≤1.2
MAX TORQUE (Nm/oz-in):	8/1132.9	MAX RADIAL LOAD (N/lbf):	≤200/44.96
MAX INPUT SPEED (RPM):	6000	MAX AXIAL LOAD (N/lbf):	≤200/44.96
GEARHEAD MATERIALS			
GEARTRAIN:	Y15(1213) STEEL		
HOUSING:	304 STAINLESS STEEL		
INPUT/OUTPUT FLANGE:	LY12 ALUMINUM		
OUPTUT SHAFT:	40Cr STEEL		
PINION:	Y15 (1213) STEEL		
NOTES, UNLESS OTHER WISE SPECIFIED:			
1 USE CURRENT REV OF 690-1274 LABEL.			
2 USE CURRENT REV OF 690-1279 LABEL.			
3 USE CURRENT REV OF 690-1280 LABEL.			
4 USE CURRENT REV OF 690-1285 LABEL.			
5. THIS ASSEMBLY IS MANUFACTURED IN COMPLIANCE WITH THE CURRENT EU RoHS DIRECTIVE.			
6. ALL SPECIFICATIONS AND OPERATING INSTRUCTIONS CAN BE FOUND AT APPLIED-MOTION.COM.			
<div><div><div><div></div><div>PROPRIETARY AND CONFIDENTIAL</div><div>THE INFORMATION CONTAINED IN THIS DRAWING IS THE SOLE PROPERTY OF APPLIED MOTION PRODUCTS. ANY REPRODUCTION IN PART OR AS A WHOLE WITHOUT THE WRITTEN PERMISSION OF APPLIED MOTION PRODUCTS IS PROHIBITED.</div></div><div><div>UNLESS OTHERWISE SPECIFIED:</div><div>DIMENSIONS ARE IN MILLIMETERS</div><div>TOLERANCES:</div><div>ANGULAR: ± 0.5</div><div>ONE PLACE DECIMAL ± 0.25</div><div>TWO PLACE DECIMAL ± 0.13</div><div>THIRD ANGLE PROJECTION</div><div>MATERIAL</div><div>FINISH</div><div>DO NOT SCALE DRAWING</div></div></div><div><div><div></div><div>NAME</div><div>DATE</div></div><div><div>DRAWN</div><div>Y. LAPNET</div><div>2/15/22</div></div><div><div>CHECKED</div><div>K. KESLER</div><div>2/15/22</div></div><div>COMMENTS:</div></div><div><div>TITLE:</div><div>INTEGRATED STEP-SERVO MOTOR W/ GEARHEAD</div><div><div>SIZE</div><div>B</div></div><div><div>DWG. NO.</div><div>TSM14POE3M-MG32</div></div><div><div>REV</div><div>B</div></div><div><div>SCALE: 8:7</div><div>WEIGHT:</div><div>SHEET 1 OF 2</div></div></div></div>			

REVISIONS				
ECO #	REV.	DESCRIPTION	DATE	APPROVED
7935	A	INITIAL RELEASE	7/2/18	J.KORDIK
8750	B	REDRAWN IN SOLIDWORKS	2/15/22	L. LIU



ITEM NO.	PART NUMBER	DESCRIPTION	QTY.
1	35PH032.50-M2	PH GEARHEAD	1
2	TSM14POE3M-IPEM	STEP-SERVO MOTOR	1
3	91292A112 OR EQUIVALENT	M3 SOCKET HEAD CAP SCREW	4

 <b>Applied Motion Products</b> <small>A MOONS' COMPANY</small>  <b>PROPRIETARY AND CONFIDENTIAL</b>  THE INFORMATION CONTAINED IN THIS DRAWING IS THE SOLE PROPERTY OF APPLIED MOTION PRODUCTS. ANY REPRODUCTION IN PART OR AS A WHOLE WITHOUT THE WRITTEN PERMISSION OF APPLIED MOTION PRODUCTS IS PROHIBITED.	UNLESS OTHERWISE SPECIFIED: DIMENSIONS ARE IN MILLIMETERS TOLERANCES: ANGULAR: ± 0.5 ONE PLACE DECIMAL ± 0.25 TWO PLACE DECIMAL ± 0.13 THIRD ANGLE PROJECTION		NAME	DATE	TITLE: INTEGRATED STEP-SERVO MOTOR W/ GEARHEAD			
	MATERIAL		DRAWN	Y. LAPNET				2/15/22
	FINISH		CHECKED	K. KESLER	2/15/22	SIZE DWG. NO. REV <b>B</b> TSM14POE3M-MG32 B		
	DO NOT SCALE DRAWING		COMMENTS:					
				SCALE: 8:7		WEIGHT:		SHEET 2 OF 2

# Mouser Electronics

Authorized Distributor

Click to View Pricing, Inventory, Delivery & Lifecycle Information:

[Applied Motion:](#)

[TSM14POE3M-MG32](#)