

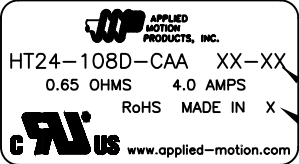
SPECIFICATIONS:	
STEPS PER REVOLUTION: 200	ROTOR INERTIA: 900 G-CM <sup>2</sup> (4.91 OZ-IN <sup>2</sup> ) REF
STEP ANGLE: 1.8°	HOLDING TORQUE: 2.5 N-m (354 OZ-IN) MIN <span style="border: 1px solid black; padding: 0 2px;">1</span>
STEP TO STEP ACCURACY: ±5 % <span style="border: 1px solid black; padding: 0 2px;">1</span> , <span style="border: 1px solid black; padding: 0 2px;">2</span>	DETENT TORQUE: 100 mN-m (14.1 OZ-IN) MIN
POSITIONAL ACCURACY: ±5 % <span style="border: 1px solid black; padding: 0 2px;">1</span> , <span style="border: 1px solid black; padding: 0 2px;">3</span>	
HYSTERESIS: - %	INSULATION CLASS: B
WINDING RESISTANCE: 0.65 OHM ±10% AT 20° <span style="border: 1px solid black; padding: 0 2px;">12</span>	BEARINGS: ABEC 3, DOUBLE SHIELDED
WINDING INDUCTANCE: 2.4 mH ± 20% <span style="border: 1px solid black; padding: 0 2px;">7</span>	WEIGHT: 1400 G (3 LBS) APPROXIMATE
PHASE VOLTAGE: 2.6 VDC	TEMP. RISE: 80°C MAX. <span style="border: 1px solid black; padding: 0 2px;">8</span>
PHASE CURRENT: 4.0 AMP (RATED)	OPERATING TEMP. RANGE: -20 TO +50 °C
NUMBER OF PHASES: 2	STORAGE TEMP. RANGE: -30 TO +70 °C
SHAFT RUNOUT: 0.03 T.I.R.	RELATIVE HUMIDITY RANGE: 15 TO 85 %
RADIAL PLAY: 0.02mm MAX WITH .5KG RADIAL LOAD.	
END PLAY: 0.08mm MAX WITH .5KG AXIAL LOAD.	

HT24-108D-CAA

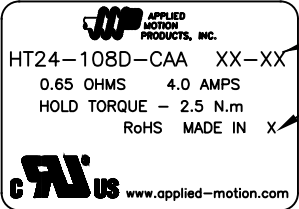
REVISIONS				
ECO NO.	REV	DESCRIPTION	DATE	APPROVED
7710	A	INITIAL RELEASE	9/27/17	J KORDIK
7877	B	DIMENSION MISSING	3/8/18	J KORDIK

NOTES, UNLESS OTHERWISE SPECIFIED:

- 1 MEASUREMENTS MADE AT RATED CURRENT IN EACH PHASE.
- 2 BETWEEN ANY TWO ADJACENT STEP POSITIONS.
- 3 MAXIMUM ERROR IN 360°.
4. HIPOT 500 VAC, 60 Hz FOR ONE MINUTE.
- 5 LEADS: 4, 22 AWG, 7 STRAND MIN., UL AND CSA APPROVED, UL 1430 OR UL 1007.
6. INSULATION RESISTANCE: 100 MEGAOHMS MIN AT 500 VDC.
- 7 AS MEASURED USING AN A.C. INDUCTANCE BRIDGE, AT 1KHz.
- 8 AS MEASURED BY THE CHANGE IN RESISTANCE METHOD, WITH RATED VOLTAGE APPLIED TO 2 PHASES; WITH MOTOR AT REST.
- 9 ENCODER 970-1024 INSTALLED PER AMP ASSEMBLY PRACTICES. ENCODER CABLE SOLD SEPARATELY.
10. THIS MOTOR IS MANUFACTURED IN COMPLIANCE WITH THE CURRENT EU RoHS DIRECTIVE.
- 11 MOTOR LABEL TO INCLUDE "ROHS" COMPLIANT, 'MADE IN (COUNTRY OF ORIGIN)' AND DATE CODE.
- 12 AS MEASURED ACROSS ANY WINDING.
13. OTHER TAPPED HOLES MAY BE PRESENT ON REAR OF MOTOR.

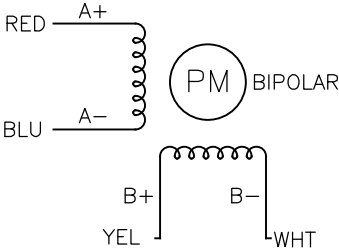


LABEL DETAIL  
BOTH OPTIONS ACCEPTABLE

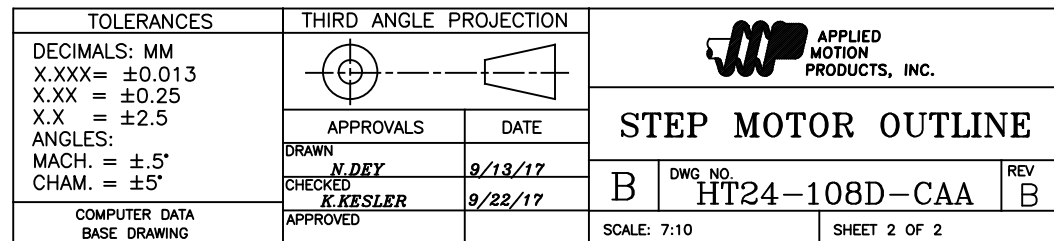
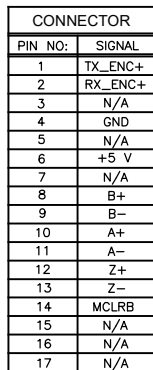


SWITCHING SEQUENCE FOR CW ROTATION  
FACING MOUNTING END

STEP	A+	B+	A-	B-
1	+	+	-	-
2	-	+	+	-
3	-	-	+	+
4	+	-	-	+



CONTRACT NO.				
APPROVALS	DATE	<h2>STEP MOTOR OUTLINE</h2>		
DRAWN <i>N.DEY</i>	9/13/17			
CHECKED <i>K.KESLER</i>	9/22/17	<div>B</div> <div>COMPUTER DATA BASE DRAWING</div> <div>DWG NO. HT24-108D-CAA</div> <div>REV B</div>		
APPROVED				
APPROVED		SCALE: 7:10	SHEET 1 OF 2	



# Mouser Electronics

Authorized Distributor

Click to View Pricing, Inventory, Delivery & Lifecycle Information:

[Applied Motion:](#)

[HT24-108D-CAA](#)