

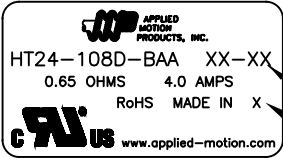
SPECIFICATIONS:	
STEPS PER REVOLUTION: 200	ROTOR INERTIA: 900 G-CM <sup>2</sup> (4.91 OZ-IN <sup>2</sup> ) REF
STEP ANGLE: 1.8°	HOLDING TORQUE: 2.5 N-m (354 OZ-IN) MIN <sup>1</sup>
STEP TO STEP ACCURACY: ±5 % <sup>1</sup> , <sup>2</sup>	DETENT TORQUE: 100 mN-m (14.1 OZ-IN) MIN
POSITIONAL ACCURACY: ±5 % <sup>1</sup> , <sup>3</sup>	
HYSTERESIS: - %	INSULATION CLASS: B
WINDING RESISTANCE: 0.65 OHM ±10% AT 20° <sup>12</sup>	BEARINGS: ABEC 3, DOUBLE SHIELDED
WINDING INDUCTANCE: 2.4 mH ± 20% <sup>7</sup>	WEIGHT: 1400 G (3 LBS) APPROXIMATE
PHASE VOLTAGE: 2.6 VDC	TEMP. RISE: 80°C MAX. <sup>8</sup>
PHASE CURRENT: 4.0 AMP (RATED)	OPERATING TEMP. RANGE: -20 TO +50 °C
NUMBER OF PHASES: 2	STORAGE TEMP. RANGE: -30 TO +70 °C
SHAFT RUNOUT: 0.03 T.I.R.	RELATIVE HUMIDITY RANGE: 15 TO 85 %
RADIAL PLAY: 0.02mm MAX WITH .5KG RADIAL LOAD.	
END PLAY: 0.08mm MAX WITH .5KG AXIAL LOAD.	

HT24-108D-BAA

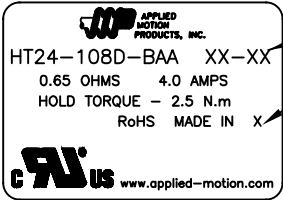
REVISIONS				
ECO NO.	REV	DESCRIPTION	DATE	APPROVED
7747	A	INITIAL RELEASE	12/20/17	J.KORDIK

NOTES, UNLESS OTHERWISE SPECIFIED:

- <sup>1</sup> MEASUREMENTS MADE AT RATED CURRENT IN EACH PHASE.
- <sup>2</sup> BETWEEN ANY TWO ADJACENT STEP POSITIONS.
- <sup>3</sup> MAXIMUM ERROR IN 360°.
4. HIPOT 500 VAC, 60 Hz FOR ONE MINUTE.
- <sup>5</sup> LEADS: 4, 22 AWG, 7 STRAND MIN., UL AND CSA APPROVED, UL 1430 OR UL 1007.
6. INSULATION RESISTANCE: 100 MEGAOHMS MIN AT 500 VDC.
- <sup>7</sup> AS MEASURED USING AN A.C. INDUCTANCE BRIDGE, AT 1KHz.
- <sup>8</sup> AS MEASURED BY THE CHANGE IN RESISTANCE METHOD, WITH RATED VOLTAGE APPLIED TO 2 PHASES; WITH MOTOR AT REST.
- <sup>9</sup> ENCODER 970-1028 INSTALLED PER AMP ASSEMBLY PRACTICES. ENCODER CABLE SOLD SEPARATELY.
10. THIS MOTOR IS MANUFACTURED IN COMPLIANCE WITH THE CURRENT EU RoHS DIRECTIVE.
- <sup>11</sup> MOTOR LABEL TO INCLUDE "ROHS" COMPLIANT, 'MADE IN (COUNTRY OF ORIGIN)' AND DATE CODE.
- <sup>12</sup> AS MEASURED ACROSS ANY WINDING.
13. OTHER TAPPED HOLES MAY BE PRESENT ON REAR OF MOTOR.



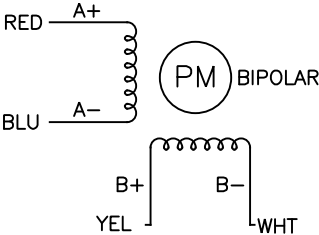
LABEL DETAIL  
BOTH OPTIONS ACCEPTABLE



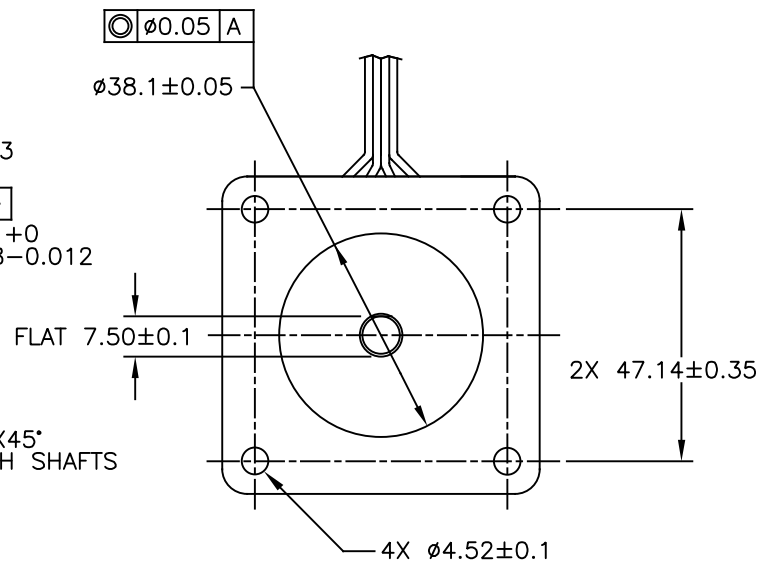
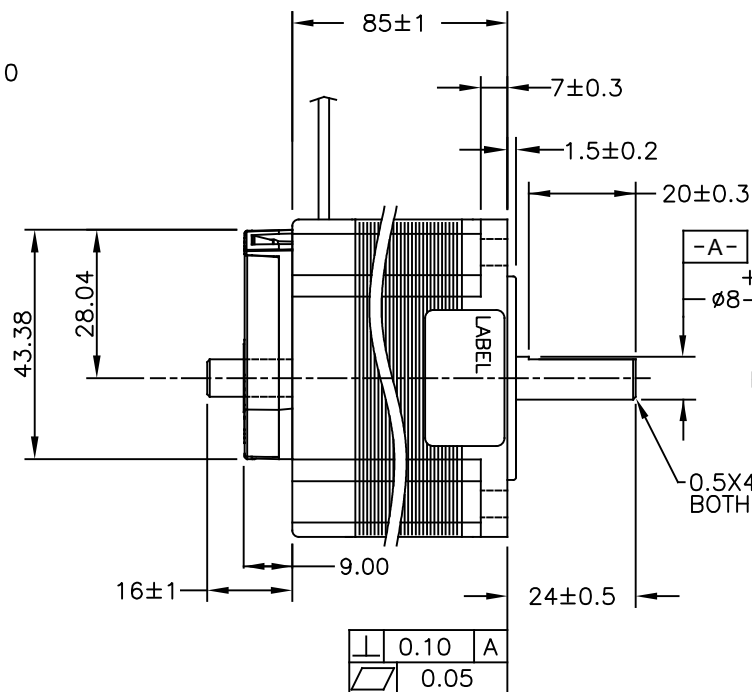
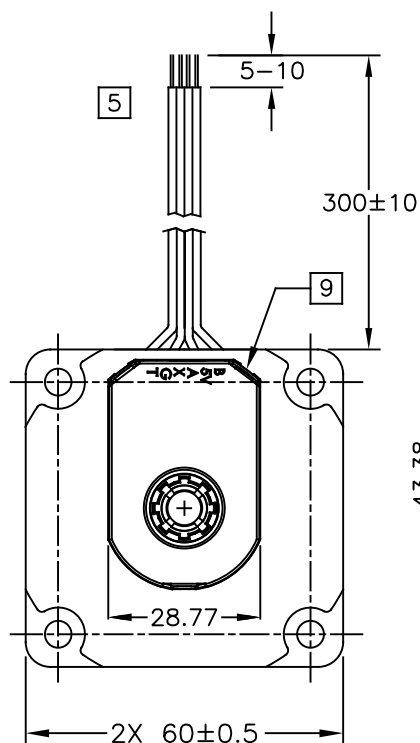
<sup>11</sup>

SWITCHING SEQUENCE FOR CW ROTATION  
FACING MOUNTING END

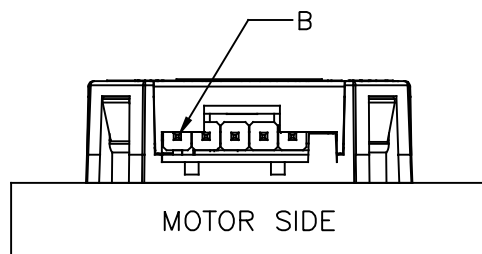
STEP	A+	B+	A-	B-
1	+	+	-	-
2	-	+	+	-
3	-	-	+	+
4	+	-	-	+




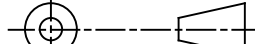
CONTRACT NO.		APPLIED MOTION PRODUCTS, INC.		
APPROVALS	DATE	<div>STEP MOTOR OUTLINE</div>		
DRAWN <i>N.DEY</i>	10/26/17			
CHECKED <i>K.KESLER</i>	12/20/17			
APPROVED <i>J.KORDIK</i>	12/20/17			
APPROVED				
SCALE: NONE		COMPUTER DATA BASE DRAWING	DWG NO. HT24-108D-BAA	REV A
SHEET 1 OF 2				



CONNECTOR	
PIN NO:	SIGNAL
B	B CHANNEL
5V	+5 V
A	A CHANNEL
X	INDEX CHANNEL
G	GND
T	UNUSED



0.10	A
0.05	

TOLERANCES		THIRD ANGLE PROJECTION		 <b>APPLIED MOTION PRODUCTS, INC.</b>		
DECIMALS: MM X.XXX= ±0.013 X.XX = ±0.25 X.X = ±2.5 ANGLES: MACH. = ±5° CHAM. = ±5°						
COMPUTER DATA BASE DRAWING		APPROVALS	DATE	<b>STEP MOTOR OUTLINE</b>		
		DRAWN <i>N. DEY</i>	10/26/17			
		CHECKED <i>K. KESLER</i>	12/20/17	B	DWG. NO. HT24-108D-BAA	REV A
		APPROVED <i>J. KORDIK</i>	12/20/17			

# Mouser Electronics

Authorized Distributor

Click to View Pricing, Inventory, Delivery & Lifecycle Information:

[Applied Motion:](#)

[HT24-108D-BAA](#)