

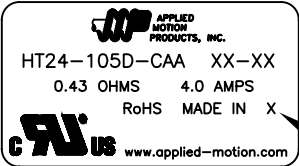
SPECIFICATIONS:	
STEPS PER REVOLUTION: 200	ROTOR INERTIA: 450 G-CM <sup>2</sup> (2.45 OZ-IN <sup>2</sup> ) REF
STEP ANGLE: 1.8°	HOLDING TORQUE: 1.25N-m (177 OZ-IN) MIN <span style="border: 1px solid black; padding: 0 2px;">1</span>
STEP TO STEP ACCURACY: ±5 % <span style="border: 1px solid black; padding: 0 2px;">1</span> , <span style="border: 1px solid black; padding: 0 2px;">2</span>	DETENT TORQUE: 90 mN-m (12.7 OZ-IN) MIN
POSITIONAL ACCURACY: ±5 % <span style="border: 1px solid black; padding: 0 2px;">1</span> , <span style="border: 1px solid black; padding: 0 2px;">3</span>	
HYSTERESIS: - %	INSULATION CLASS: B
WINDING RESISTANCE: 0.43 OHM ±10% AT 20° <span style="border: 1px solid black; padding: 0 2px;">12</span>	BEARINGS: ABEC 3, DOUBLE SHIELDED
WINDING INDUCTANCE: 1.1 mH ± 20% <span style="border: 1px solid black; padding: 0 2px;">7</span>	WEIGHT: 830 G (29 OZ) APPROXIMATE
PHASE VOLTAGE: 1.72VDC	TEMP. RISE: 80°C MAX. <span style="border: 1px solid black; padding: 0 2px;">8</span>
PHASE CURRENT: 4.0 AMP (RATED)	OPERATING TEMP. RANGE: -20 TO +50 °C
NUMBER OF PHASES: 2	STORAGE TEMP. RANGE: -30 TO +70 °C
SHAFT RUNOUT: 0.03 T.I.R.	RELATIVE HUMIDITY RANGE: 15 TO 85 %
RADIAL PLAY: 0.02mm MAX WITH .5KG RADIAL LOAD.	
END PLAY: 0.08mm MAX WITH .5KG AXIAL LOAD.	

HT24-105D-CAA

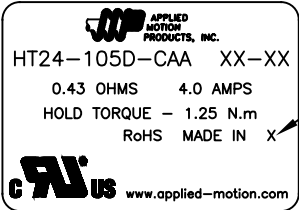
REVISIONS				
ECO NO.	REV	DESCRIPTION	DATE	APPROVED
7710	A	INITIAL RELEASE	9/27/17	J KORDIK
7877	B	DIMENSION MISSING	3/8/18	J KORDIK

NOTES, UNLESS OTHERWISE SPECIFIED:

- 1 MEASUREMENTS MADE AT RATED CURRENT IN EACH PHASE.
- 2 BETWEEN ANY TWO ADJACENT STEP POSITIONS.
- 3 MAXIMUM ERROR IN 360°.
- 4. HIPOT 500 VAC, 60 Hz FOR ONE MINUTE.
- 5 LEADS: 4, 22 AWG, 7 STRAND MIN.,UL AND CSA APPROVED, UL 1430 OR UL 1007.
- 6. INSULATION RESISTANCE: 100 MEGAOHMS MIN AT 500 VDC.
- 7 AS MEASURED USING AN A.C. INDUCTANCE BRIDGE, AT 1KHz.
- 8 AS MEASURED BY THE CHANGE IN RESISTANCE METHOD, WITH RATED VOLTAGE APPLIED TO 2 PHASES; WITH MOTOR AT REST.
- 9 ENCODER 970-1024 INSTALLED PER AMP ASSEMBLY PRACTICES. ENCODER CABLE SOLD SEPARATELY.
- 10. THIS MOTOR IS MANUFACTURED IN COMPLIANCE WITH THE CURRENT EU RoHS DIRECTIVE.
- 11 MOTOR LABEL TO INCLUDE "ROHS" COMPLIANT, 'MADE IN (COUNTRY OF ORIGIN)' AND DATE CODE.
- 12 AS MEASURED ACROSS ANY WINDING.
- 13. OTHER TAPPED HOLES MAY BE PRESENT ON REAR OF MOTOR.



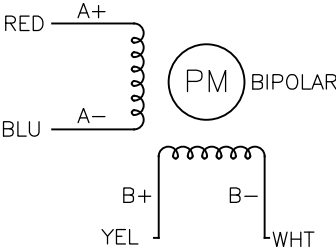
LABEL DETAIL  
BOTH OPTIONS ACCEPTABLE



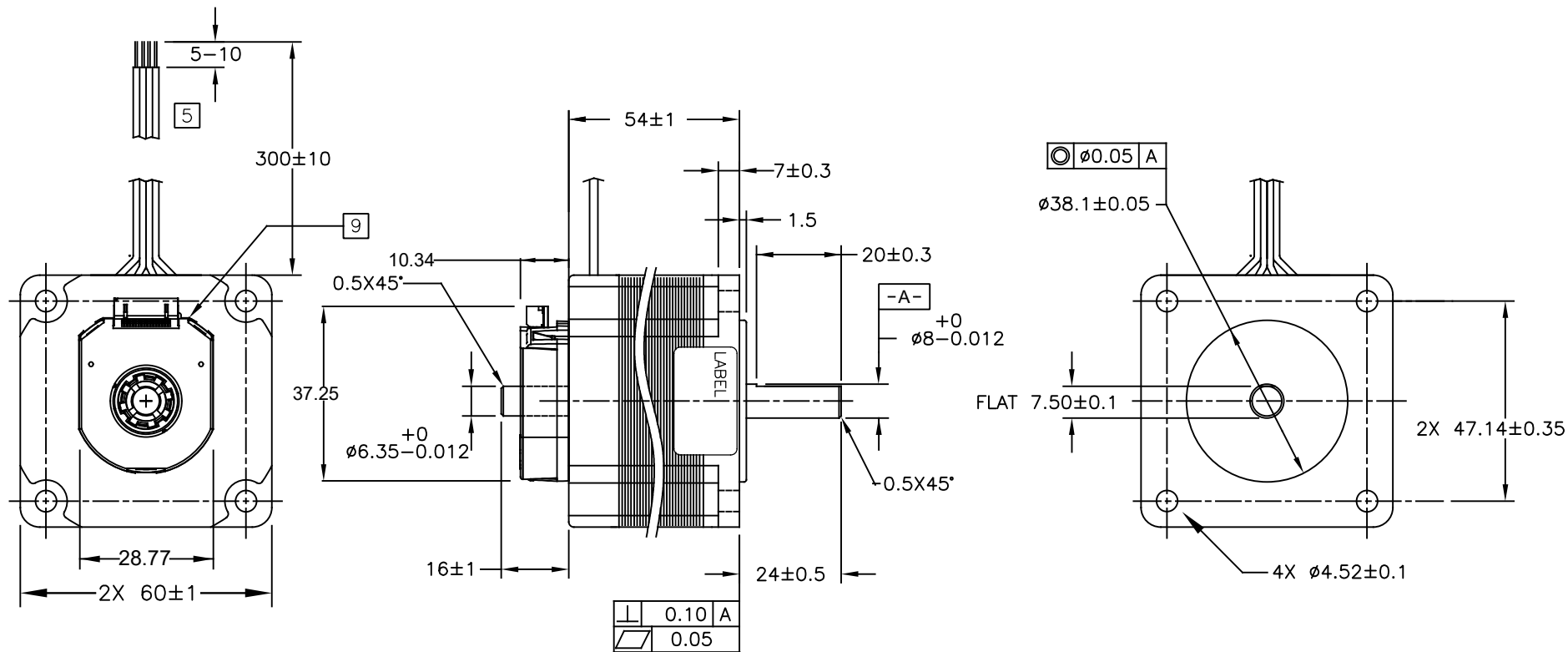
11

SWITCHING SEQUENCE FOR CW ROTATION  
FACING MOUNTING END

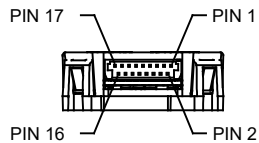
STEP	A+	B+	A-	B-
1	+	+	-	-
2	-	+	+	-
3	-	-	+	+
4	+	-	-	+

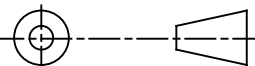


CONTRACT NO.				
APPROVALS	DATE	STEP MOTOR OUTLINE		
DRAWN <i>N.DEY</i>	9/13/17			
CHECKED <i>K.KESLER</i>	9/22/17	<div style="display: flex; justify-content: space-between;"> <span>B</span> <div>COMPUTER DATA BASE DRAWING</div> <div>DWG NO. HT24-105D-CAA</div> <div>REV B</div> </div>		
APPROVED				
APPROVED		SCALE: 7:10	SHEET 1 OF 2	



CONNECTOR	
PIN NO:	SIGNAL
1	TX_ENC+
2	RX_ENC+
3	N/A
4	GND
5	N/A
6	+5 V
7	N/A
8	B+
9	B-
10	A+
11	A-
12	Z+
13	Z-
14	MCLR B
15	N/A
16	N/A
17	N/A



TOLERANCES		THIRD ANGLE PROJECTION		APPLIED MOTION PRODUCTS, INC.		
DECIMALS: MM X.XXX = $\pm 0.013$ X.XX = $\pm 0.25$ X.X = $\pm 2.5$ ANGLES: MACH. = $\pm .5^\circ$ CHAM. = $\pm 5^\circ$				<b>STEP MOTOR OUTLINE</b>		
				SCALE: 7:10		
				SHEET 2 OF 2		
COMPUTER DATA BASE DRAWING		APPROVED		DWG. NO. HT24-105D-CAA		
				REV B		

# Mouser Electronics

Authorized Distributor

Click to View Pricing, Inventory, Delivery & Lifecycle Information:

[Applied Motion:](#)

[HT24-105D-CAA](#)