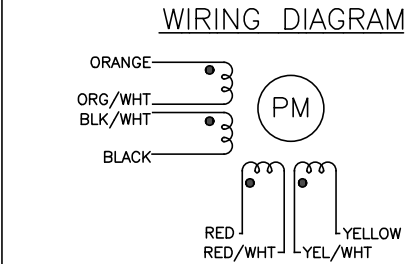


SPECIFICATIONS:	
STEPS PER REVOLUTION: 200	ROTOR INERTIA: 460 G-CM ² (6.51E-03 oz-in-sec ²)NOM
STEP ANGLE: 1.8°	DETENT TORQUE: 0.070 N-m (9.91 oz-in) MIN
STEP TO STEP ACCURACY:±0.09 DEGREES [1] , [2]	INSULATION CLASS: B
RADIAL PLAY:0.02 mm MAX W/.5KG RADIAL LOAD	WEIGHT: 1.0 KG (2.2 LB)
TEMP. RISE: 80 °C MAX. [8]	OPERATING TEMP. RANGE: -20 TO +50 °C
RELATIVE HUMIDITY RANGE: 15 TO 85 %	STORAGE TEMP. RANGE: -30 TO +70 °C

SPECIFICATION CONNECTION	[3]	[7]	[1]	[1]
	RESISTANCE PER PHASE OHM ±10%	INDUCTANCE PER PHASE mH ±20%	RATED CURRENT Amp	HOLDING TORQUE N-m Min oz-in Min
BI-POLAR SERIES	2.0	6.8	2.12	1.90 269
BI-POLAR PARALLEL	0.5	1.7	4.24	1.90 269
UNI-POLAR	1.0	1.7	3.00	1.35 191

- NOTES, UNLESS OTHERWISE SPECIFIED:
- [1] MEASUREMENTS MADE AT RATED CURRENT IN BOTH PHASES.
 - [2] BETWEEN ANY TWO ADJACENT FULL STEP POSITIONS.
 - [3] MEASUREMENTS MADE AT LEAD ENDS.
 - 4. HIPOT 500 VAC, 60 Hz FOR ONE MINUTE.
 - 5. LEADS: 8, 22 AWG, 7 STRAND MIN., UL AND CSA APPROVED, UL 1430 OR UL 3265.
 - 6. INSULATION RESISTANCE: 100 MEGOHMS MIN AT 500 VDC.
 - [7] AS MEASURED ACROSS ANY WINDING USING AN A.C. INDUCTANCE BRIDGE, AT 1 kHz. MEASUREMENTS MADE AT LEAD ENDS.
 - [8] AS MEASURED BY THE CHANGE IN RESISTANCE METHOD, WITH RATED VOLTAGE APPLIED TO 2 PHASES; WITH MOTOR AT REST.
 - [9] ENCODER 970-1001 INSTALLED PER AMP ASSEMBLY PRACTICES. ENCODER CABLE SOLD SEPARATELY..
 - 10. THIS MOTOR TO BE MANUFACTURED IN COMPLIANCE WITH EU DIRECTIVE "ROHS 2002/95/EC".
 - [11] MOTOR LABEL TO INCLUDE "ROHS" COMPLIANT, 'MADE IN (COUNTRY OF ORIGIN)' AND DATE CODE.



BI-POLAR, FULL STEP, 2 PHASE ON


STEP	ORANGE & BLK/WHT	BLACK & ORG/WHT	RED & YEL/WHT	YELLOW & RED/WHT
0	+	-	+	-
1	-	+	+	-
2	-	+	-	+
3	+	-	-	+
4	+	-	+	-

SWITCHING SEQUENCE FOR ROTATION FACING MOUNTING END.

HT23-601D-ZAA

REVISIONS				
ECO NO.	REV	DESCRIPTION	DATE	APPROVED
6941	A	INITIAL RELEASE	6/16/14	J KORDIK
8034	B	CHG REAR SHAFT LENGTH/TYPO	8/28/18	M.Maroney

LABEL DETAIL



APPLIED
MOTION
PRODUCTS, INC.

HT23-601D-ZAA XX-XX

SERIES - 2.12A/2.0 OHM


PARALLEL - 4.24A/0.5 OHM

HOLD. TORQUE - 1.90 N.m

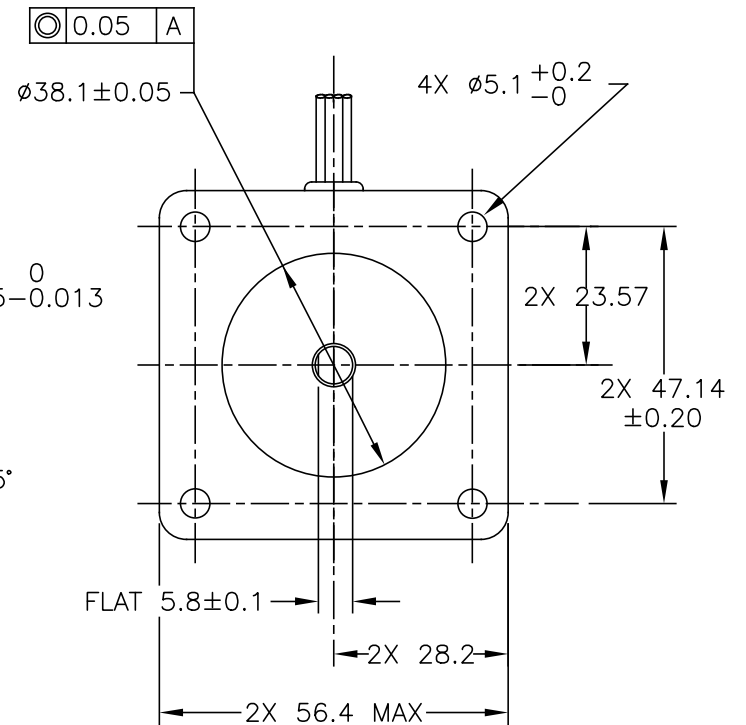
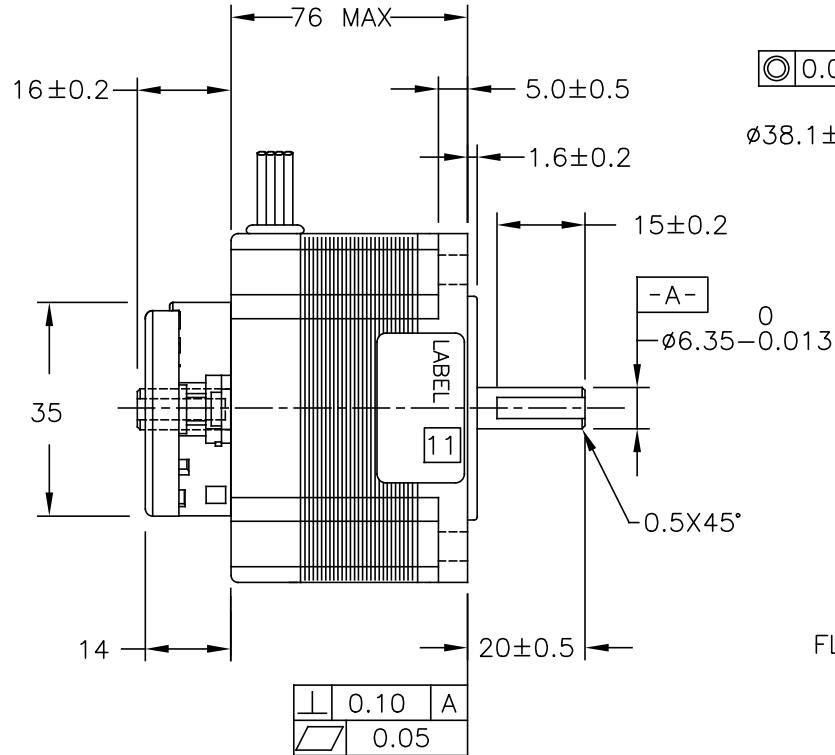
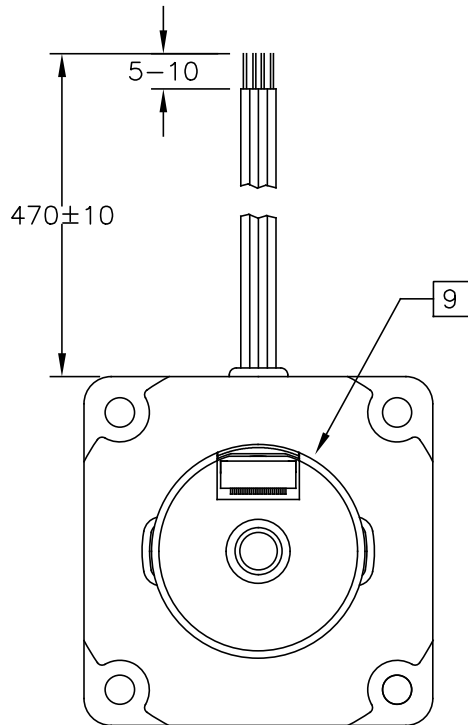
RoHS MADE IN X

www.applied-motion.com

[11]

CONTRACT NO. -		 APPLIED MOTION PRODUCTS, INC.	
APPROVALS	DATE	<div>STEP MOTOR OUTLINE</div> <div> <div>B</div> <div>COMPUTER DATA BASE DRAWING</div> <div>DWG NO. HT23-601D-ZAA</div> <div>REV B</div> </div>	
DRAWN R.JONEZ	3/18/14		
CHECKED			
APPROVED			
APPROVED		SCALE: NONE	SHEET 1 OF 2

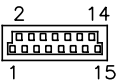
MOTOR DRAWING


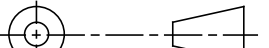


ENCODER RESOLUTION: 2000 cpr
WITH MARKER PULSE.

ENCODER PINOUTS

PIN	SIGNAL
1	CH A
2	CH A-
3	CH B
4	CH B-
5	INDEX
6	INDEX-
7	N/C
8	N/C
9	N/C
10	N/C
11	N/C
12	N/C
13	+Vcc
14	GND
15	N/C



TOLERANCES		THIRD ANGLE PROJECTION		 APPLIED MOTION PRODUCTS, INC.		
DECIMALS: MM (INCH) X.XXX= ± (.005) X.XX = ±0.13 (.010) X.X = ±0.25 (.020) ANGLES: MACH. = ±.5° CHAM. = ±5°						
		APPROVALS	DATE	STEP MOTOR OUTLINE		
		DRAWN R.JONEZ	3/18/14			
		CHECKED		B	DWG NO. HT23-601D-ZAA	REV B
COMPUTER DATA BASE DRAWING		APPROVED			SCALE: NONE	SHEET 2 OF 2

Mouser Electronics

Authorized Distributor

Click to View Pricing, Inventory, Delivery & Lifecycle Information:

[Applied Motion:](#)

[HT23-601D-ZAA](#)