

SPECIFICATIONS:	
NUMBER OF PHASES: 4	ROTOR INERTIA: 260 g-cm ² (1.42 oz-in ²) NOM
STEPS PER REVOLUTION: 200	DETENT TORQUE: 40 mNm (5.66 oz-in) MIN
STEP ANGLE: 1.8°	INSULATION CLASS: B
STEP TO STEP ACCURACY: ±0.09°	BEARINGS: ABEC 3, DOUBLE SHIELDED
POSITIONAL ACCURACY: ±0.09°	TEMP. RISE: 80 °C MAX.
HYSTERESIS: N/A%	OPERATING TEMP. RANGE: -20 TO +50 °C
SHAFT RUNOUT: 0.05 mm T.I.R. MAX	STORAGE TEMP. RANGE: -30 TO +70 °C
RADIAL PLAY: 0.02 mm MAX (.5KG RADIAL LOAD)	RELATIVE HUMIDITY RANGE: 15 TO 85 %
END PLAY: 0.08 mm MAX (.5KG AXIAL LOAD)	WEIGHT: 1.11 kg (2.45 lb)

SPECIFICATION	7	8	1	1
CONNECTION	RESISTANCE PER PHASE (ohm ±10%)	INDUCTANCE PER PHASE (mH ±20%)	RATED CURRENT (amp)	HOLDING TORQUE (Nm MIN)
UNI-POLAR	0.9	1.4	3.00	0.85
BI-POLAR SERIES	1.7	5.7	2.12	1.12
BI-POLAR PARALLEL	0.4	1.4	4.24	1.12

NOTES, UNLESS OTHERWISE SPECIFIED:

- MEASUREMENTS MADE AT RATED CURRENT IN EACH PHASE.
- BETWEEN ANY TWO ADJACENT FULL STEP POSITIONS.
- MAXIMUM ERROR IN 360°.
- HIPOT 500 VAC, 60 Hz FOR ONE MINUTE.
- LEADS: 8, AWG 20, 7 STRAND MIN., UL AND CSA APPROVED, UL 3266 OR UL 3265
- INSULATION RESISTANCE: 100 MEGOHMS MIN AT 500 VDC.
- AS MEASURED ACROSS EACH PHASE.
- AS MEASURED ACROSS EACH PHASE USING AN A.C. INDUCTANCE BRIDGE AT 1 KHz.
- AS MEASURED BY THE CHANGE IN RESISTANCE METHOD, WITH RATED CURRENT APPLIED TO 2 PHASES; WITH MOTOR AT REST.
- BRAKE ATTACHED TO REAR END OF MOTOR.
- TWO BRAKE LEADS ARE AWG24, UL1332, RED="+".
- ROTOR & STATOR LAMINATED CONSTRUCTION.
- THIS MOTOR TO BE MANUFACTURED IN COMPLIANCE WITH THE CURRENT EU RoHS DIRECTIVE.
- MOTOR LABEL TO INCLUDE "ROHS" COMPLIANT, AMP P/N, 'MADE IN (COUNTRY OF ORIGIN)', AND DATE CODE.
- HI TORQUE MOTOR DESIGN.

BRAKE SPECIFICATIONS

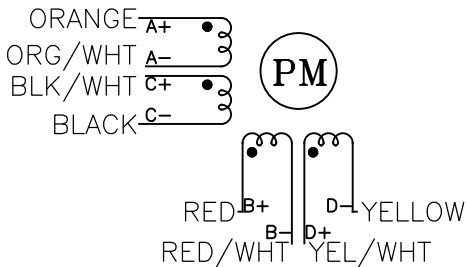
VOLTAGE	CURRENT	POWER	TORQUE	MAX. SPEED	ENGAGE DELAY	DISENGAGE DELAY	INSULATION CLASS
24DC	167 mA	4 W	1.5 Nm	1000 RPM	50 ms	50 ms	B

FULL STEP SWITCHING SEQUENCE
BI-POLAR SERIES, FACING MOUNTING END

2 PHASE ON WITH A- WIRE CONNECTED TO C+
WIRE AND B- WIRE CONNECTED TO D+ WIRE.

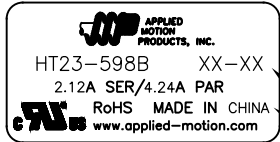
STEP	A+	C-	B+	D-
0	+	-	+	-
1	-	+	+	-
2	-	+	-	+
3	+	-	-	+
4	+	-	+	-

CCW
↑

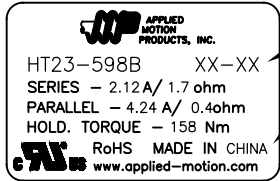


HT23-598B

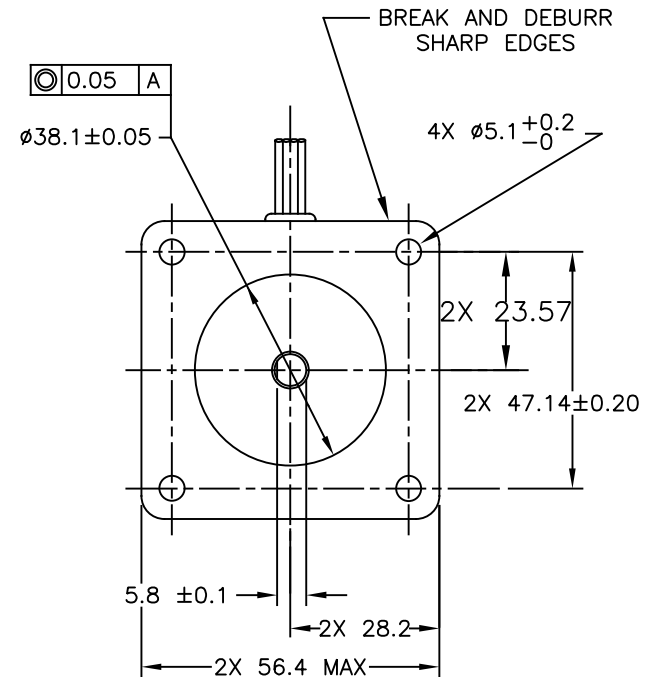
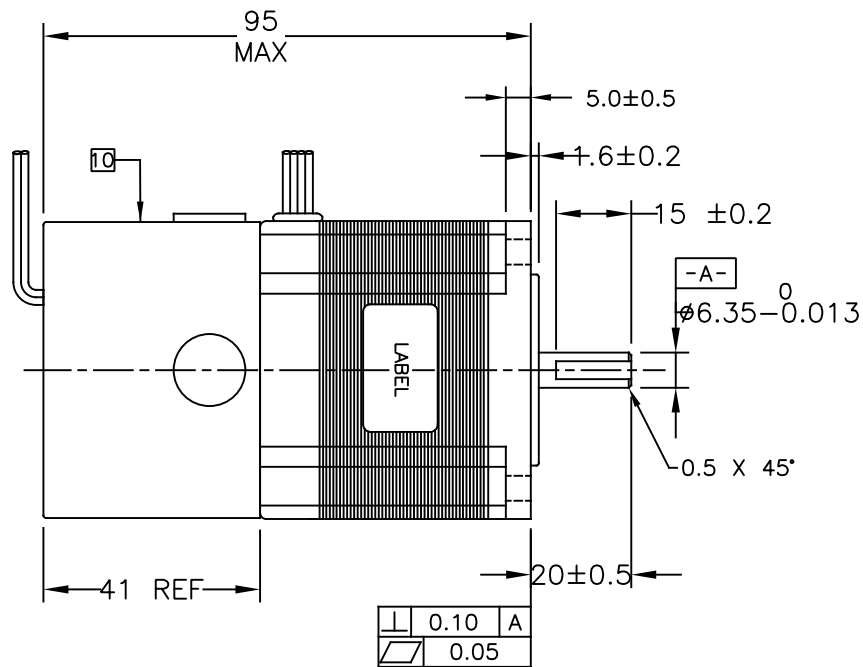
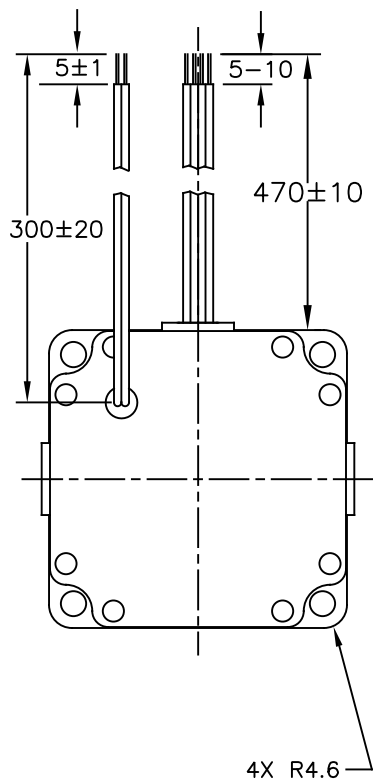
REVISIONS				
ECO NO.	REV	DESCRIPTION	DATE	APPROVED
7462	A	PRELIMINARY RELEASE	8/9/16	J.KORDIK
7852	B	REVISE MOTOR WEIGHT	3/1/18	J.KORDIK
-	-	-	-	-
-	-	-	-	-
-	-	-	-	-
-	-	-	-	-
-	-	-	-	-
-	-	-	-	-
-	-	-	-	-
-	-	-	-	-
-	-	-	-	-
-	-	-	-	-
-	-	-	-	-
-	-	-	-	-


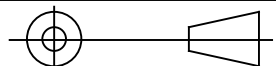


LABEL DETAIL
BOTH OPTIONS ACCEPTABLE



CONTRACT NO. -		APPLIED MOTION PRODUCTS, INC.		
APPROVALS	DATE	STEP MOTOR OUTLINE		
DRAWN K.KESLER	8/1/16			
CHECKED -	-			
APPROVED -	-			
APPROVED -	-	B	COMPUTER DATA BASE DRAWING	DWG NO. HT23-598B
SCALE: NONE		SHEET 1 OF 2		



TOLERANCES		THIRD ANGLE PROJECTION		 APPLIED MOTION PRODUCTS, INC.		
*ALL DIMENSIONS IN MM DECIMALS: MM X.XX = ±0.13 X.X = ±0.25 ANGLES: MACH. = ±0.5° CHAM. = ±5°				STEP MOTOR OUTLINE		
		APPROVALS	DATE			
		DRAWN K.KESLER	8/1/16	B	DWG NO. HT23-598B	REV B
		CHECKED —	—			
COMPUTER DATA BASE DRAWING	APPROVED —	—	SCALE: NONE		SHEET 2 OF 2	

Mouser Electronics

Authorized Distributor

Click to View Pricing, Inventory, Delivery & Lifecycle Information:

[Applied Motion:](#)

[HT23-598B](#)