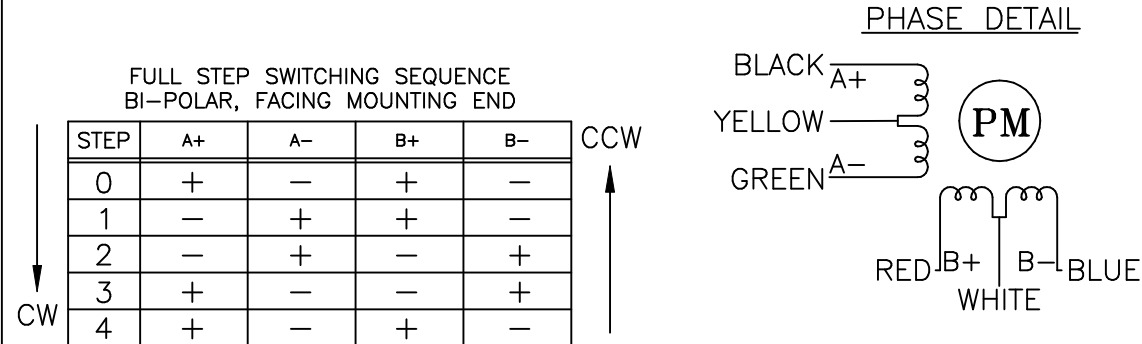


SPECIFICATIONS:					
NUMBER OF PHASES: 4			ROTOR INERTIA: 260 g-cm ² (1.42 oz-in ²) NOM		
STEPS PER REVOLUTION: 400			DETENT TORQUE: 48 mNm (6.80 oz-in) MIN		
STEP ANGLE: 0.9°			BEARINGS: 608ZZ		
STEP TO STEP ACCURACY: ±0.045°		[1], [2]	INSULATION CLASS: B		
POSITIONAL ACCURACY: ±5%		[1], [3]	HYSTERESIS: N/A%		
SHAFT RUNOUT: 0.03 mm T.I.R. MAX			TEMP. RISE: 80 °C MAX.		
RADIAL PLAY: 0.02 mm MAX (.5KG RADIAL LOAD)			OPERATING TEMP. RANGE: -20 TO +50 °C		
END PLAY: 0.08 mm MAX (.5KG AXIAL LOAD)			STORAGE TEMP. RANGE: -30 TO +70 °C		
MAXIMUM RADIAL LOAD: 71N (15.9lb)			RELATIVE HUMIDITY RANGE: 15 TO 85 %		
MAXIMUM AXIAL LOAD: 15N (3.37lb)			WEIGHT: 0.6 kg (1.32 lb)		
		[7]	[8]	[1]	[1]
SPECIFICATION	RESISTANCE PER PHASE (ohm ±10%)	INDUCTANCE PER PHASE (mH ±20%)	RATED CURRENT (amp)	HOLDING TORQUE (Nm MIN)	HOLDING TORQUE (oz-in Min)
UNI-POLAR	1.8	4.1	2.0	0.9	127.45
BI-POLAR SERIES	3.6	16.5	1.4	1.1	155.77

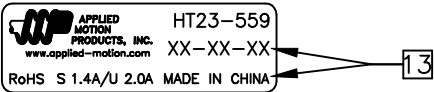
NOTES, UNLESS OTHERWISE SPECIFIED:

- [1] MEASUREMENTS MADE AT RATED CURRENT IN EACH PHASE.
- [2] BETWEEN ANY TWO ADJACENT FULL STEP POSITIONS.
- [3] MAXIMUM ERROR IN 360°.
4. HIPOT 500 VAC, 60 Hz FOR ONE MINUTE.
- [5] LEADS: 6, AWG 22, 7 STRAND MIN., UL AND CSA APPROVED, UL 3266
6. INSULATION RESISTANCE: 100 MEGOHMS MIN AT 500 VDC.
- [7] AS MEASURED ACROSS EACH PHASE.
- [8] AS MEASURED ACROSS EACH PHASE USING AN A.C. INDUCTANCE BRIDGE AT 1 KHz.
- [9] AS MEASURED BY THE CHANGE IN RESISTANCE METHOD, WITH RATED CURRENT APPLIED TO 2 PHASES; WITH MOTOR AT REST.
- [10] ADD "D" TO END OF PART NUMBER IF DOUBLE SHAFT IS REQUIRED. ENCODER HOLES INCLUDED WITH REAR SHAFT VERSION ONLY.
11. ROTOR & STATOR LAMINATED CONSTRUCTION.
12. THIS MOTOR IS MANUFACTURED IN COMPLIANCE WITH THE CURRENT EU RoHS DIRECTIVE.
- [13] MOTOR LABEL TO INCLUDE "ROHS" COMPLIANT, AMP P/N, 'MADE IN (COUNTRY OF ORIGIN)', AND DATE CODE.
14. HIGH TORQUE MOTOR DESIGN



REVISIONS				
ECO NO.	REV	DESCRIPTION	DATE	APPROVED
6947	A	PRELIMINARY RELEASE	4/11/14	D.MACLEOD
7048	B	ERROR CORRECTION	8/11/14	D.MACLEOD
7069	C	MANU. SPEC. CHANGES	9/30/14	D.MACLEOD
7445	D	REVISE NOTE 12	6/6/16	J KORDIK
7567	E	REVISE NOTE 5	1/5/17	J KORDIK
-	-	-	-	-
-	-	-	-	-
-	-	-	-	-
-	-	-	-	-
-	-	-	-	-
-	-	-	-	-
-	-	-	-	-

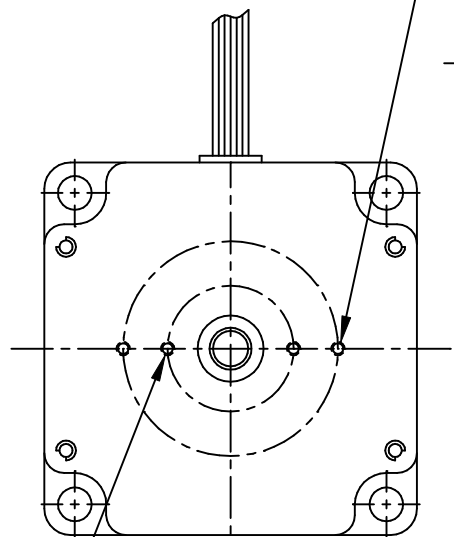
LABEL DETAIL



CONTRACT NO. —				
APPROVALS	DATE	<div style="text-align: center; font-size: 2em; font-weight: bold;">STEP MOTOR OUTLINE</div>		
DRAWN K.KESLER	9/23/14			
CHECKED —	—	B	COMPUTER DATA BASE DRAWING	DWG NO. HT23-559
APPROVED —	—		REV E	
APPROVED —	—	SCALE: NONE		SHEET 1 OF 2

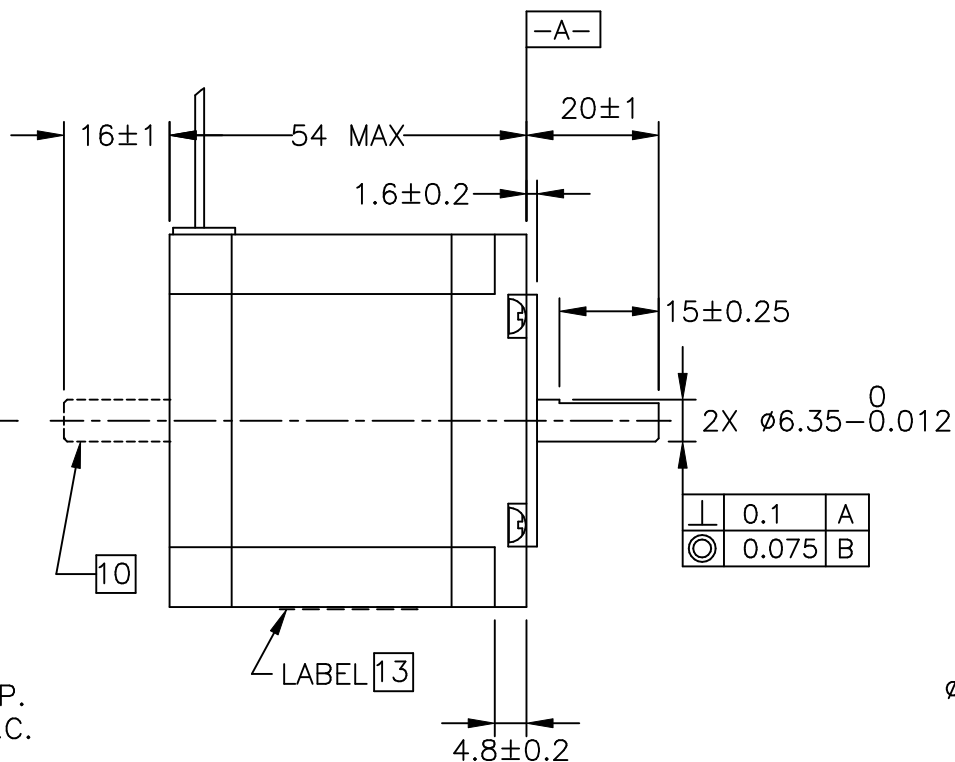
2X #2-56 UNC
TAP 2.5 MIN EQ.SP.
ON $\phi 32.5 \pm 0.1$ B.C.

10

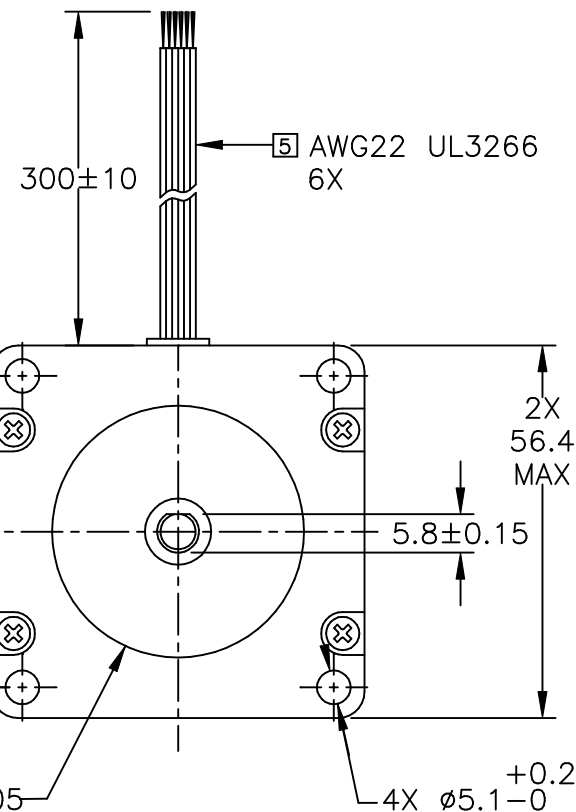



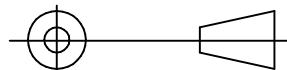
2X #2-56 UNC
TAP 2.5 MIN EQ.SP.
ON $\phi 19.05 \pm 0.1$ B.C.

10



\perp	0.1	A
\odot	0.075	B



TOLERANCES		THIRD ANGLE PROJECTION		 APPLIED MOTION PRODUCTS, INC.			
*ALL DIMENSIONS IN MM DECIMALS: MM X.XX = ±0.13 X.X = ±0.25 ANGLES: MACH. = ±0.5° CHAM. = ±5°							
COMPUTER DATA BASE DRAWING		APPROVALS	DATE	STEP MOTOR OUTLINE			
		DRAWN K.KESLER	9/23/14	B	DWG NO.	HT23-559	REV E
		CHECKED —	—				
		APPROVED —	—	SCALE: NONE		SHEET 2 OF 2	

Mouser Electronics

Authorized Distributor

Click to View Pricing, Inventory, Delivery & Lifecycle Information:

[Applied Motion:](#)

[HT23-559](#)